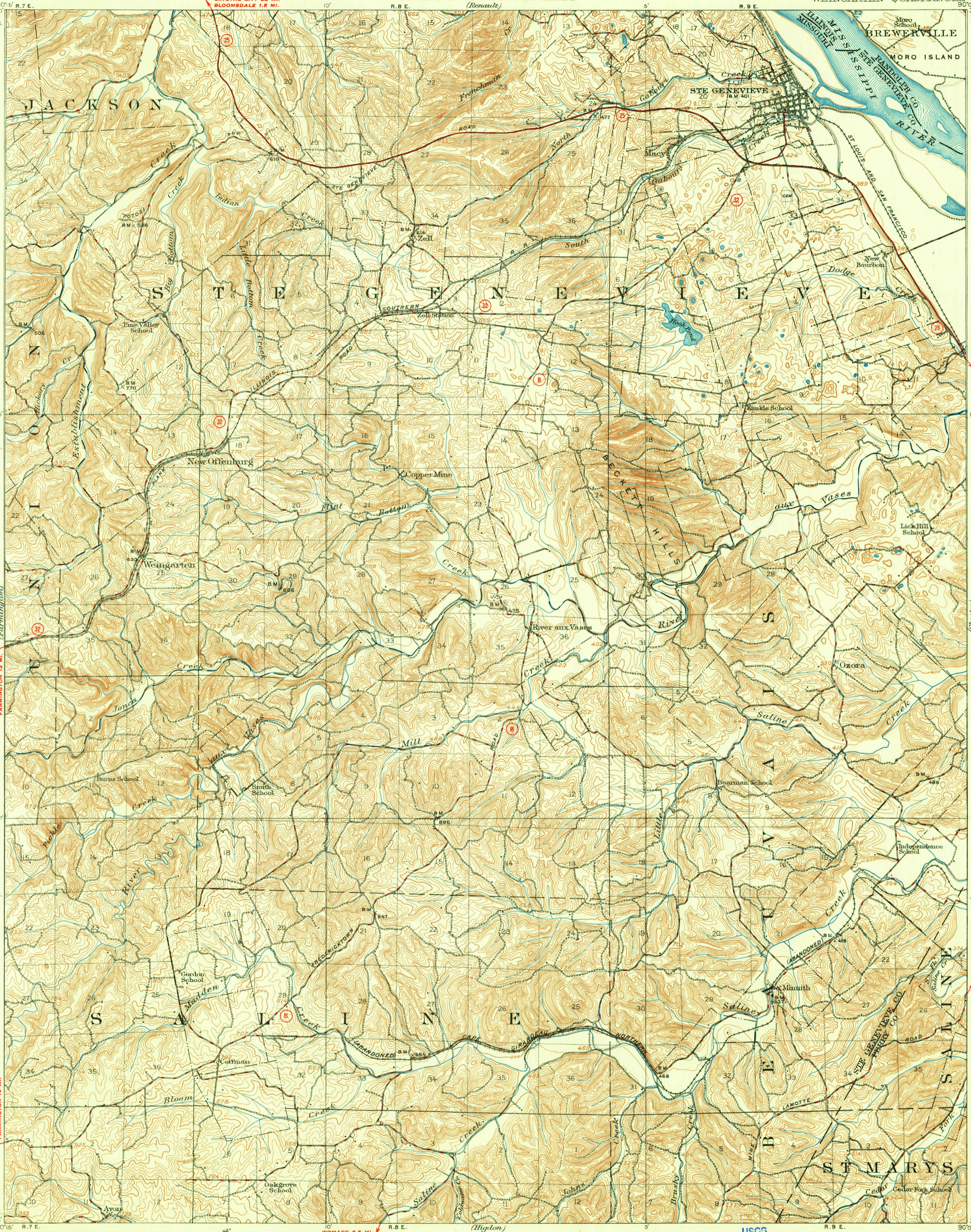
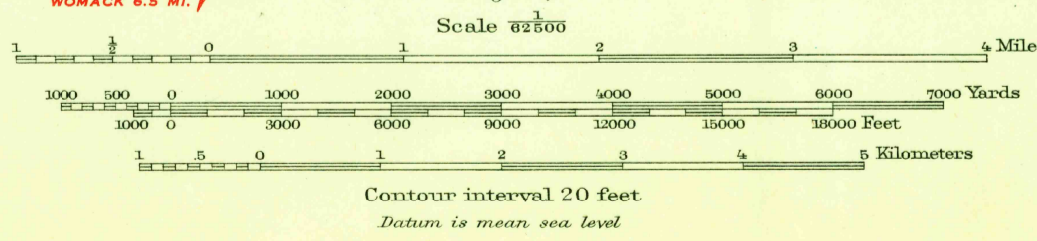


U.S.G.S.  
FILE COPY  
Inspection and Editing.



W. H. Herron, Geographer in charge.  
Topography by C. G. Anderson and J. A. Duck.  
Control by J. R. Ellis.  
Surveyed in 1907.  
Culture revised in part, 1949.  
SURVEYED IN COOPERATION WITH THE STATE OF MISSOURI.

**ROAD CLASSIFICATION**  
HEAVY-DUTY ALL WEATHER ROADS DRY WEATHER ROADS  
HEAVY-DUTY 2-LANE LANE Improved dirt  
MEDIUM-DUTY 2-LANE LANE Unimproved dirt  
Loose-surface, graded, or narrow hard-surface  
U. S. Route State Route



USGS  
Historical File  
Topographic Division

Edition of Apr. 1909, reprinted 1950  
Polyconic projection, North American datum

U.S.G.S.  
FILE COPY  
Inspection and Editing.

MO-ILL.  
WEINGARTEN  
N3745-W9000/15