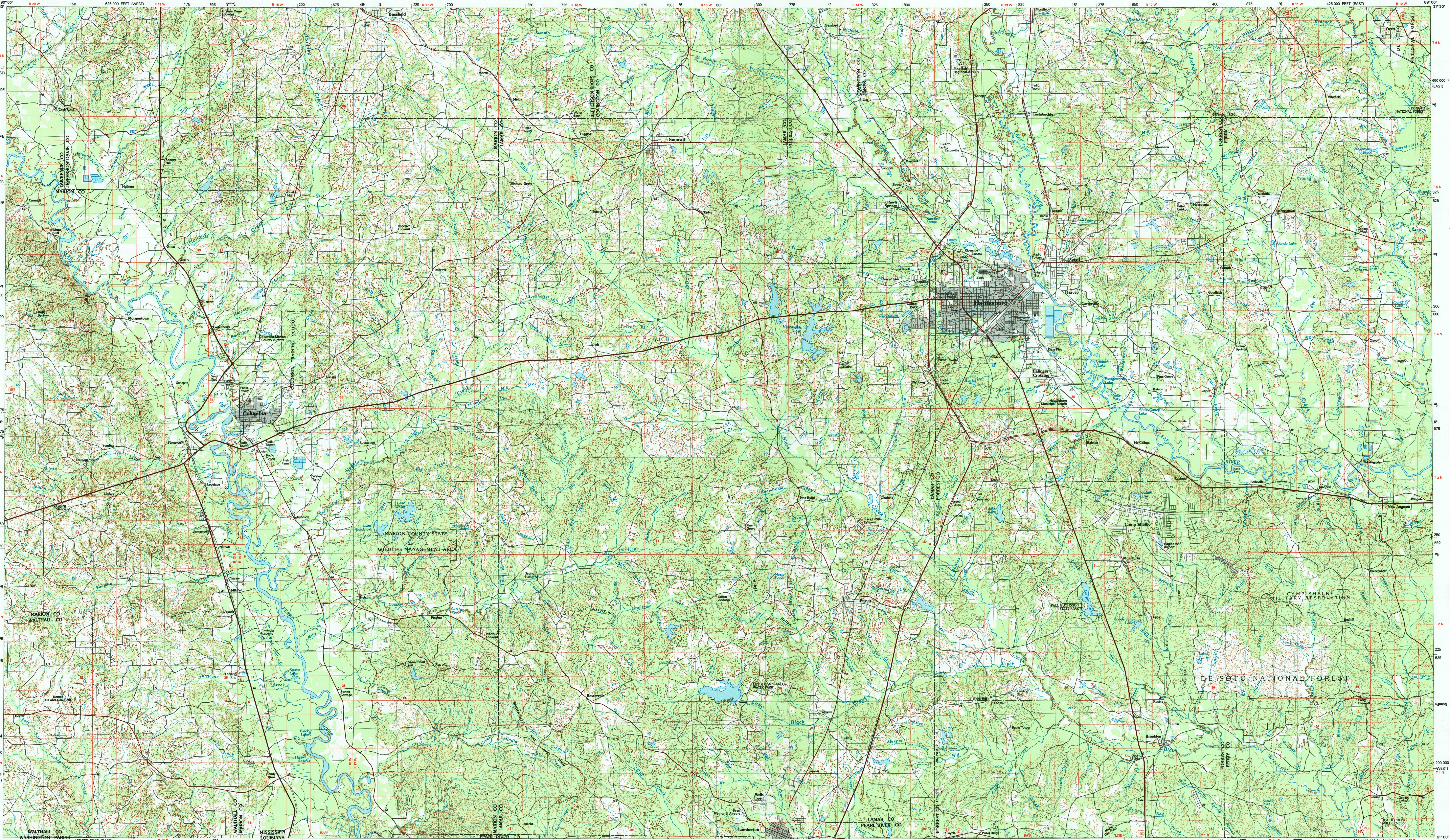


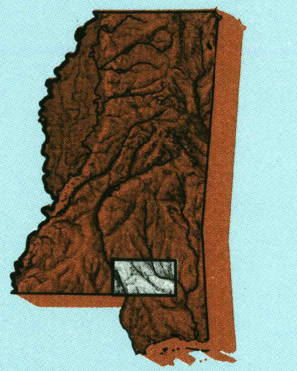
HATTIESBURG, MISSISSIPPI-LOUISIANA

30 X 60 MINUTE SERIES (TOPOGRAPHIC)

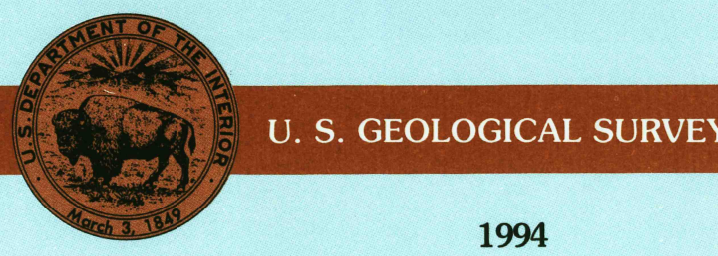


Hattiesburg MISSISSIPPI-LOUISIANA

1:100 000-scale metric topographic map



- 30 X 60 MINUTE QUADRANGLE SHOWING
- Contours and elevations in meters
  - Highways, roads and other manmade structures
  - Water features
  - Woodland areas
  - Geographic names



Produced by the United States Geological Survey  
 Compiled from USGS 1:24 000-scale topographic maps dated 1963-1983. Planimetry revised from aerial photographs taken 1991-92 and other source data. Revised information not field checked. Map edited 1994  
 North American Datum of 1927 (NAD 27). Projection and 10 000-meter grid: Universal Transverse Mercator, zone 16  
 25 000-foot ticks: Mississippi coordinate system, east and west zones  
 The values of the shift between NAD 27 and North American Datum of 1983 (NAD 83) for 7.5-minute intersections are obtainable from National Geodetic Survey NADCON software  
 There may be private inholdings within the boundaries of the National or State reservations shown on this map

CONTOUR INTERVAL 10 METERS  
NATIONAL GEODETIC VERTICAL DATUM OF 1929  
ELEVATIONS SHOWN TO THE NEAREST METER

THIS MAP COMPLIES WITH NATIONAL MAP ACCURACY STANDARDS

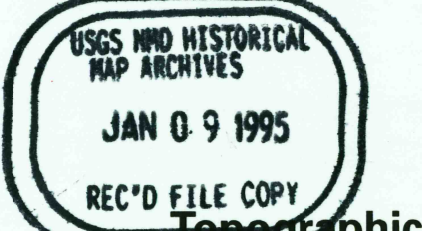
CONVERSION TABLE		DECLINATION DIAGRAM		ADJOINING MAPS		
Meters	Feet	GN	M	1	2	3
1	3.2808		23° 11' 11"	4	5	6
2	6.5617			1	2	3
3	9.8425			4	5	6
4	13.1234			7	8	
5	16.4042					
6	19.6850					
7	22.9659					
8	26.2467					
9	29.5276					
10	32.8084					

To convert meters to feet multiply by 3.2808  
 To convert feet to meters multiply by 0.3048

UTM grid convergences (GN and M) are indicated (M) Diagram is approximate

1 Brookhaven  
 2 Laurel  
 3 Waltham  
 4 McComb  
 5 Chenoweth  
 6 Amite  
 7 Bogalusa  
 8 Mobile

FOR SALE BY U. S. GEOLOGICAL SURVEY  
DENVER, COLORADO 80225, OR RESTON, VIRGINIA 22092



Topographic Map Symbols

- Primary highway, hard surface
- Secondary highway, hard surface
- Light duty road, principal street, hard or improved surface
- Other road or street, rail
- Route marker: Interstate, U.S., State
- Railroad: standard gage; narrow gage
- Bridge: overpass; underpass
- Tunnel: road; railroad
- Build-up area: locality, elevation
- Airport: landing field; landing strip
- National boundary
- State boundary
- County boundary
- Civil township boundary
- National or State reservation boundary
- Land grant boundary
- U.S. public lands survey: range, township, section
- Range, township, section line: protracted
- Power transmission line, pipeline
- Dam; dam with lock
- Cemetery, building
- Windmill; water well; spring
- Mine shaft; open cast; mine quarry; gravel pit
- Campground; picnic area; U.S. location monument
- Ruins; cliff dwelling
- Distorted surface: strip mine, lava; sand
- Contours: index; intermediate; supplementary
- Bathymetric contours: index; intermediate
- Stream, lake: perennial; intermittent
- Rapids, large and small; falls, large and small
- Area to be submerged: marsh, swamp
- Land subject to controlled inundation; woodland
- Straw mangrove
- Orchard; vineyard