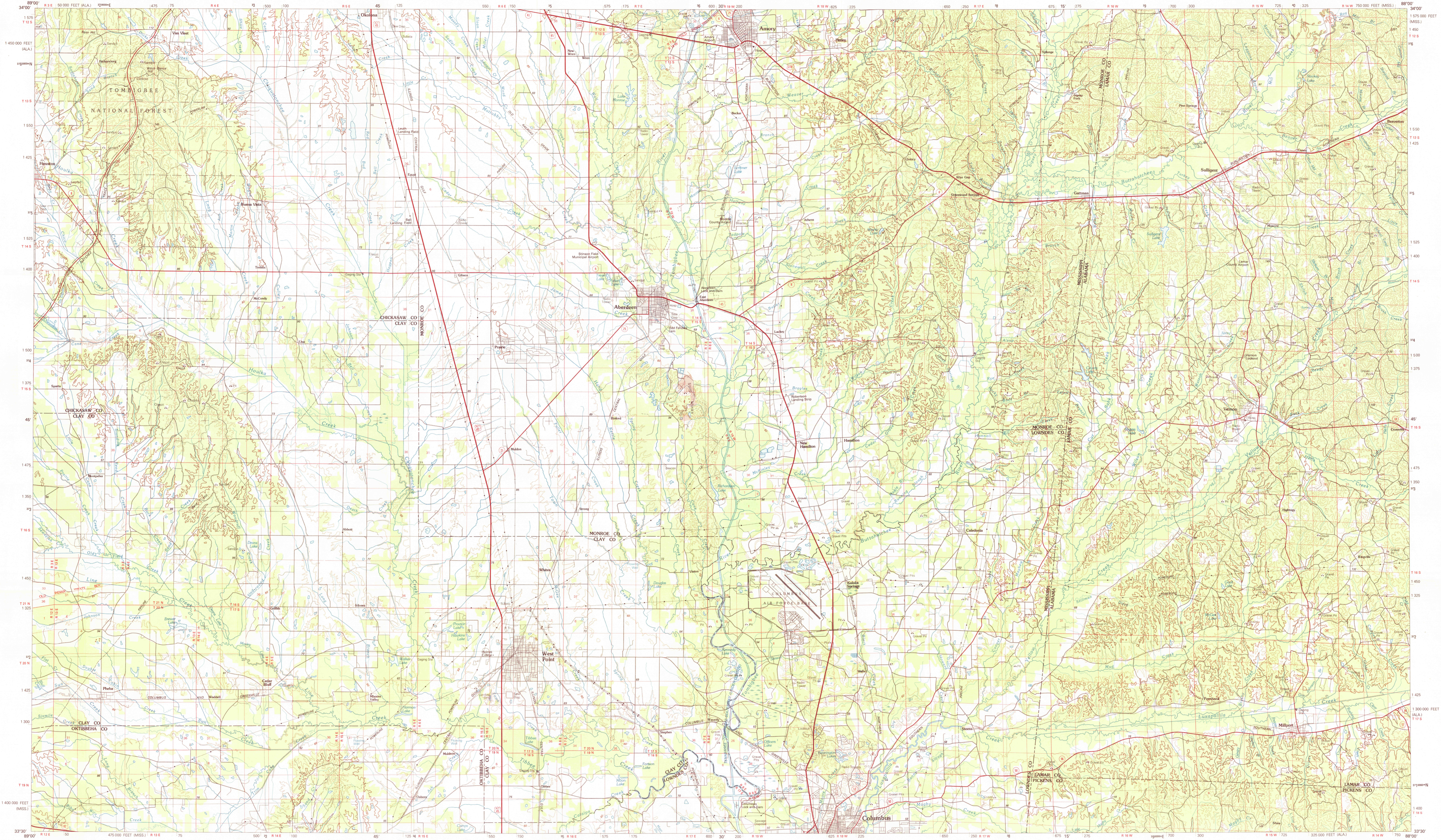


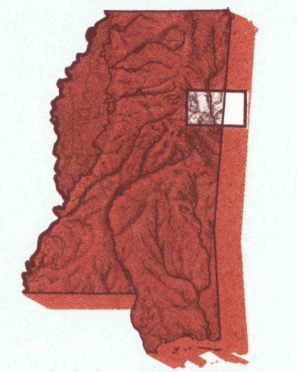
WEST POINT, MISSISSIPPI-ALABAMA

30 X 60 MINUTE SERIES (TOPOGRAPHIC)



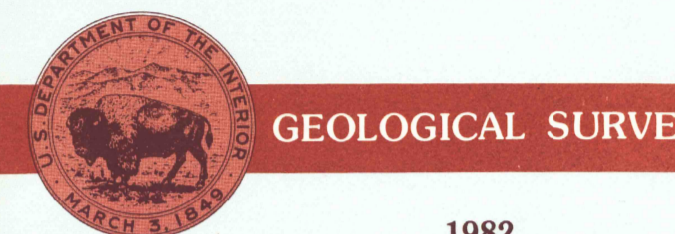
West Point MISSISSIPPI-ALABAMA

1:100 000-scale metric topographic map



30 X 60 MINUTE QUADRANGLE SHOWING

- Contours and elevations in meters
- Highways, roads and other manmade structures
- Water features
- Woodland areas
- Geographic names



1982

Produced by the United States Geological Survey  
 Compiled from USGS 1:24 000 and 1:62 500-scale topographic maps dated 1955-1967. Planimetry revised from aerial photographs taken 1979-80 and other source data. Revised information not field checked. Map edited 1982.  
 Universal Transverse Mercator  
 25 000-foot grid ticks based on Mississippi coordinate system, east zone and Alabama coordinate system, west zone 1927 North American Datum  
 To place on the predicted North American Datum 1983 move the projection lines 10 meters south and 3 meters east  
 There may be private subdivisions within the boundaries of the National or State reservations shown on this map

CONTOUR INTERVAL 20 METERS  
 NATIONAL GEODETIC VERTICAL DATUM OF 1929  
 ELEVATIONS SHOWN TO THE NEAREST METER

THIS MAP COMPLIES WITH NATIONAL MAP ACCURACY STANDARDS

CONVERSION TABLE	DECLINATION DIAGRAM	ADJOINING MAPS									
1 32808 2 63617 3 94425 4 125234 5 156042 6 186851 7 217659 8 248468 9 279276 10 310085		<table border="1"> <tr><td>1</td><td>2</td><td>3</td></tr> <tr><td>4</td><td>5</td><td>6</td></tr> <tr><td>7</td><td>8</td><td>9</td></tr> </table>	1	2	3	4	5	6	7	8	9
1	2	3									
4	5	6									
7	8	9									

To convert meters to feet multiply by 3.2808  
 To convert feet to meters multiply by 0.3048

UTM grid convergence (G90 and 1983 magnetic declination (MD) at center of map Diagram is approximate

1 3 Haloville  
 4 Jasper  
 5 Starkville  
 6 Tuscumbia

FOR SALE BY U.S. GEOLOGICAL SURVEY  
 RESTON, VIRGINIA 22092

Topographic Map Symbols

Primary highway, hard surface	
Secondary highway, hard surface	
Other road or street, hard or improved surface	
Light duty road, principal street, hard or improved surface	
Other road or street, trail	
Route marker, interstate, U.S. State	
Railroad: standard gage, narrow gage	
Bridge, covered, underpass	
Tunnel, road, railroad	
Built up area, locality, elevation	
Airport, landing field, landing strip	
National boundary	
State boundary	
County boundary	
National or State reservation boundary	
Land grant boundary	
U.S. public lands survey: range, township, section	
Range, township, section line, projected	
Power transmission line, pipeline	
Dam, dam with lock	
Cemetery, building	
Wooded, water well, spring	
Mine shaft, adit or cave, mine, quarry, gravel pit	
Campground, picnic area, U.S. location monument	
Ruin, cliff dwelling	
Disturbed surface: strip mine, lava, sand	
Contours: index, intermediate, supplementary	
Bathymetric contours: index, intermediate	
Stream, lake, perennial, intermittent	
Rapids, large and small; falls, large and small	
Area to be submerged, marsh, swamp	
Land subject to controlled erosion: woodland	
Soils: mangrove	
Orchard, vineyard	

A pamphlet describing topographic maps is available on request  
 RETURN TO:  
 USGS AND HISTORICAL MAP ARCHIVES