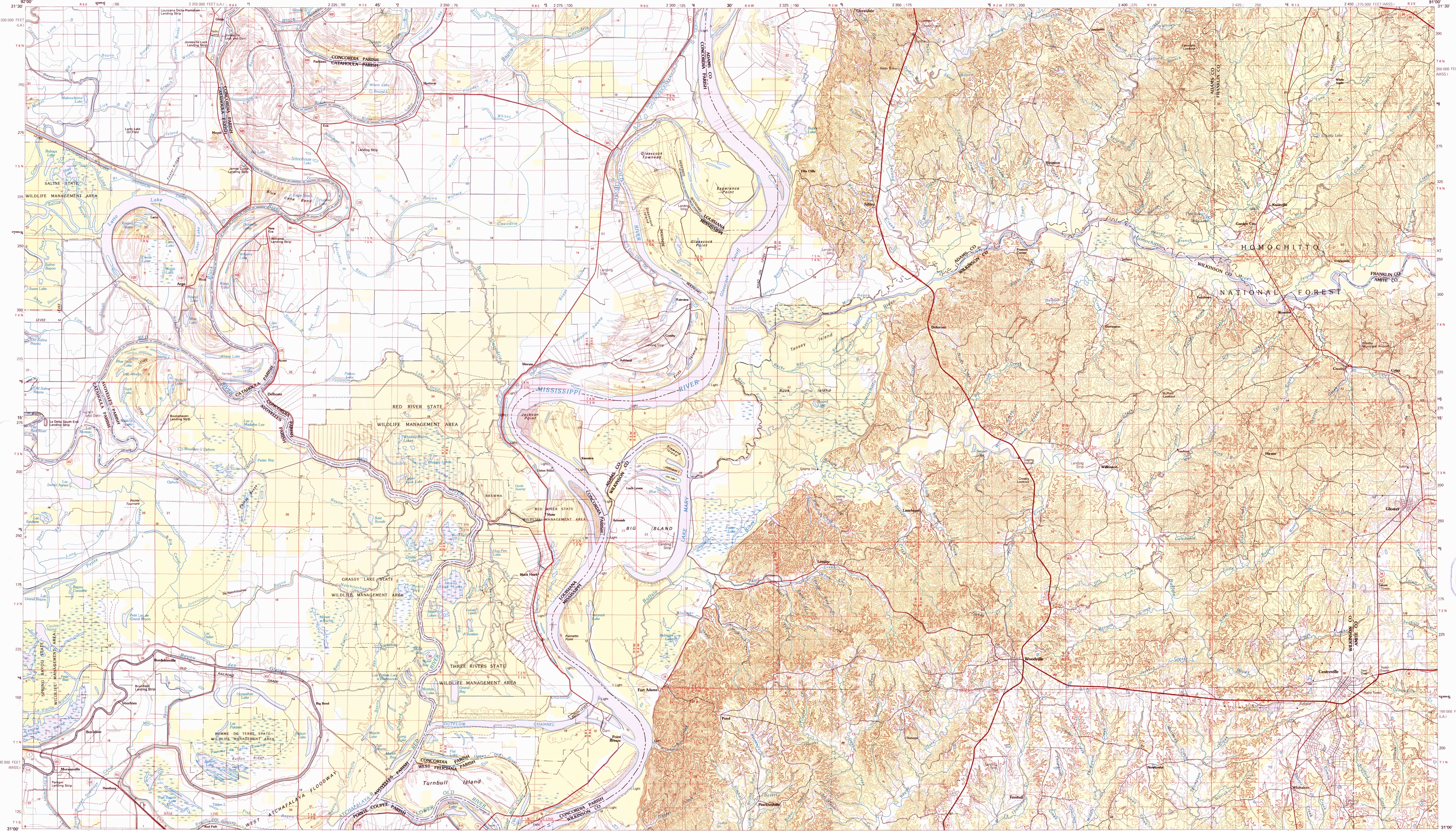


WOODVILLE, MISSISSIPPI-LOUISIANA

30 X 60 MINUTE SERIES (TOPOGRAPHIC)



Woodville
MISSISSIPPI-LOUISIANA

1:100 000-scale metric topographic map

30 X 60 MINUTE QUADRANGLE SHOWING

- Contours and elevations in meters
- Highways, roads and other manmade structures
- Water features
- Woodland areas
- Geographic names

GEOLOGICAL SURVEY

1991

Produced by the United States Geological Survey
Compiled from USGS 1:24 000 and 1:62 500-scale topographic maps dated 1958-1963. Plantations revised from aerial photographs taken 1985-1986 and other source data. Revised information not field checked. Map edited 1991.

Projection and 10 000-meter grid, zone 15, Universal Transverse Mercator
25 000-foot grid ticks based on Mississippi coordinate system, west zone and Louisiana coordinate system, north zone 1927 North American Datum
To place on the predicted North American Datum 1983, move the projection lines 15 meters south and 11 meters east
There may be private inholdings within the boundaries of the National or State reservations shown on this map

CONTOUR INTERVAL 5 AND 10 METERS
NATIONAL GEODETIC VERTICAL DATUM OF 1929
ELEVATIONS SHOWN TO THE NEAREST METER

CONTOUR INTERVAL

METERS	5	10
--------	---	----

THIS MAP COMPLIES WITH NATIONAL MAP ACCURACY STANDARDS

CONVERSION TABLE	DECLINATION DIAGRAM	ADJOINING MAPS
Meters	Feet	1 2 3
2	6.5617	4 5
4	13.1234	6 7 8
6	19.6851	
8	26.2468	
10	32.8085	

To convert meters to feet multiply by 3.2808
To convert feet to meters multiply by 0.3048

UTM grid convergence (E/W) and magnetic declination at center of map diagram is approximate

FOR SALE BY U.S. GEOLOGICAL SURVEY
DENVER, COLORADO 80225, OR RESTON, VIRGINIA 22092

NO. 505 HISTORICAL MAP ARCHIVES
FEB 9 5 1992
REC'D FILE COPY

Topographic Map Symbols

Primary highway, hard surface	Secondary highway, hard surface	Light duty road, principal street, hard or improved surface	Other road or street, trail	Route marker, interstate, U.S. State	Railroad, standard gage, narrow gage	Bridge, overpass, underpass	Tunnel, road, railroad	Built up area, locality, elevation	Airport, landing field, landing strip	National boundary	State boundary	County boundary	National or State reservation boundary	Land grant boundary	U.S. public lands survey, range, township, section	Range, township, section line, protected	Power transmission line, pipeline	Dam, dam with lock	Cemetery, building	Windmill, water well, spring	Mine shaft, sill or cave, mine, quarry, gravel pit	Campground, zone area, U.S. location monument	Ruin, cliff dwellings	Distorted surface, strip mine, lava, sand	Contours, index, intermediate, supplementary	Bathymetric contours, index, intermediate	Stream, lake, perennial, intermittent	Rapids, large and small; falls, large and small	Area to be submerged, marsh, swamp	Land subject to controlled inundation; woodland	Sand, mangrove	Other, viewshed
-------------------------------	---------------------------------	---	-----------------------------	--------------------------------------	--------------------------------------	-----------------------------	------------------------	------------------------------------	---------------------------------------	-------------------	----------------	-----------------	--	---------------------	--	--	-----------------------------------	--------------------	--------------------	------------------------------	--	---	-----------------------	---	--	---	---------------------------------------	---	------------------------------------	---	----------------	-----------------

A pamphlet describing topographic maps is available on request