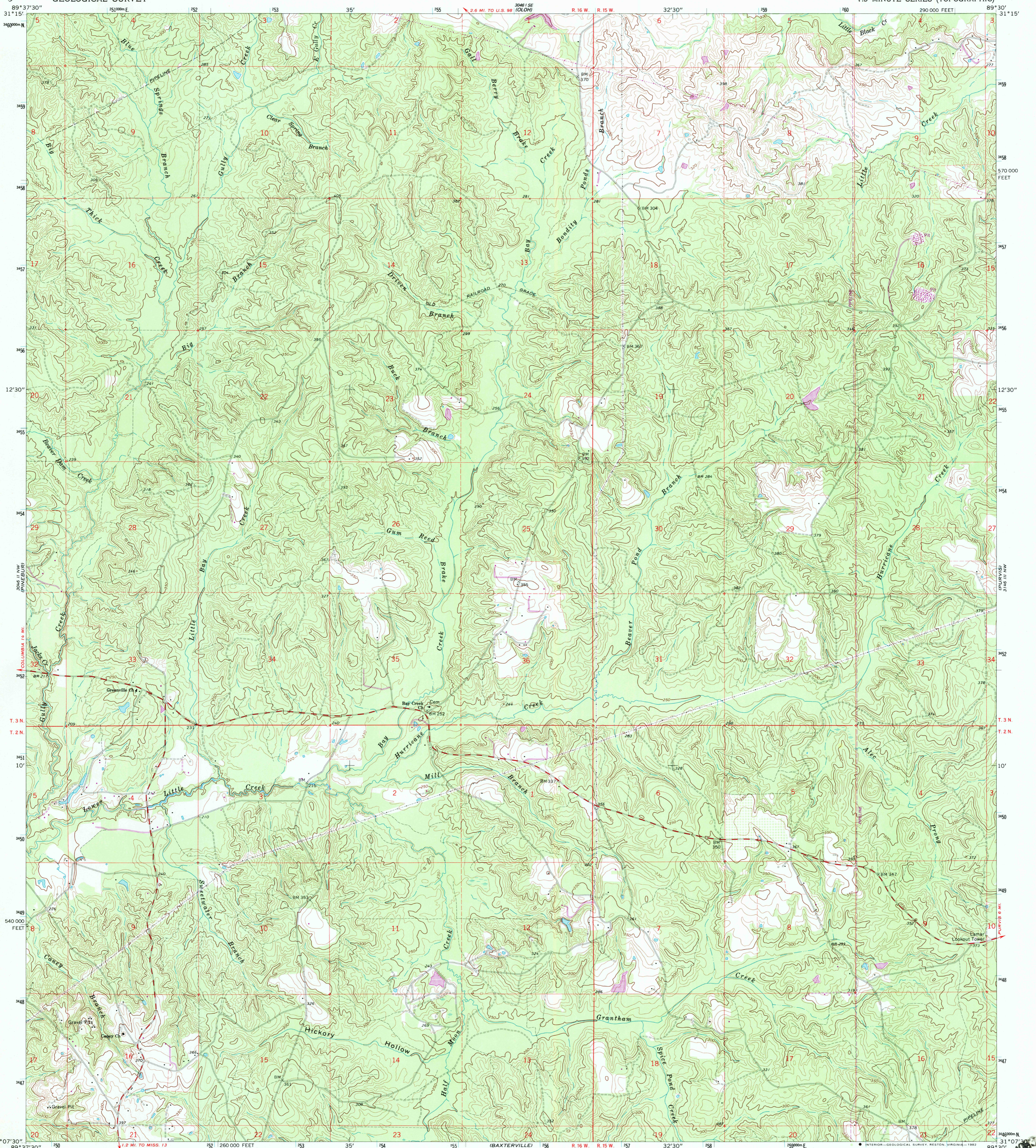
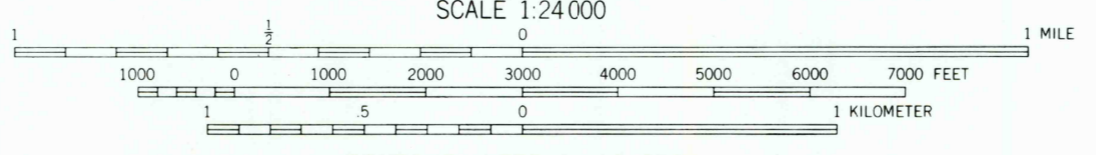
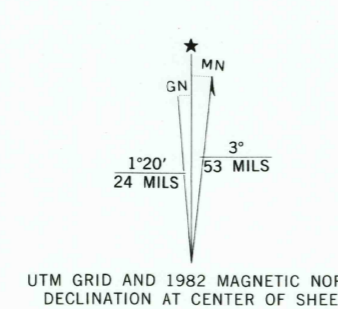


UNITED STATES  
DEPARTMENT OF THE INTERIOR  
GEOLOGICAL SURVEY

BAXTERVILLE NE QUADRANGLE  
MISSISSIPPI—LAMAR CO.  
7.5 MINUTE SERIES (TOPOGRAPHIC)



Mapped, edited, and published by the Geological Survey  
Control by USGS and USC&GS  
Topography by photogrammetric methods from aerial photographs taken 1967. Field checked 1969  
Polyconic projection. 1927 North American datum  
10,000-foot grid based on Mississippi coordinate system, east zone  
1000-meter Universal Transverse Mercator grid ticks, zone 16, shown in blue  
Fine red dashed lines indicate selected fence and field lines where generally visible on aerial photographs. This information is unchecked  
To place on the predicted North American Datum 1983 move the projection lines 16 meters south and 6 meters east as shown by dashed corner ticks  
Revisions shown in purple compiled from aerial photographs taken 1980 and other sources. This information not field checked. Map edited 1982



CONTOUR INTERVAL 10 FEET  
NATIONAL GEODETIC VERTICAL DATUM OF 1929



ROAD CLASSIFICATION

Secondary highway, all weather	Light-duty road, all weather
hard surface	improved surface
	Unimproved road, fair or dry weather

THIS MAP COMPLIES WITH NATIONAL MAP ACCURACY STANDARDS  
FOR SALE BY U. S. GEOLOGICAL SURVEY, RESTON, VIRGINIA 22092  
A FOLDER DESCRIBING TOPOGRAPHIC MAPS AND SYMBOLS IS AVAILABLE ON REQUEST

BAXTERVILLE NE, MISS.  
N3107.5—W8930/7.5  
1969  
PHOTOREVISED 1982  
DMA 3046 II NE—SERIES V843

MAR 21 1982  
LIBRARY