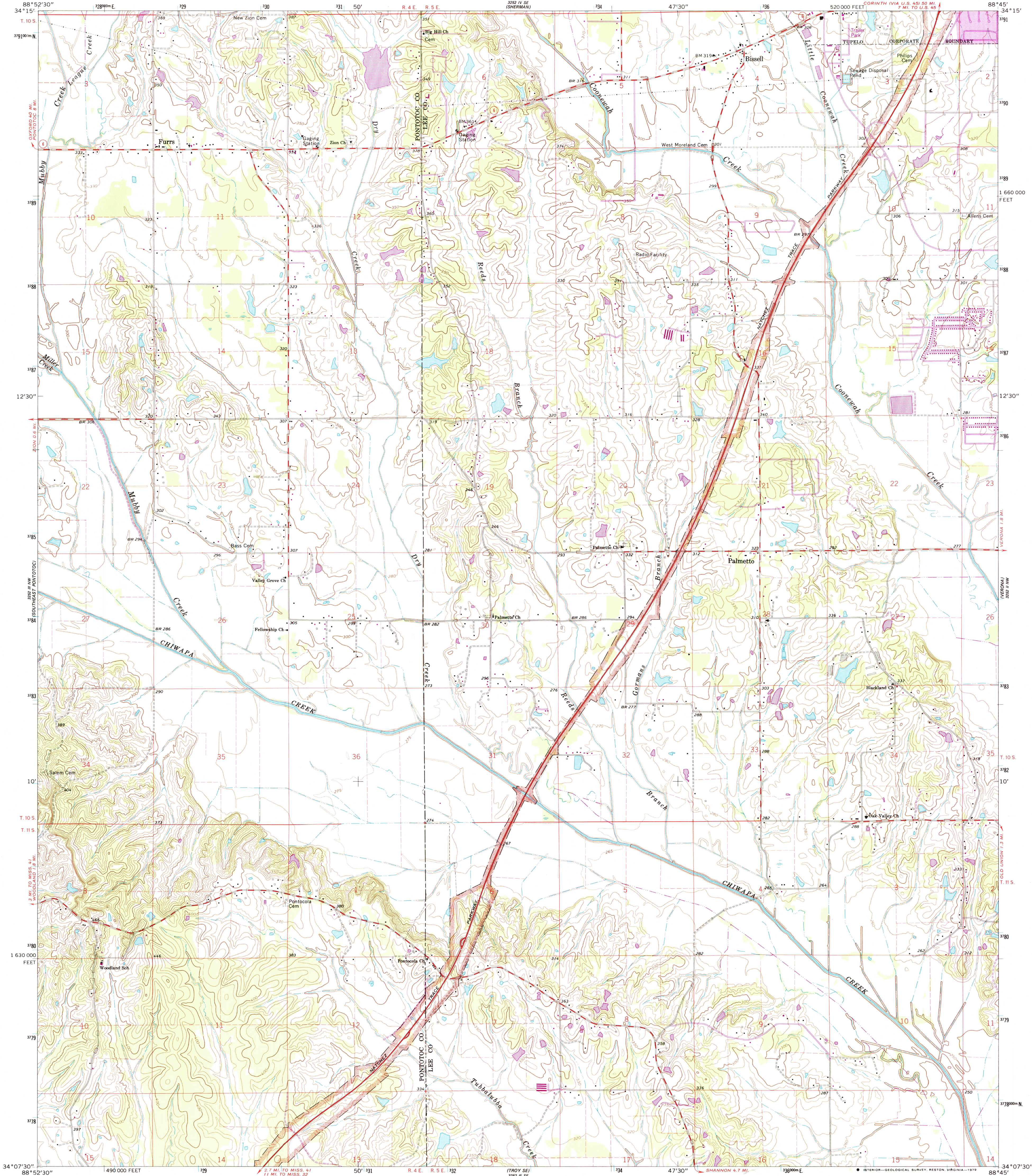


UNITED STATES  
DEPARTMENT OF THE INTERIOR  
GEOLOGICAL SURVEY

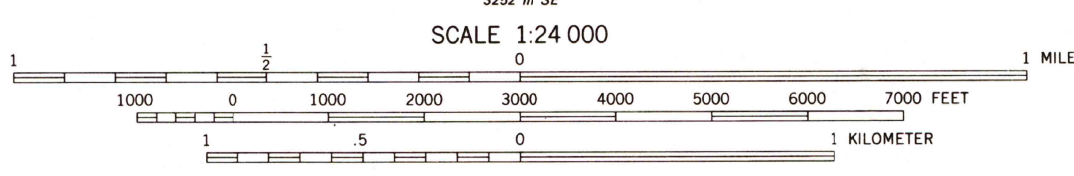
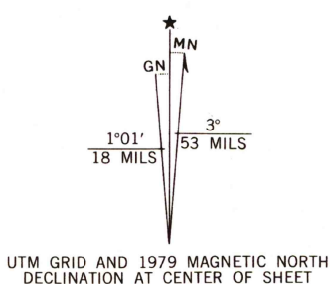
BISELL QUADRANGLE  
MISSISSIPPI  
7.5 MINUTE SERIES (TOPOGRAPHIC)



Mapped, edited, and published by the Geological Survey  
Control by USGS and USC&GS

Topography by photogrammetric methods from aerial  
photographs taken 1960 and planetable surveys 1966  
Polyconic projection. 1927 North American datum  
10,000-foot grid based on Mississippi coordinate system, east zone  
To place on the predicted North American Datum 1983  
move the projection lines 9 meters south and  
4 meters east as shown by dashed corner ticks  
1000-meter Universal Transverse Mercator grid ticks,  
zone 16, shown in blue

There may be private inholdings within the boundaries of  
the National or State reservations shown on this map  
Fine red dashed lines indicate selected fence and field lines where  
generally visible on aerial photographs. This information is unchecked



THIS MAP COMPLIES WITH NATIONAL MAP ACCURACY STANDARDS  
FOR SALE BY U. S. GEOLOGICAL SURVEY, RESTON, VIRGINIA 22092  
A FOLDER DESCRIBING TOPOGRAPHIC MAPS AND SYMBOLS IS AVAILABLE ON REQUEST

ROAD CLASSIFICATION

- Heavy-duty
- Medium-duty
- Unimproved dirt
- Light-duty
- State Route

QUADRANGLE LOCATION

MISS

Revisions shown in purple compiled from aerial  
photographs taken 1977. Map edited 1979  
This information not field checked  
Purple tint indicates extension of urban area

BISELL, MISS.  
N3407.5—W8845/7.5

1966  
PHOTOREVISED 1979  
DMA 3252 III NE—SERIES V843