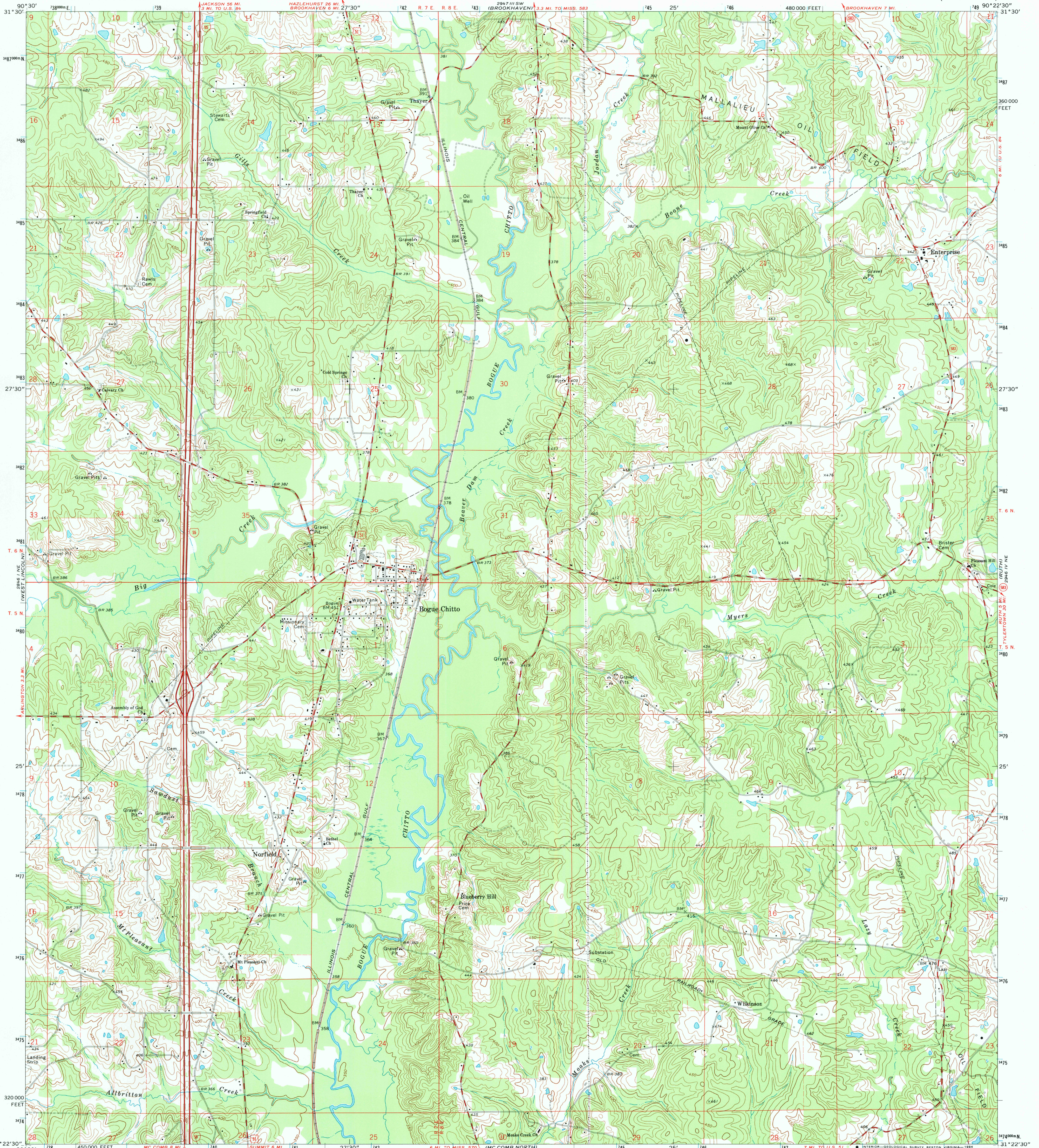


28° 11' 56" N
122° 11' 05" W

UNITED STATES
DEPARTMENT OF THE INTERIOR
GEOLOGICAL SURVEY

BOGUE CHITTO QUADRANGLE
MISSISSIPPI—LINCOLN CO.
7.5 MINUTE SERIES (TOPOGRAPHIC)

29° 11' 56" N
122° 11' 05" W



28° 11' 56" N
122° 11' 05" W

Mapped, edited, and published by the Geological Survey

Control by USGS and USC&GS

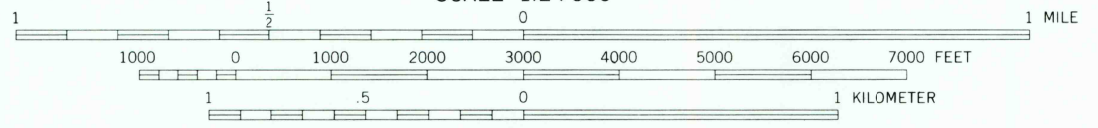
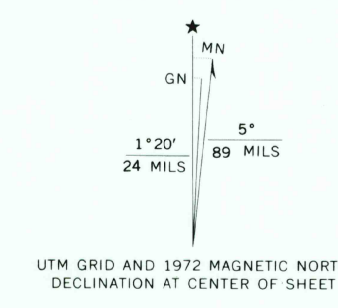
Topography by photogrammetric methods from aerial photographs taken 1971. Field checked 1972

Projection and 10,000-foot grid ticks: Mississippi coordinate system, west zone (transverse Mercator)

1000-meter Universal Transverse Mercator grid ticks, zone 15, shown in blue. 1927 North American datum

To place on the predicted North American Datum 1983, move the projection lines 15 meters south and 8 meters east as shown by dashed corner ticks

Fine red dashed lines indicate selected fence and field lines where generally visible on aerial photographs. This information is unchecked



CONTOUR INTERVAL 10 FEET
NATIONAL GEODETIC VERTICAL DATUM OF 1929



ROAD CLASSIFICATION

Primary highway, hard surface	Light-duty road, hard surface
Secondary highway, hard surface	Unimproved road
Interstate Route	U. S. Route
	State Route

THIS MAP COMPLIES WITH NATIONAL MAP ACCURACY STANDARDS FOR SALE BY U. S. GEOLOGICAL SURVEY, RESTON, VIRGINIA 22092. A FOLDER DESCRIBING TOPOGRAPHIC MAPS AND SYMBOLS IS AVAILABLE ON REQUEST

RETURN TO:
USGS NMD HISTORICAL MAP ARCHIVES

BOGUE CHITTO, MISS.
N3122.5—W9022.5/7.5

1972
AMS 2946 IV NW—SERIES V843