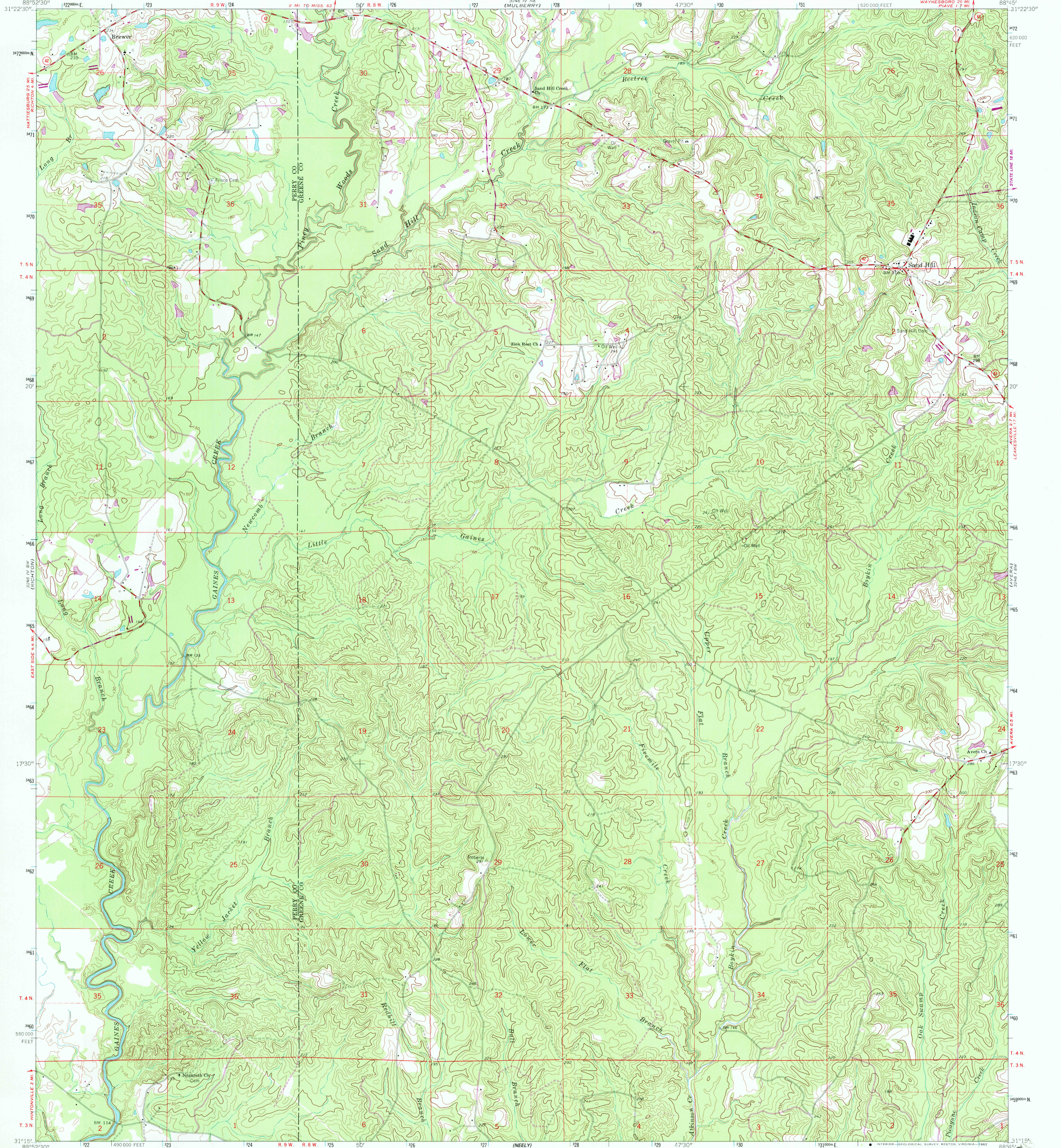


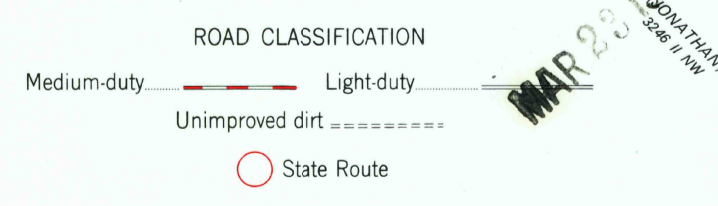
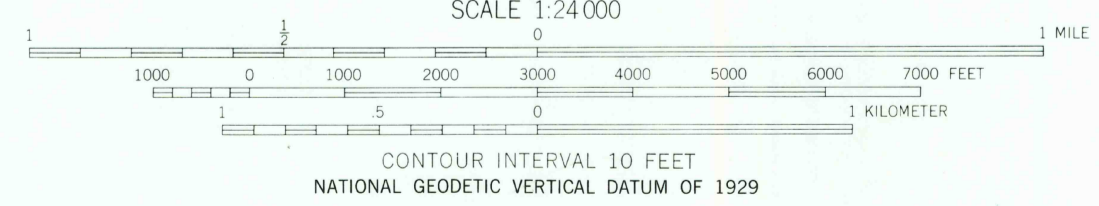
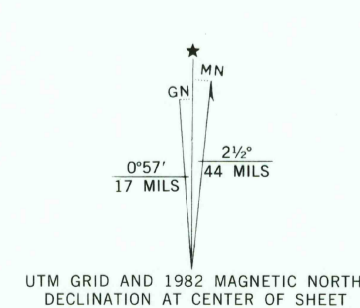
3246 IV NW (RICHTON) 3246 IV SW (RICHTON) 3246 IV NE (MULBERRY) 3246 IV SE (MULBERRY) 3246 V NW (RICHTON) 3246 V SW (RICHTON) 3246 V NE (MULBERRY) 3246 V SE (MULBERRY)

UNITED STATES
DEPARTMENT OF THE INTERIOR
GEOLOGICAL SURVEY

BREWER QUADRANGLE
MISSISSIPPI
7.5 MINUTE SERIES (TOPOGRAPHIC)



Mapped, edited, and published by the Geological Survey
Control by USGS and USC&GS
Topography by photogrammetric methods from aerial photographs taken 1960. Field checked 1963
Polyconic projection. 1927 North American datum
10,000-foot grid based on Mississippi coordinate system, east zone
1000-meter Universal Transverse Mercator grid ticks, zone 16, shown in blue
Fine red dashed lines indicate selected fence and field lines where generally visible on aerial photographs. This information is unchecked
To place on the predicted North American Datum 1983
move the projection lines 16 meters south and 4 meters east as shown by dashed corner ticks
Revisions shown in purple compiled from aerial photographs taken 1980 and other sources. This information not field checked. Map edited 1982



THIS MAP COMPLIES WITH NATIONAL MAP ACCURACY STANDARDS
FOR SALE BY U. S. GEOLOGICAL SURVEY, RESTON, VIRGINIA 22092
A FOLDER DESCRIBING TOPOGRAPHIC MAPS AND SYMBOLS IS AVAILABLE ON REQUEST

RETURN TO:
USGS M&D HISTORICAL MAP ARCHIVES

BREWER, MISS.
N3115-W8845/7.5
1963
PHOTOREVISED 1982
DMA 3246 IV SE-SERIES V843