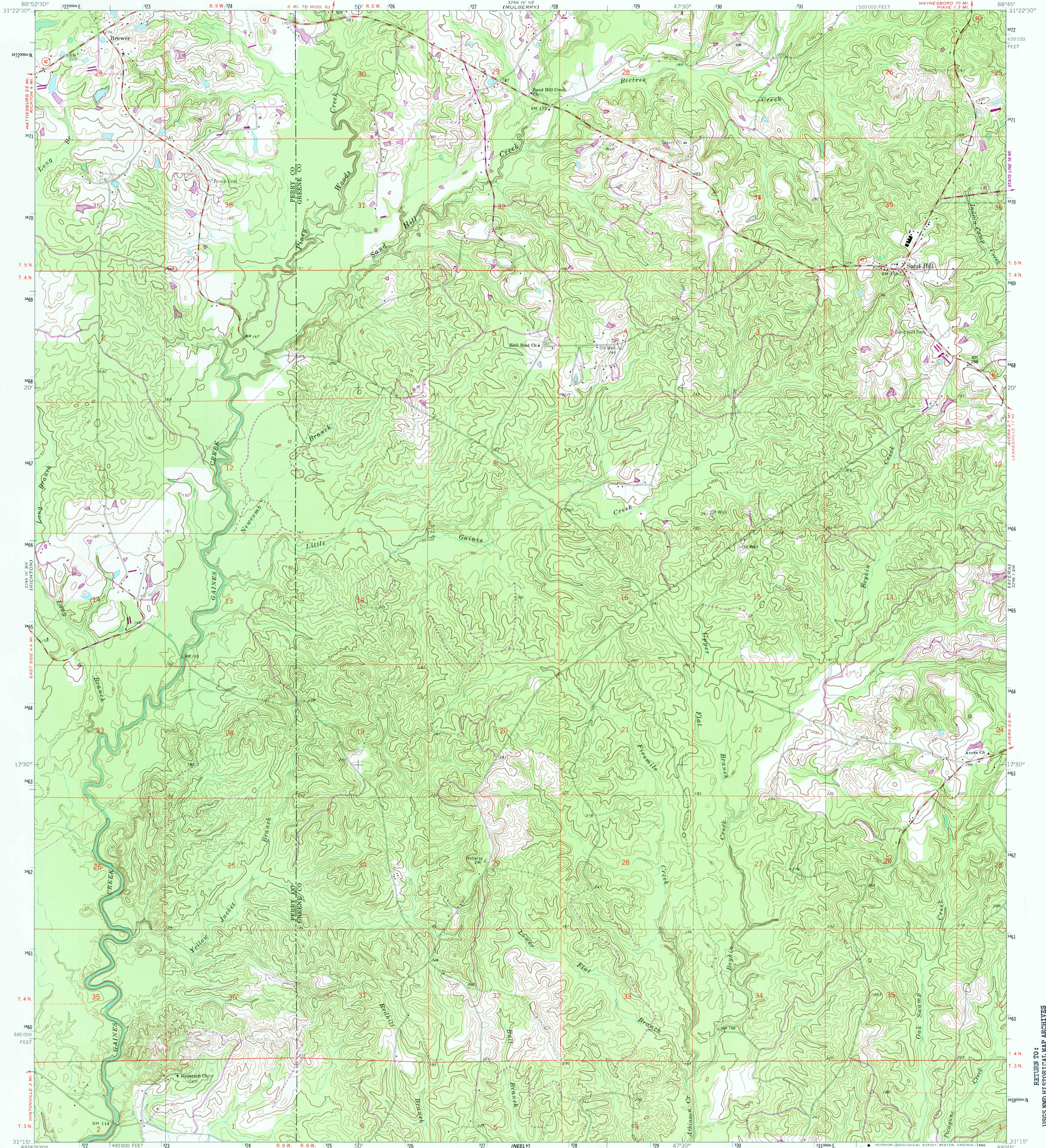


328 1/4 NW (P&A) 25

UNITED STATES  
DEPARTMENT OF THE INTERIOR  
GEOLOGICAL SURVEY

BREWER QUADRANGLE  
MISSISSIPPI  
7.5 MINUTE SERIES (TOPOGRAPHIC)

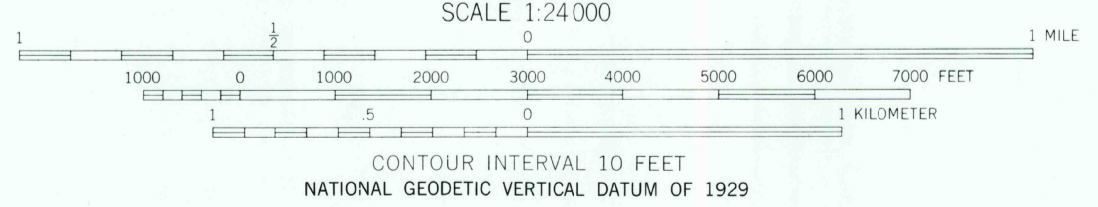
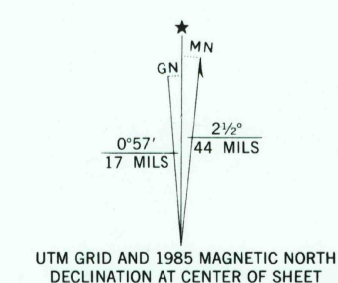
328 1/4 NW (P&A) 25



Mapped, edited, and published by the Geological Survey  
Control by USGS and USC&GS

Topography by photogrammetric methods from aerial  
photographs taken 1960. Field checked 1963  
Polyconic projection. 1927 North American datum  
10,000-foot grid based on Mississippi coordinate system, east zone  
1000-meter Universal Transverse Mercator grid ticks,  
zone 16, shown in blue  
Fine red dashed lines indicate selected fence and field lines where  
generally visible on aerial photographs. This information is unchecked

To place on the predicted North American Datum 1983  
move the projection lines 16 meters south and  
4 meters east as shown by dashed corner ticks  
Revisions shown in purple and woodland compiled  
from aerial photographs taken 1981 and other sources  
This information not field checked. Map edited 1985



THIS MAP COMPLIES WITH NATIONAL MAP ACCURACY STANDARDS  
FOR SALE BY U. S. GEOLOGICAL SURVEY, RESTON, VIRGINIA 22092  
A FOLDER DESCRIBING TOPOGRAPHIC MAPS AND SYMBOLS IS AVAILABLE ON REQUEST

BREWER, MISS.  
31088-C7-TF-024

1963  
PHOTOREVISED 1985  
DMA 3246 IV SE—SERIES V843

RETURN TO:  
USGS AND HISTORICAL MAP ARCHIVES