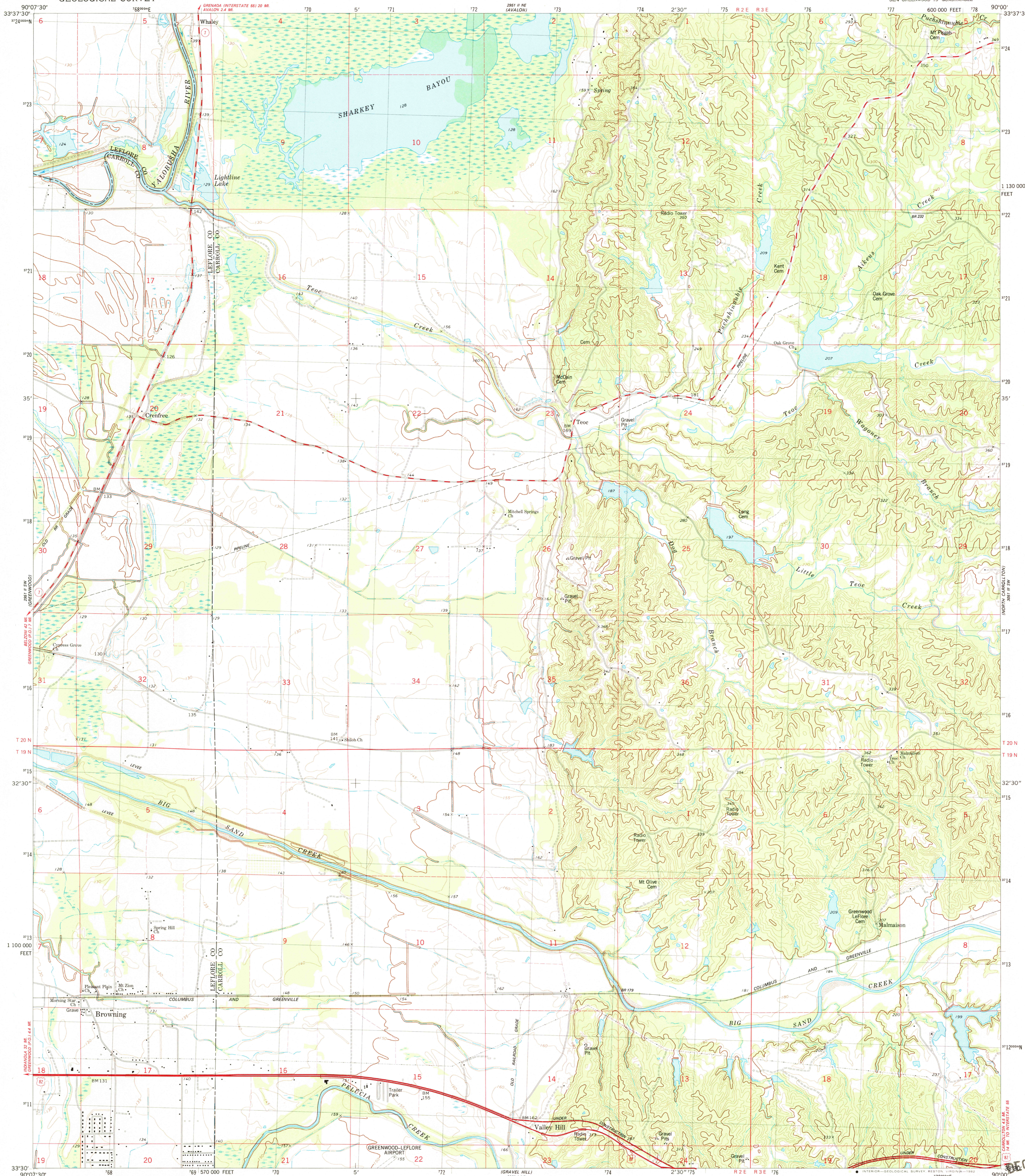
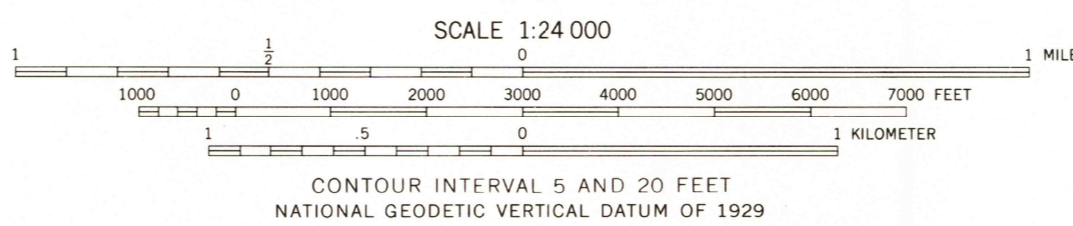
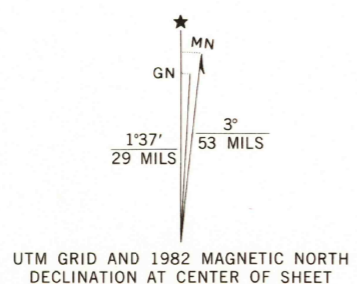


UNITED STATES
DEPARTMENT OF THE INTERIOR
GEOLOGICAL SURVEY

BROWNING QUADRANGLE
MISSISSIPPI
7.5 MINUTE SERIES (TOPOGRAPHIC)



Mapped, edited, and published by the Geological Survey
Control by USGS, NOS/NOAA, and Mississippi Highway Department
Topography by photogrammetric methods from aerial photographs
taken 1976. Field checked 1977. Map edited 1982
Projection and 10,000-foot grid ticks: Mississippi coordinate
system, west zone (transverse Mercator)
1,000-meter Universal Transverse Mercator grid, zone 15
1927 North American Datum
To place on the predicted North American Datum 1983
move the projection lines 10 meters south and
8 meters east as shown by dashed corner ticks
Fine red dashed lines indicate selected fence and field lines where
generally visible on aerial photographs. This information is unchecked



ROAD CLASSIFICATION

Primary highway, hard surface	Light-duty road, hard or improved surface
Secondary highway, hard surface	Unimproved road
Interstate Route	U. S. Route
	State Route

BROWNING, MISS.
SE/4 GREENWOOD 15' QUADRANGLE
N3330-W9000/7.5

RETURN TO:
USGS NMD HISTORICAL MAP ARCHIVES

1982
DMA 2951 II SE-SERIES V843

DEC 13 1982