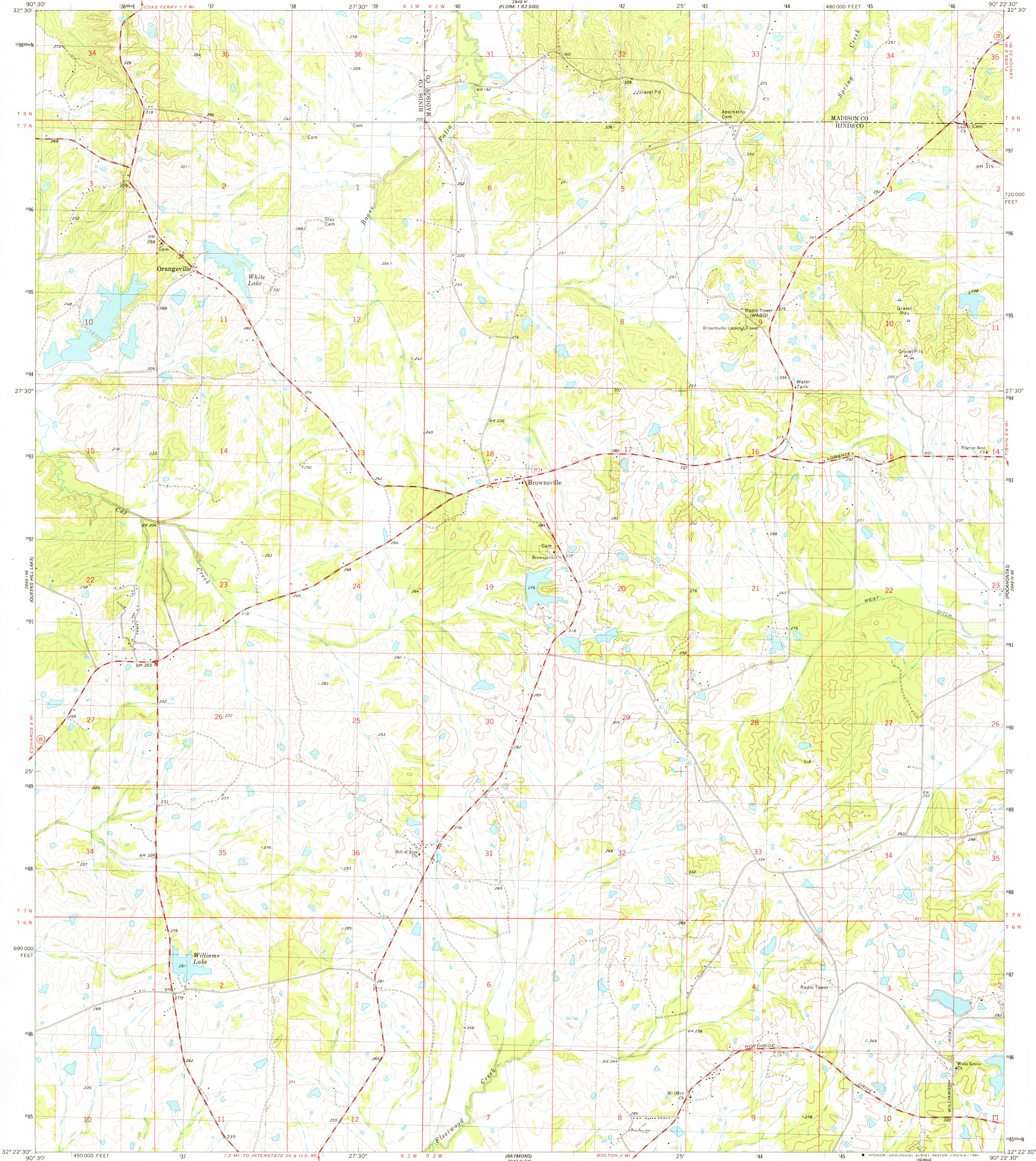


2949 III  
(FLORA 1:62 500)  
(MEC 1:62 500)

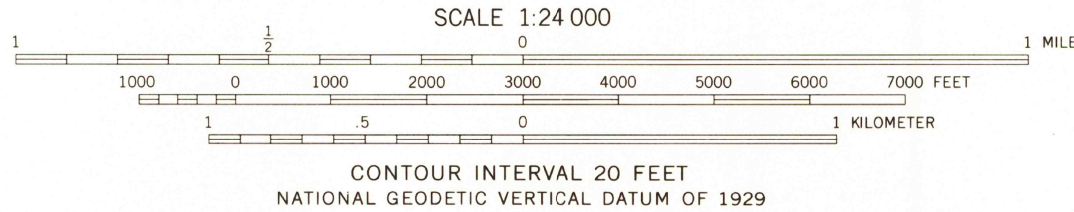
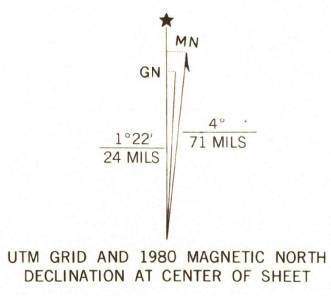
UNITED STATES  
DEPARTMENT OF THE INTERIOR  
GEOLOGICAL SURVEY

BROWNSVILLE QUADRANGLE  
MISSISSIPPI  
7.5 MINUTE SERIES (TOPOGRAPHIC)

2949 III  
(FLORA 1:62 500)



Maped, edited, and published by the Geological Survey  
Control by USGS and NOS/NOAA  
Topography by photogrammetric methods from aerial photographs  
taken 1968. Field checked 1971.  
Revision primarily limited to detail visible on high-altitude photographs  
taken 1977. Field checked 1979. Map edited 1980  
Projection and 10,000-foot grid ticks: Mississippi coordinate  
system, west zone (transverse Mercator)  
1000-meter Universal Transverse Mercator grid, zone 15  
1927 North American Datum  
To place on the predicted North American Datum 1983  
move the projection lines 13 meters south and  
9 meters east as shown by dashed corner ticks  
Fine red dashed lines indicate selected fence and field lines where  
generally visible on aerial photographs. This information is unchecked



THIS MAP COMPLIES WITH NATIONAL MAP ACCURACY STANDARDS  
FOR SALE BY U.S. GEOLOGICAL SURVEY, RESTON, VIRGINIA 22092  
A FOLDER DESCRIBING TOPOGRAPHIC MAPS AND SYMBOLS IS AVAILABLE ON REQUEST



USGS  
Historical File  
Topographic Division

BROWNSVILLE, MISS.  
N3222.5-W9022.5/7.5  
1980

DNA 2948 IV NW-SERIES V843

JUL - 2 1980

1250