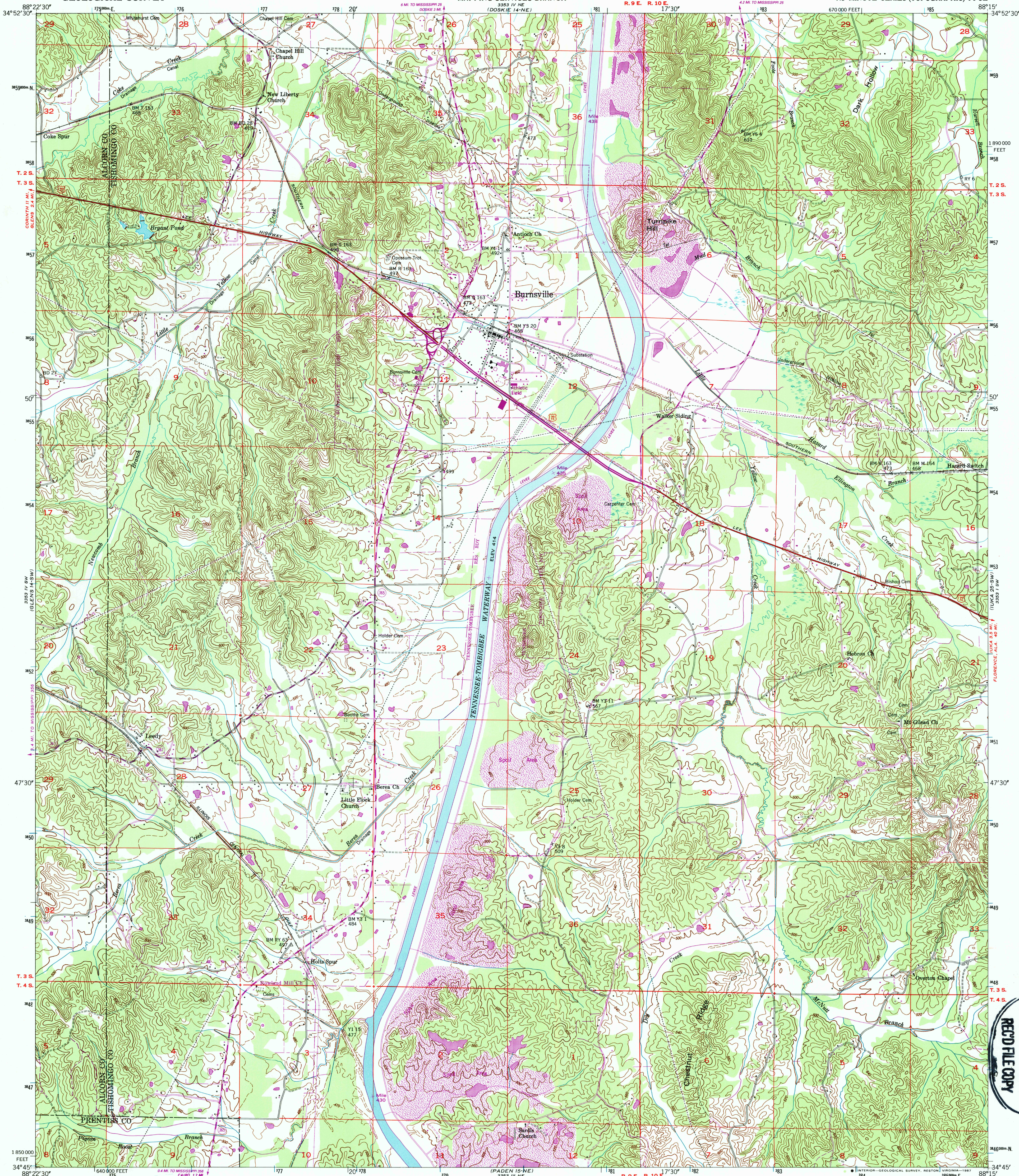


UNITED STATES  
DEPARTMENT OF THE INTERIOR  
GEOLOGICAL SURVEY

UNITED STATES  
TENNESSEE VALLEY AUTHORITY  
MAPPING SERVICES BRANCH  
3353 IV NE  
(DOSKIE 14-NE)

BURNSVILLE QUADRANGLE  
MISSISSIPPI  
7.5 MINUTE SERIES (TOPOGRAPHIC) 14-SE



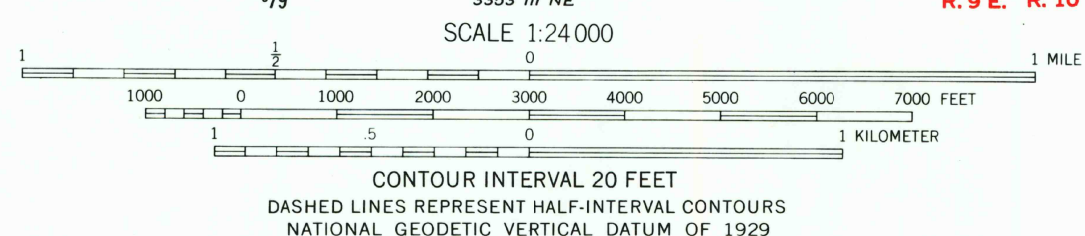
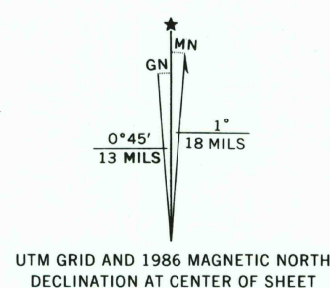
Mapped and edited by Tennessee Valley Authority  
Published by the Geological Survey

Control by NOS/NOAA, USGS, CE, and TVA  
Topography by USGS and TVA by photogrammetric methods  
from aerial photographs taken 1948. Field checked by TVA, 1950

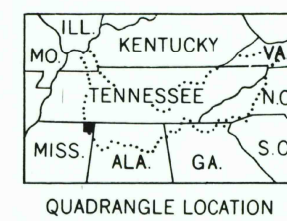
Polyconic projection. 10,000-foot grid ticks based on  
Mississippi coordinate system, east zone  
1000-meter Universal Transverse Mercator grid ticks,  
zone 16, shown in blue. 1927 North American Datum  
To place on the predicted North American Datum 1983  
move the projection lines 8 meters south and  
3 meters east as shown by dashed corner ticks

There may be private inholdings within the boundaries of  
the National or State reservations shown on this map

Revisions shown in purple and woodland compiled by  
the Tennessee Valley Authority from aerial photographs  
taken 1981 and 1983 and other sources. Contours adjusted  
adjacent to certain photorevised hydrographic features  
This information not field checked. Map edited 1986



THIS MAP COMPLIES WITH NATIONAL MAP ACCURACY STANDARDS  
FOR SALE BY U.S. GEOLOGICAL SURVEY, DENVER, COLORADO 80225, OR RESTON, VIRGINIA 22092  
AND U.S. TENNESSEE VALLEY AUTHORITY, CHATTANOOGA, TENN. 37401, OR KNOXVILLE, TENN. 37902  
A FOLDER DESCRIBING TOPOGRAPHIC MAPS AND SYMBOLS IS AVAILABLE ON REQUEST



Fine purple dashed lines indicate selected fence and field lines where  
generally visible on aerial photographs. This information is unchecked

ROAD CLASSIFICATION		(TVA 14-SE)
Primary highway, all weather, hard surface	Light-duty road, all weather, improved surface	
Secondary highway, all weather, hard surface	Unimproved road, fair or dry weather	
Interstate Route	U. S. Route	State Route

BURNSVILLE, MISS.  
34088-G3-TF-024

1950  
PHOTOREVISED 1986  
DMA 3353 IV SE-SERIES V843

USGS NMU HISTORICAL MAP  
SERIES 1987  
REC'D FILE COPY