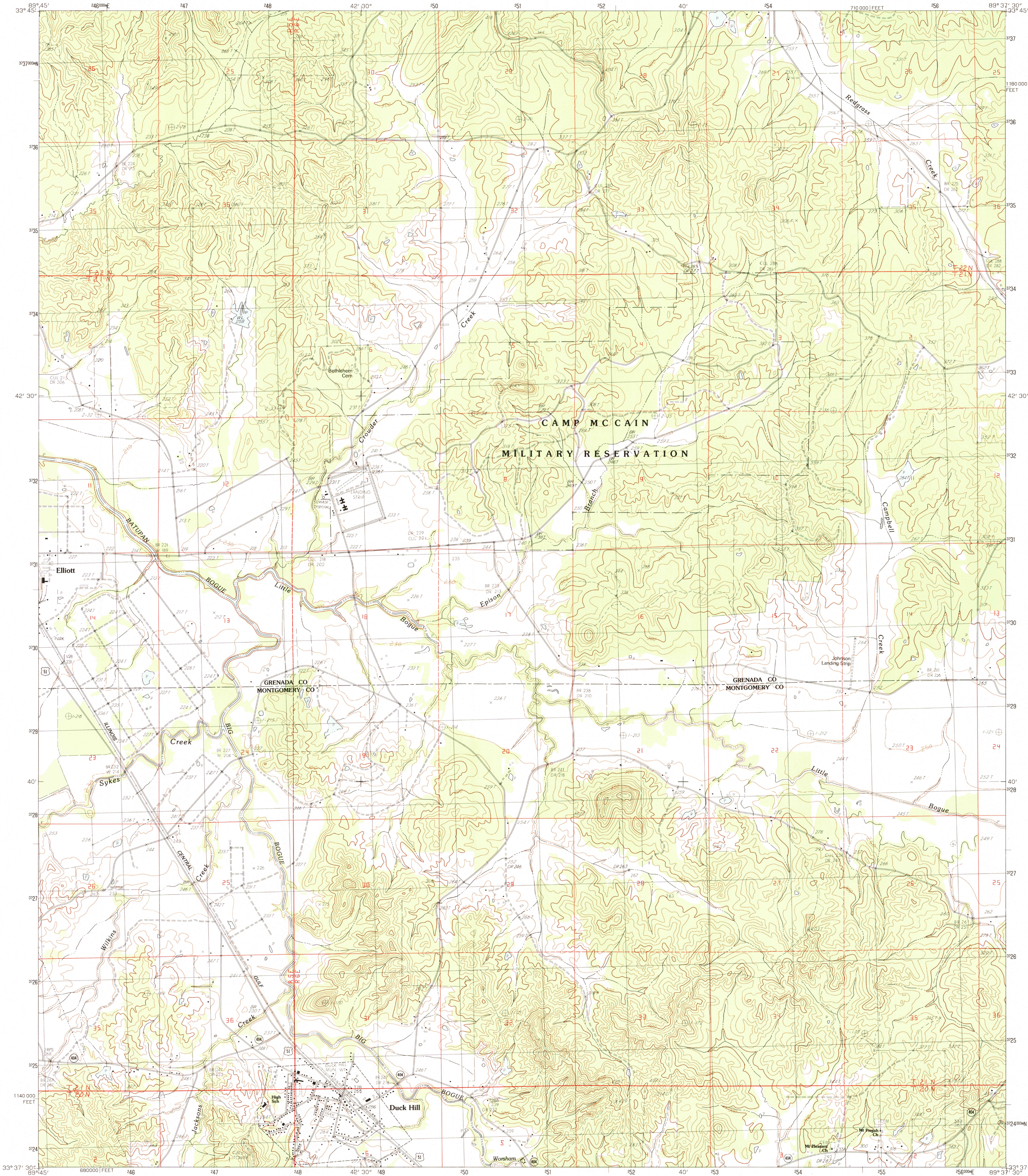


UNITED STATES
DEPARTMENT OF THE INTERIOR
GEOLOGICAL SURVEY

DUCK HILL QUADRANGLE
MISSISSIPPI
7.5 MINUTE SERIES (TOPOGRAPHIC)

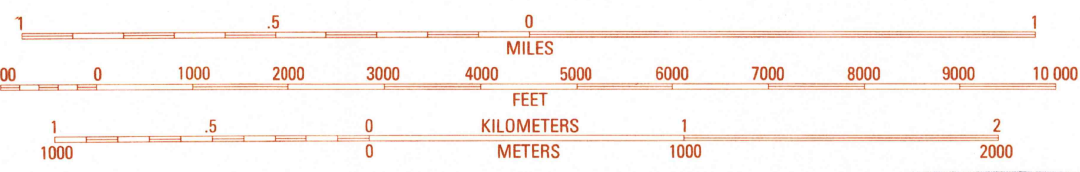


PRODUCED BY THE UNITED STATES GEOLOGICAL SURVEY
CONTROL BY USGS AND NOS/NOAA
COMPILED FROM AERIAL PHOTOGRAPHS TAKEN 1979
FIELD CHECKED 1980. MAP EDITED 1983
PROJECTION TRANSVERSE MERCATOR
GRID: 1000-METER UNIVERSAL TRANSVERSE MERCATOR ZONE 16
10,000-FOOT STATE GRID TICKS MISSISSIPPI, WEST ZONE
UTM GRID DECLINATION 129° WEST
1983 MAGNETIC NORTH DECLINATION 300° EAST
VERTICAL DATUM NATIONAL GEODETIC VERTICAL DATUM OF 1929
HORIZONTAL DATUM 1927 NORTH AMERICAN DATUM
To place on the predicted North American Datum of 1983
move the projection lines as shown by dashed corner ticks
(10 meters south and 7 meters east)
There may be private inholdings within the boundaries of any
Federal and State reservations shown on this map

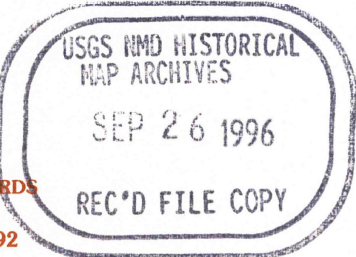
PROVISIONAL MAP
Produced from original
manuscript drawings. Infor-
mation shown as of date of
field check.

THIS MAP COMPLIES WITH NATIONAL MAP ACCURACY STANDARDS
FOR SALE BY U.S. GEOLOGICAL SURVEY
DENVER, COLORADO 80225, OR RESTON, VIRGINIA 22092

SCALE 1:24 000



CONTOUR INTERVAL 20 FEET
SUPPLEMENTARY CONTOUR INTERVAL 10 FEET
To convert feet to meters multiply by .3048
To convert meters to feet multiply by 3.2808



1	2	3	1 Grenada
			2 Kincaid
			3 Gore Springs
4		5	4 Tie Plant
			5 Sweetman
			6 McCarlin
6	7	8	7 Eskridge
			8 Lodi

ADJOINING 7.5' QUADRANGLE NAMES

- ROAD LEGEND**
- Improved Road
 - Unimproved Road
 - Trail
 - Interstate Route
 - U.S. Route
 - State Route

DUCK HILL, MISSISSIPPI
PROVISIONAL EDITION 1983

33089-F6-TF-024

