

2948 I SE  
CLINTON

2948 I SE  
TERRY

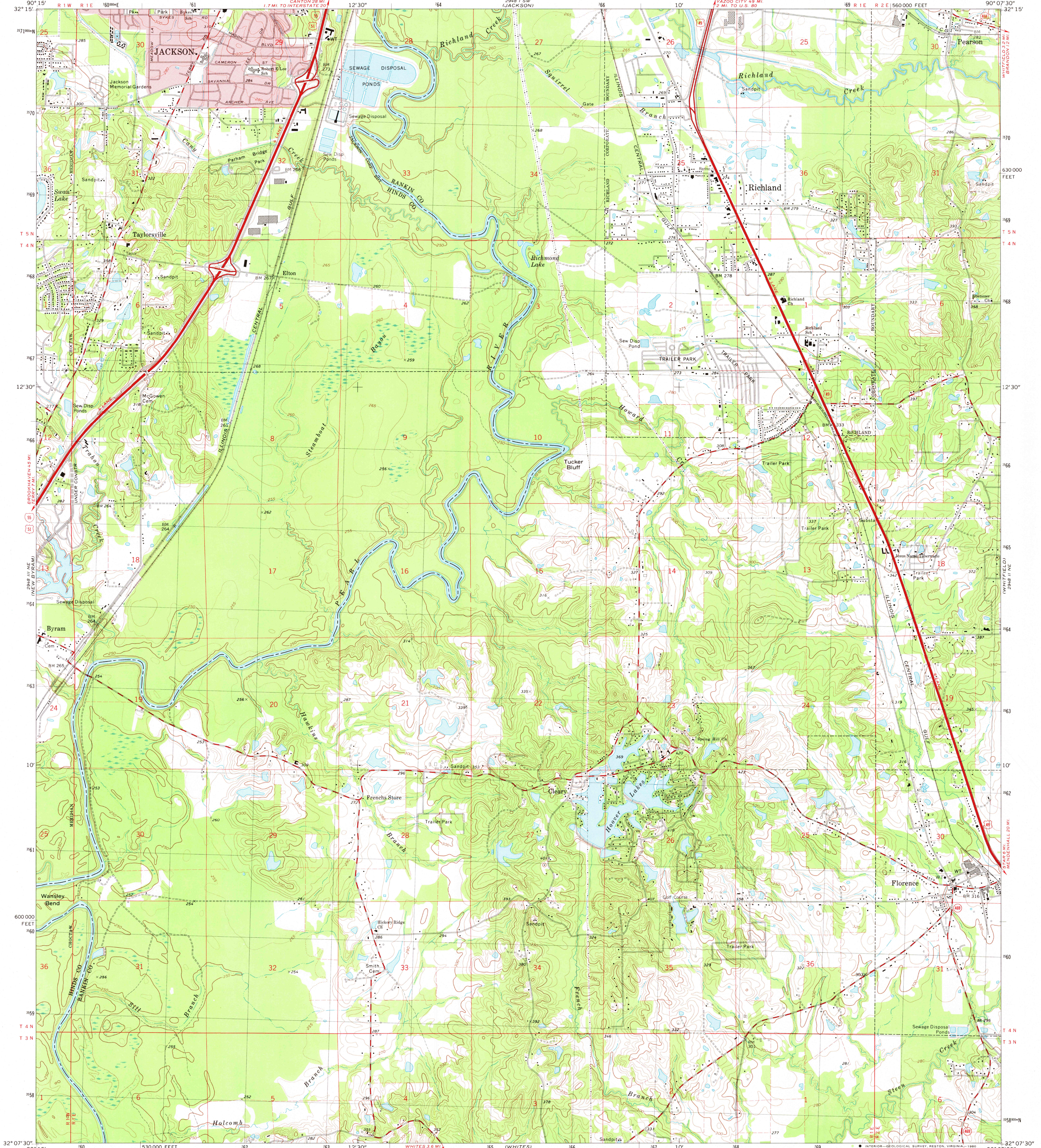
UNITED STATES  
DEPARTMENT OF THE INTERIOR  
GEOLOGICAL SURVEY

FLORENCE QUADRANGLE  
MISSISSIPPI  
7.5 MINUTE SERIES (TOPOGRAPHIC)

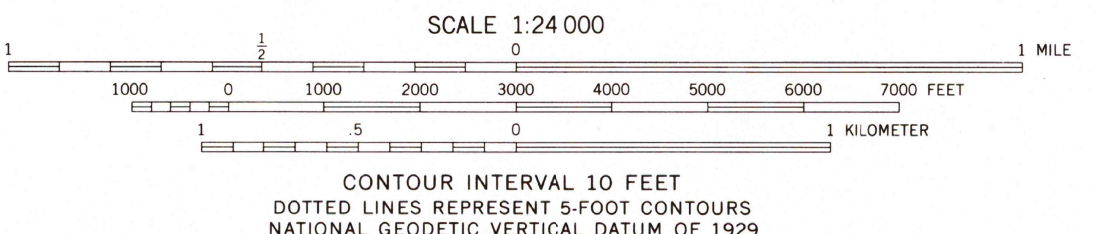
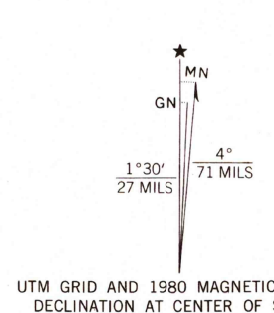
2948 I SE  
LACKSON SE

2948 I SE  
STAR 6 MI  
MENDENHALL 20 MI

2948 I SE  
STAR 1 SE



Mapped, edited, and published by the Geological Survey  
Control by USGS and NOS/NOAA  
Topography by photogrammetric methods from aerial photographs  
taken 1968. Field checked 1971  
Revision primarily limited to detail visible on high-altitude photographs  
taken 1977. Field checked 1979. Map edited 1980  
Projection and 10,000-foot grid ticks: Mississippi coordinate  
system, west zone (transverse Mercator)  
1000-meter Universal Transverse Mercator grid, zone 15  
1927 North American Datum  
To place on the predicted North American Datum 1983  
move the projection lines 14 meters south and  
8 meters east as shown by dashed corner ticks  
Red tint indicates area in which only landmark buildings are shown  
Fine red dashed lines indicate selected fence and field lines where  
generally visible on aerial photographs. This information is unchecked



THIS MAP COMPLIES WITH NATIONAL MAP ACCURACY STANDARDS  
FOR SALE BY U. S. GEOLOGICAL SURVEY, RESTON, VIRGINIA 22092  
A FOLDER DESCRIBING TOPOGRAPHIC MAPS AND SYMBOLS IS AVAILABLE ON REQUEST



ROAD CLASSIFICATION	
Primary highway, hard surface	Light-duty road, hard or improved surface
Secondary highway, hard surface	Unimproved road
Interstate Route	U. S. Route
	State Route

USGS  
Historical File  
Topographic Division

FLORENCE, MISS.  
N3207 5-W9007 5/7.5  
1980

DMA 2948 II NW-SERIES V943

SEP 30 1980

2000