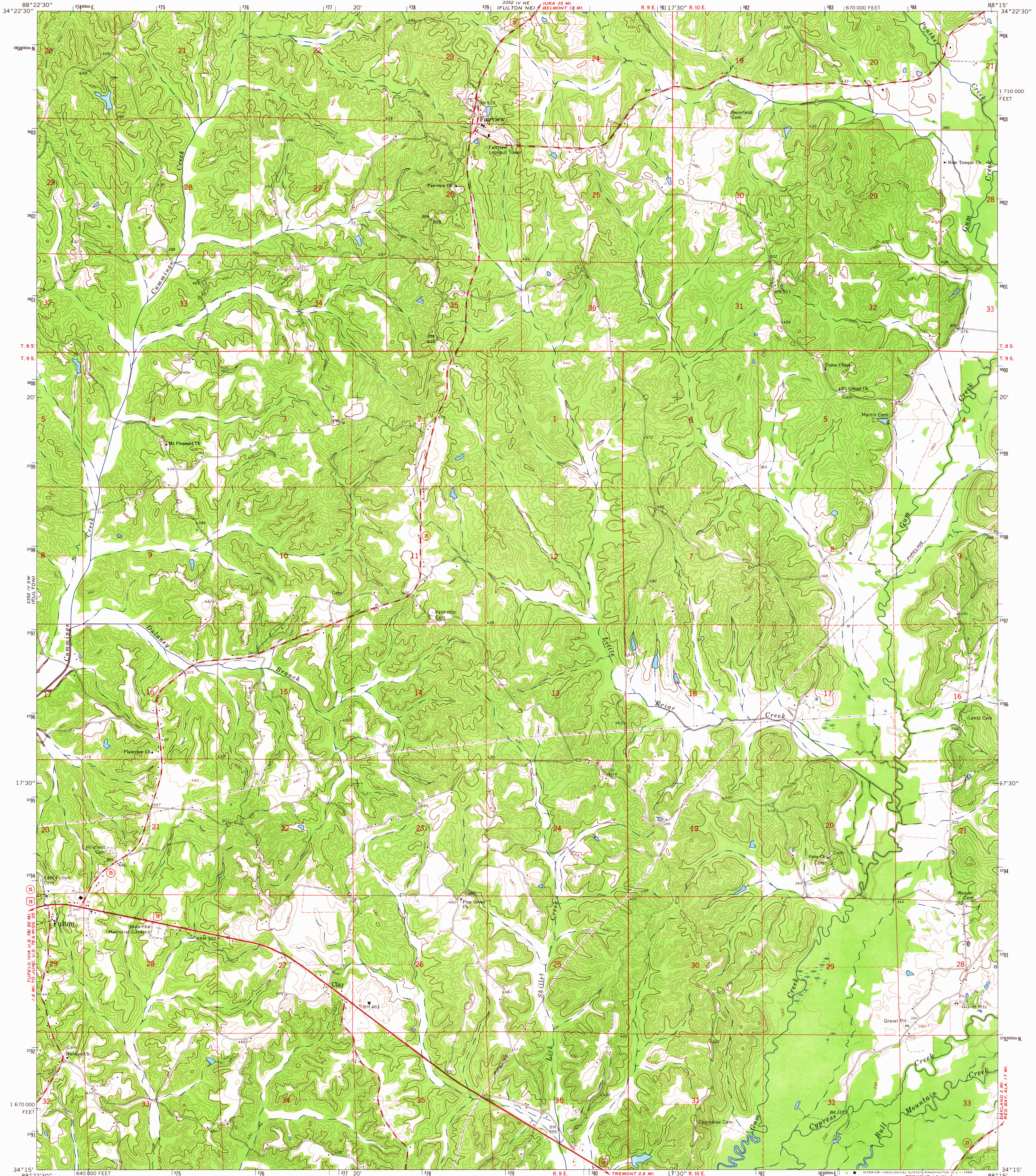


3352 IV SE (REVISED)

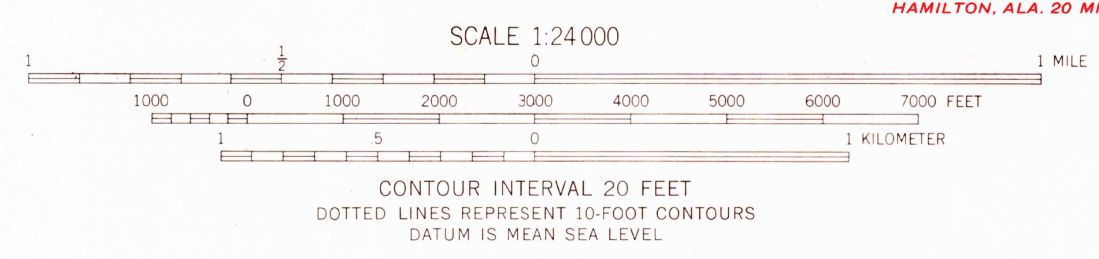
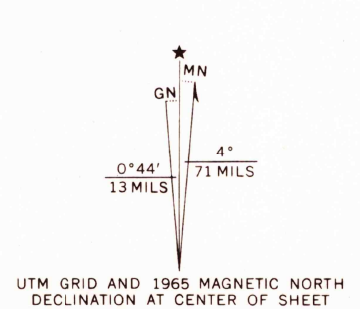
UNITED STATES
DEPARTMENT OF THE INTERIOR
GEOLOGICAL SURVEY

FULTON SE QUADRANGLE
MISSISSIPPI-ITAWAMBA CO.
7.5 MINUTE SERIES (TOPOGRAPHIC)

3352 IV SE (REVISED)



Mapped, edited, and published by the Geological Survey
Control by USGS and USC&GS
Topography by photogrammetric methods from aerial photographs taken 1963. Field checked 1965
Polyconic projection. 1927 North American datum
10,000-foot grid based on Mississippi coordinate system, east zone
1000-meter Universal Transverse Mercator grid ticks, zone 16, shown in blue
Fine red dashed lines indicate selected fence and field lines where generally visible on aerial photographs. This information is unchecked



USCS
Historical File
Topographic Division



ROAD CLASSIFICATION
Heavy-duty ——— Light-duty - - - - -
Medium-duty - - - - - Unimproved dirt - - - - -
U.S. Route □ State Route ○

U.S.G.S.
FILE COPY
TOPOGRAPHIC DIVISION

FULTON SE, MISS.
N3415-W8815/7.5
1965
AMS 3352 IV SE-SERIES V843

THIS MAP COMPLIES WITH NATIONAL MAP ACCURACY STANDARDS
FOR SALE BY U.S. GEOLOGICAL SURVEY, WASHINGTON, D.C. 20242
A FOLDER DESCRIBING TOPOGRAPHIC MAPS AND SYMBOLS IS AVAILABLE ON REQUEST

1970
JUN 7 1966