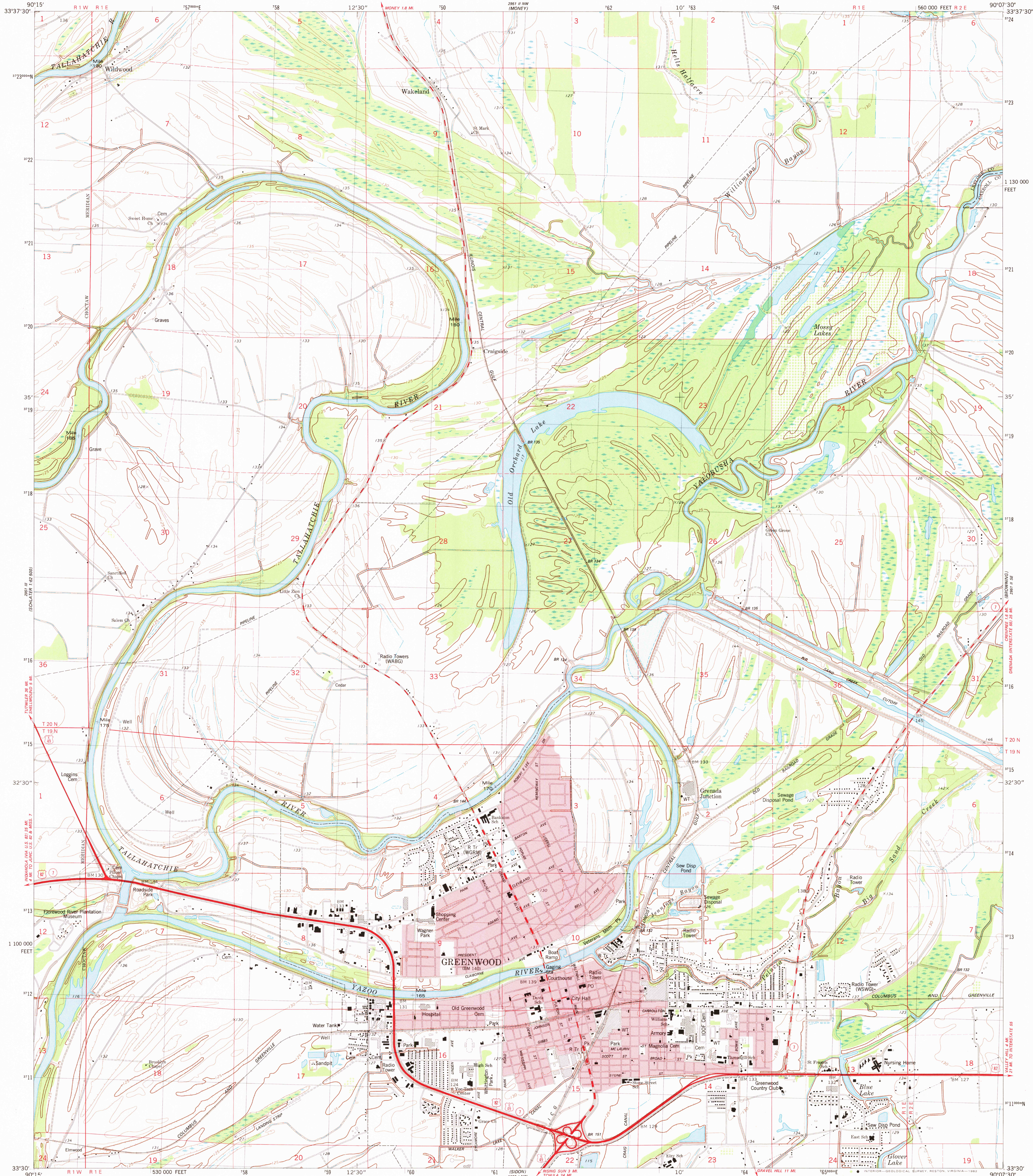


UNITED STATES  
DEPARTMENT OF THE INTERIOR  
GEOLOGICAL SURVEY

GREENWOOD QUADRANGLE

MISSISSIPPI  
7.5 MINUTE SERIES (TOPOGRAPHIC)

SW/4 GREENWOOD 15' QUADRANGLE



Mapped, edited, and published by the Geological Survey

Control by USGS, NOS/NOAA, and Mississippi Highway Department

Topography by photogrammetric methods from aerial photographs taken 1976. Field checked 1977. Map edited 1982

Projection and 10,000-foot grid ticks: Mississippi coordinate system, west zone (transverse Mercator)

1000-meter Universal Transverse Mercator grid, zone 15

1927 North American Datum

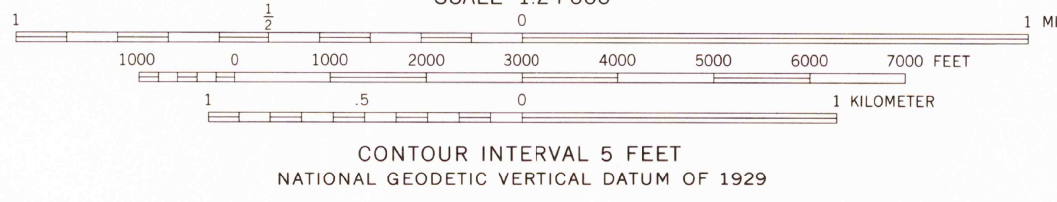
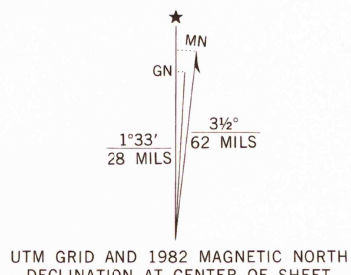
To place on the predicted North American Datum 1983

move the projection lines 10 meters south and

8 meters east as shown by dashed corner ticks

Red tint indicates areas in which only landmark buildings are shown

Fine red dashed lines indicate selected fence and field lines where generally visible on aerial photographs. This information is unchecked



THIS MAP COMPLIES WITH NATIONAL MAP ACCURACY STANDARDS  
FOR SALE BY U. S. GEOLOGICAL SURVEY, RESTON, VIRGINIA 22092  
A FOLDER DESCRIBING TOPOGRAPHIC MAPS AND SYMBOLS IS AVAILABLE ON REQUEST

ROAD CLASSIFICATION

- Primary highway, hard surface
- Secondary highway, hard surface
- Light-duty road, hard or improved surface
- Unimproved road
- Interstate Route
- U. S. Route
- State Route

GREENWOOD, MISS.  
SW/4 GREENWOOD 15' QUADRANGLE  
N3330-W9007.5/7.5

1982

DMA 2951 II SW-SERIES V843

DEC 15 1982