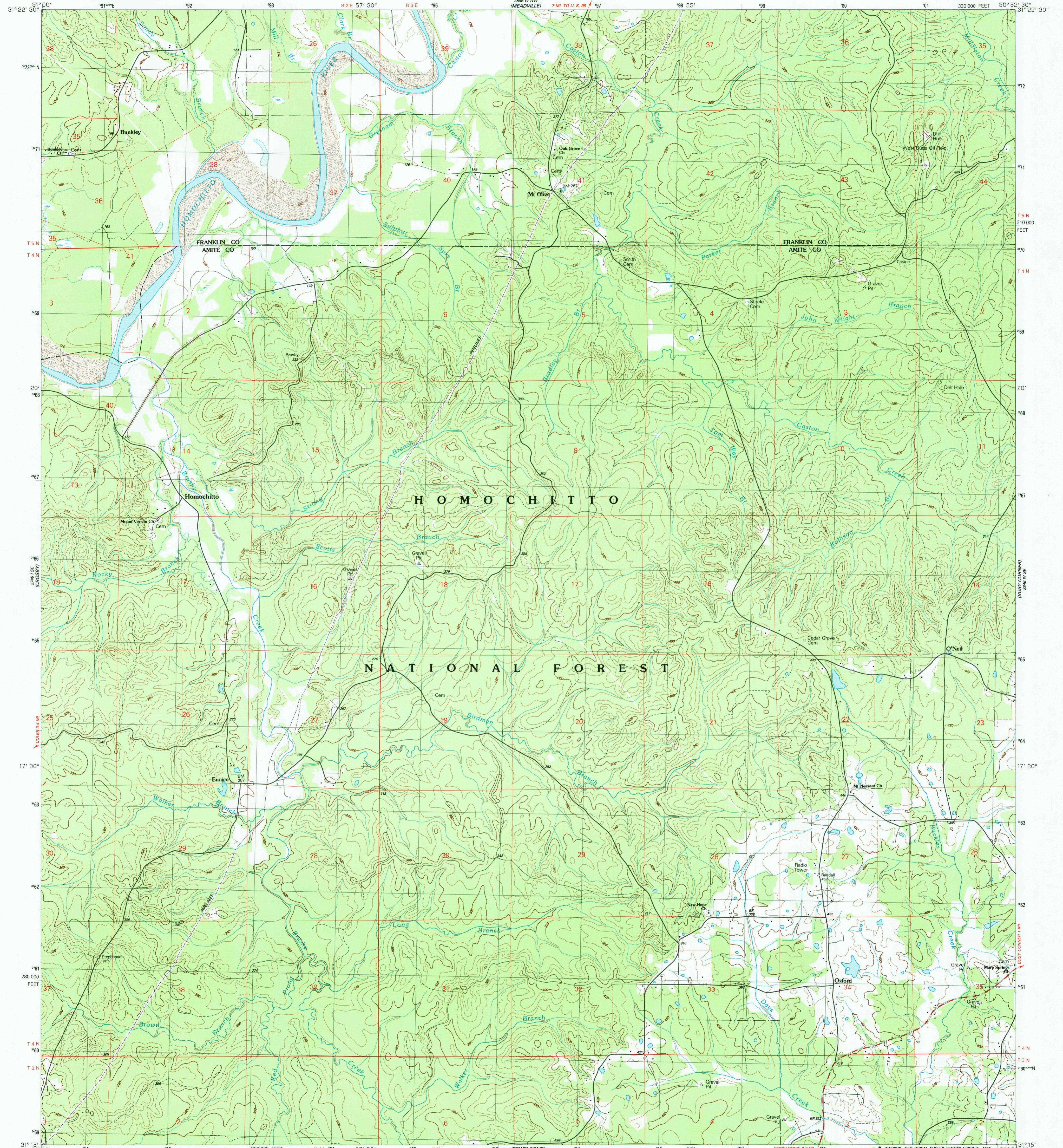


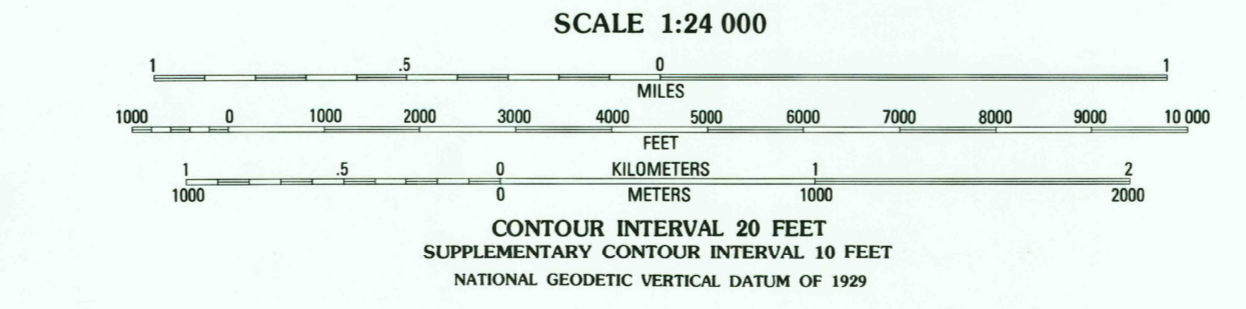
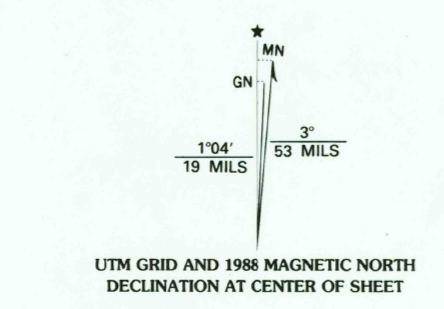
26° 15' N
106° 00' W
MOBILE

HOMOCHITTO QUADRANGLE
MISSISSIPPI
7.5 MINUTE SERIES (TOPOGRAPHIC)
SW-4 BLUDE 15' QUADRANGLE
330 000 FEET
26° 15' N
90° 52' 30" W

UNITED STATES
DEPARTMENT OF THE INTERIOR
GEOLOGICAL SURVEY



Produced by the United States Geological Survey
Control by USGS and NOS/NOAA
Topography by photogrammetric methods from aerial photographs taken 1957-58 and 1962. Revised from aerial photographs taken 1984. Field checked 1987. Map edited 1988
Projection and 10,000-foot grid ticks: Mississippi coordinate system, west zone (transverse Mercator)
1000-meter Universal Transverse Mercator grid, zone 15
1927 North American Datum
To place on the predicted North American Datum 1983, move the projection lines 16 meters south and 10 meters east as shown by dashed corner ticks
There may be private inholdings within the boundaries of the National or State reservations shown on this map
Fine red dashed lines indicate selected fence and field lines where generally visible on aerial photographs. This information is unchecked



ROAD CLASSIFICATION

Primary highway, hard surface	Light-duty road, hard or improved surface
Secondary highway, hard surface	Unimproved road
Interstate Route	U.S. Route
	State Route

USGS NHD HISTORICAL MAP
SEP 15 1988
REC'D FILE COPY

HOMOCHITTO, MISS.
SW-4 BLUDE 15' QUADRANGLE
31090-C8-TF-024
1988
DMA 2846 IV SW-SERIES V843

THIS MAP COMPLIES WITH NATIONAL MAP ACCURACY STANDARDS
FOR SALE BY U.S. GEOLOGICAL SURVEY, DENVER, COLORADO 80225, OR RESTON, VIRGINIA 22092
A FOLDER DESCRIBING TOPOGRAPHIC MAPS AND SYMBOLS IS AVAILABLE ON REQUEST