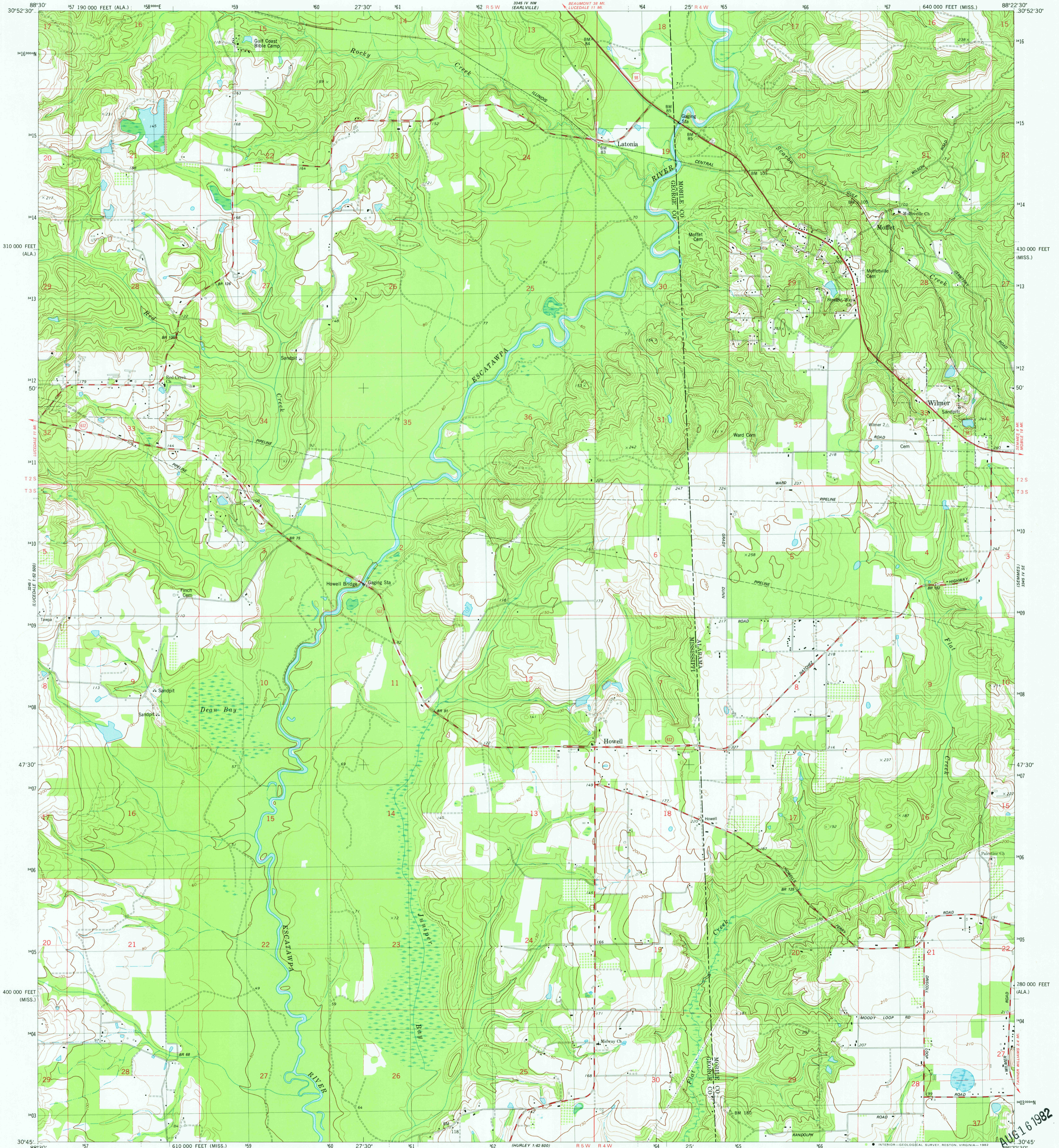
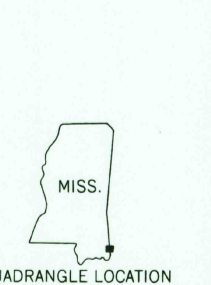
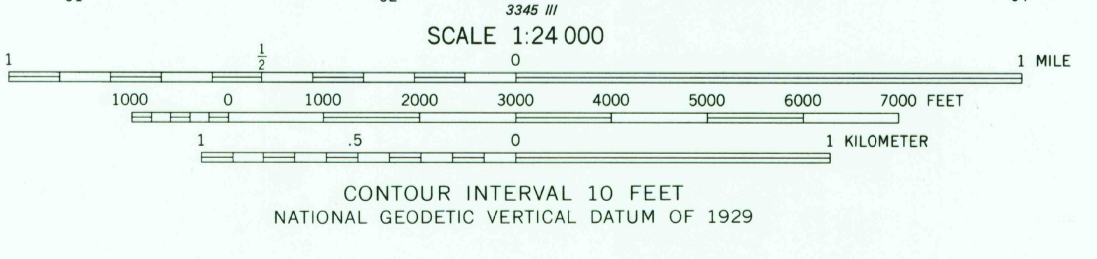
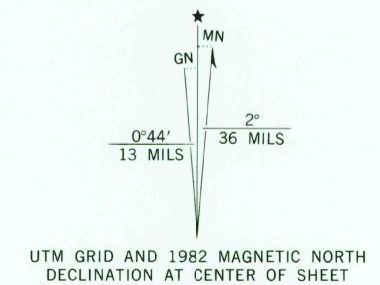


UNITED STATES
DEPARTMENT OF THE INTERIOR
GEOLOGICAL SURVEY

HOWELL QUADRANGLE
MISSISSIPPI-ALABAMA
7.5 MINUTE SERIES (TOPOGRAPHIC)
SW/4 WILMER 15' QUADRANGLE



Mapped, edited, and published by the Geological Survey
Control by USGS, NOS/NOAA, and Alabama Geodetic Survey
Topography by photogrammetric methods from aerial photographs taken 1975. Field checked 1978. Map edited 1982
Projection: Mississippi coordinate system, east zone (transverse Mercator) 10,000-foot grid ticks based on Mississippi coordinate system, east zone and Alabama coordinate system, west zone 1000-meter Universal Transverse Mercator grid, zone 16. 1927 North American Datum
To place on the predicted North American Datum 1983 move the projection lines 17 meters south and 2 meters east as shown by dashed corner ticks
Fine red dashed lines indicate selected fence and field lines where generally visible on aerial photographs. This information is unchecked



ROAD CLASSIFICATION

Primary highway, hard surface	Light-duty road, hard or improved surface
Secondary highway, hard surface	Unimproved road
Interstate Route	U. S. Route
	State Route

THIS MAP COMPLIES WITH NATIONAL MAP ACCURACY STANDARDS FOR SALE BY U. S. GEOLOGICAL SURVEY, RESTON, VIRGINIA 22092
A FOLDER DESCRIBING TOPOGRAPHIC MAPS AND SYMBOLS IS AVAILABLE ON REQUEST

HOWELL, MISS.-ALA.
SW/4 WILMER 15' QUADRANGLE
N3045-W822.5/7.5
1982
DMA 3345 IV SW-SERIES V483

RETURN TO:
USGS NMD HISTORICAL MAP ARCHIVES

AUG 16 1982
TANNER WILLIAMS 2.4 MI.
3045 W 822.5 E