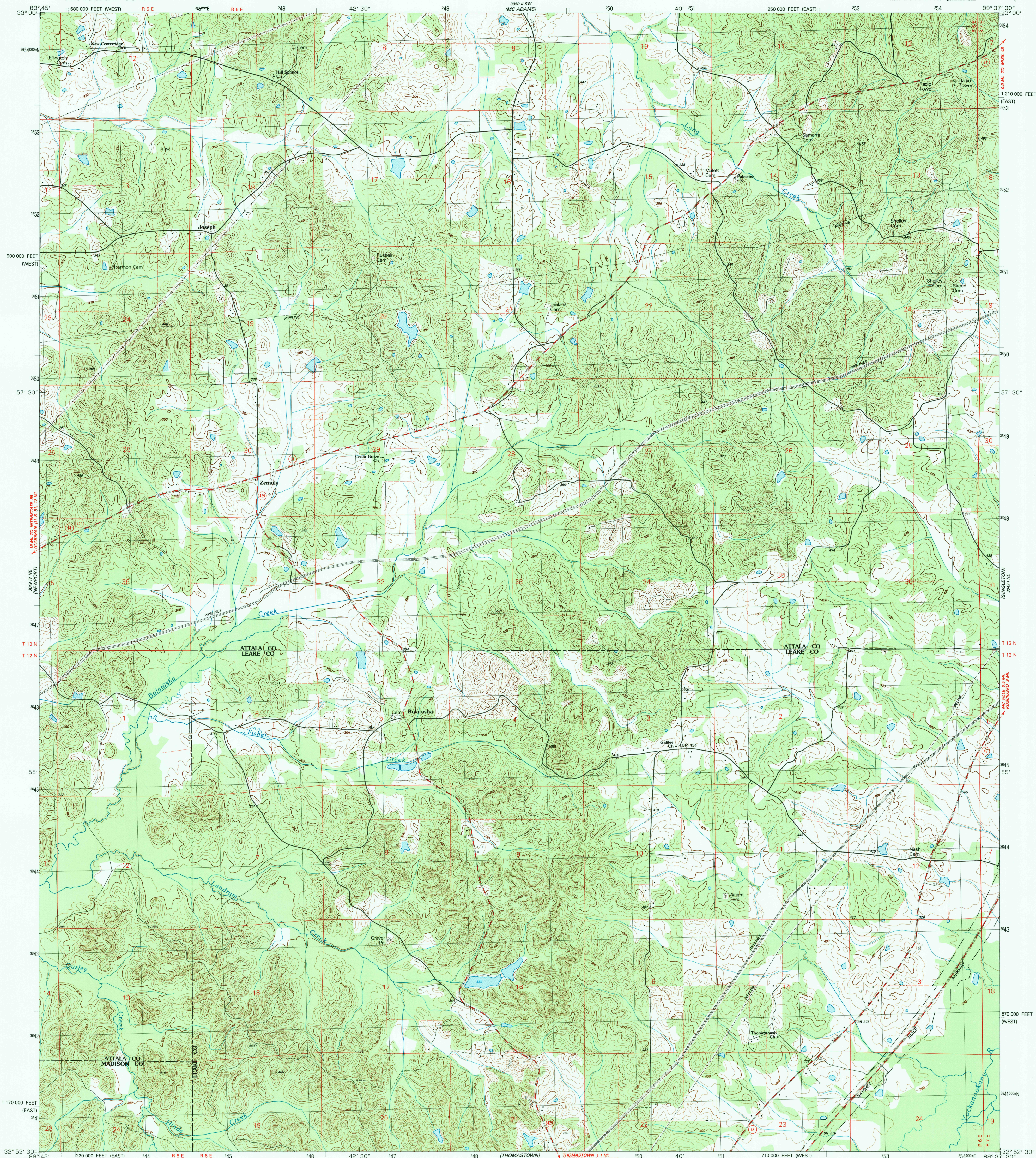
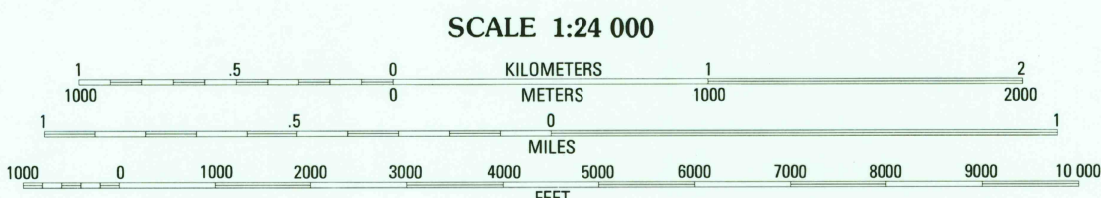
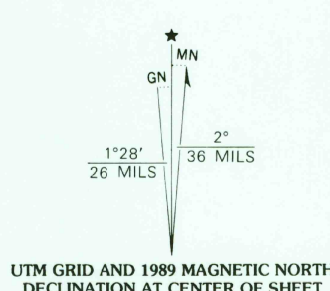


UNITED STATES
DEPARTMENT OF THE INTERIOR
GEOLOGICAL SURVEY

JOSEPH QUADRANGLE
MISSISSIPPI
7.5 MINUTE SERIES (TOPOGRAPHIC)
NW/4 THOMASTOWN 15' QUADRANGLE



Produced by the United States Geological Survey
Control by USGS and NOS/NOAA
Topography by photogrammetric methods from aerial photographs taken 1958. Revised from aerial photographs taken 1983-84. Field checked 1987. Map edited 1989.
Projection: Mississippi coordinate system, east zone (transverse Mercator)
10,000-foot grid ticks: Mississippi coordinate system, east and west zones
1000-meter Universal Transverse Mercator grid, zone 16
1927 North American Datum
To place on the predicted North American Datum 1983, move the projection lines 12 meters south and 7 meters east as shown by dashed corner ticks. There may be private inholdings within the boundaries of the National or state reservations shown on this map. Fine red dashed lines indicate selected fence and field lines where generally visible on aerial photographs. This information is unchecked.

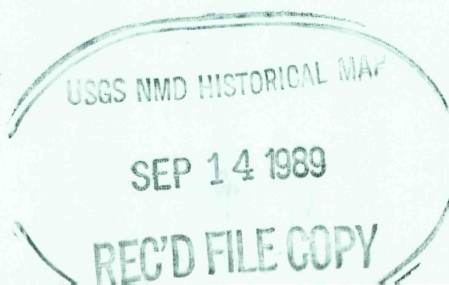


CONTOUR INTERVAL 10 FEET
NATIONAL GEODETIC VERTICAL DATUM OF 1929

THIS MAP COMPLIES WITH NATIONAL MAP ACCURACY STANDARDS
FOR SALE BY U. S. GEOLOGICAL SURVEY
DENVER, COLORADO 80225, OR RESTON, VIRGINIA 22092
A FOLDER DESCRIBING TOPOGRAPHIC MAPS AND SYMBOLS IS AVAILABLE ON REQUEST



ROAD CLASSIFICATION
Primary highway, hard surface Light-duty road, hard or improved surface
Secondary highway, hard surface Unimproved road
Interstate Route U. S. Route State Route



JOSEPH, MISS.
NW/4 THOMASTOWN 15' QUADRANGLE
32089-H6-TF-024
1989
DMA 3049 I NW-SERIES V843