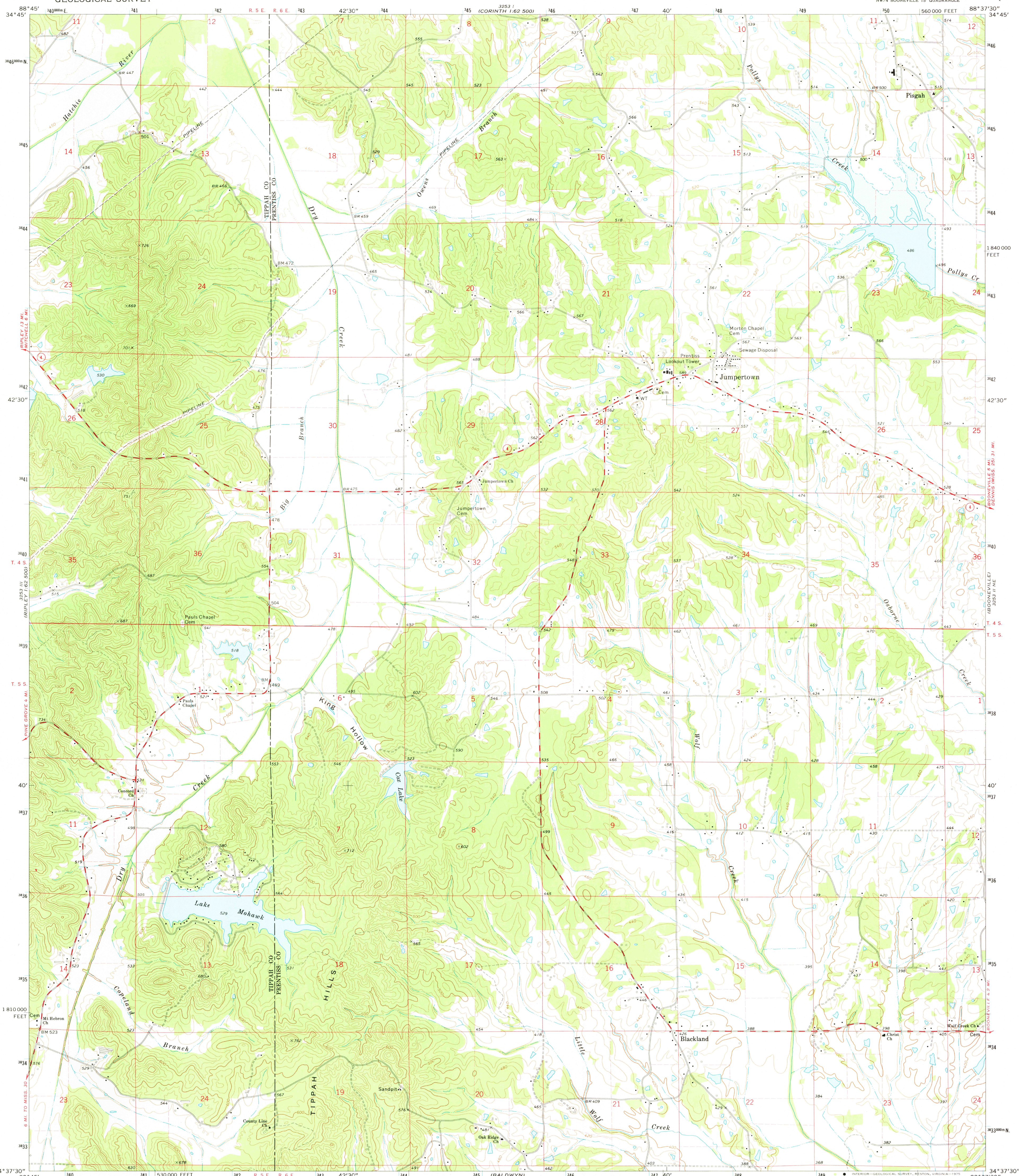


UNITED STATES
DEPARTMENT OF THE INTERIOR
GEOLOGICAL SURVEY

JUMPERTOWN QUADRANGLE
MISSISSIPPI
7.5 MINUTE SERIES (TOPOGRAPHIC)



Mapped, edited, and published by the Geological Survey

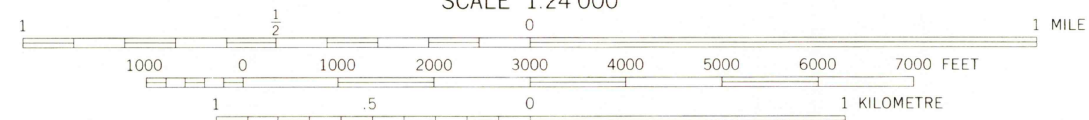
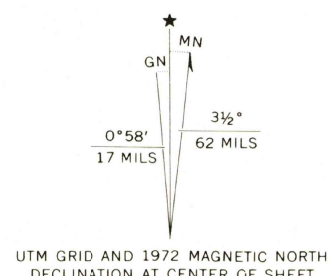
Control by USGS and USC&GS

Topography by photogrammetric methods from aerial photographs taken 1972. Field checked 1972

Projection and 10,000-foot grid ticks: Mississippi coordinate system, east zone (transverse Mercator)
1000-metre Universal Transverse Mercator grid ticks, zone 16, shown in blue. 1927 North American datum

Area covered by dashed light-blue pattern is subject to controlled inundation

Fine red dashed lines indicate selected fence and field lines where generally visible on aerial photographs. This information is unchecked



CONTOUR INTERVAL 20 FEET
DOTTED LINES REPRESENT 10-FOOT CONTOURS
NATIONAL GEODETIC VERTICAL DATUM OF 1929

THIS MAP COMPLIES WITH NATIONAL MAP ACCURACY STANDARDS
FOR SALE BY U.S. GEOLOGICAL SURVEY, RESTON, VIRGINIA 22092
A FOLDER DESCRIBING TOPOGRAPHIC MAPS AND SYMBOLS IS AVAILABLE ON REQUEST

ROAD CLASSIFICATION

Primary highway, hard surface	Light-duty road, hard or improved surface
Secondary highway, hard surface	Unimproved road
Interstate Route	U.S. Route
	State Route



USGS
HISTORICAL AIR
TOPOGRAPHIC DIVISION

JUMPERTOWN, MISS.
NW/4 BOONEVILLE 15' QUADRANGLE
N3437.5-W8837.5/7.5

1972

AMS 3253 II NW-SERIES V843

SEP 24 1975