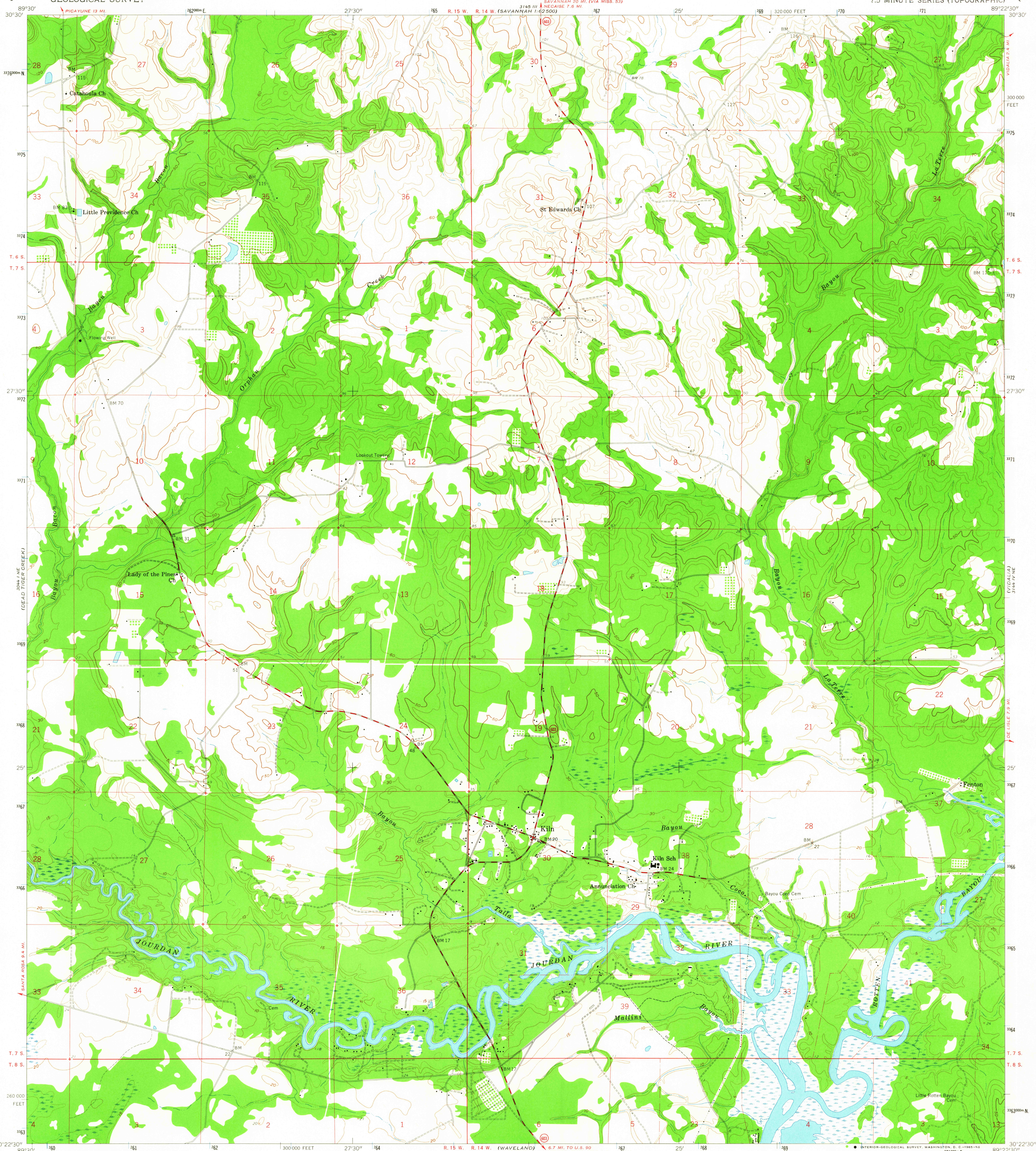


RECAPYUNE 13 MI
3044 I NE
(DEAD TIGER CREEK)

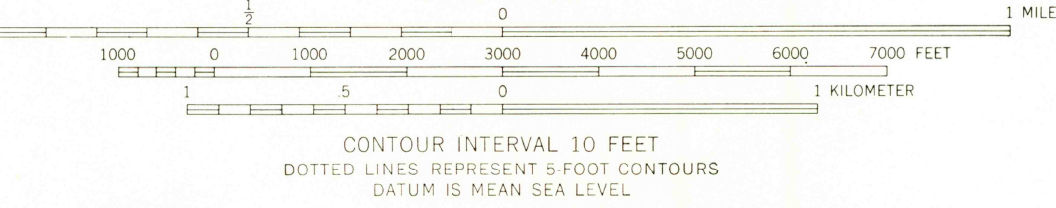
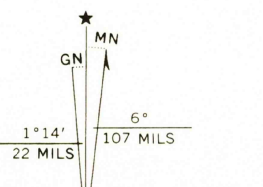
UNITED STATES
DEPARTMENT OF THE INTERIOR
GEOLOGICAL SURVEY

KILN QUADRANGLE
MISSISSIPPI—HANCOCK CO.
7.5 MINUTE SERIES (TOPOGRAPHIC)

SAVANNAH 20 MI (VIA MISS. 53)
3145 III
NECAISE 7.6 MI
SAVANNAH 1-62 500



Mapped, edited, and published by the Geological Survey
Control by USGS and USC&GS
Topography from aerial photographs by photogrammetric methods
and by planetable surveys 1959. Aerial photographs taken 1954
Polyconic projection. 1927 North American datum
10,000-foot grid based on Mississippi coordinate system, east zone
1000-meter Universal Transverse Mercator grid ticks,
zone 16, shown in blue



USGS
Historical File
Topographic Division

ROAD CLASSIFICATION
Medium-duty ——— Light-duty ———
Unimproved dirt - - - - -
State Route ○

KILN, MISS.
N 3022.5—W 8922.5/7.5

1959

AMS 3144 IV NW—SERIES W843

3185
APR 2 6 1965