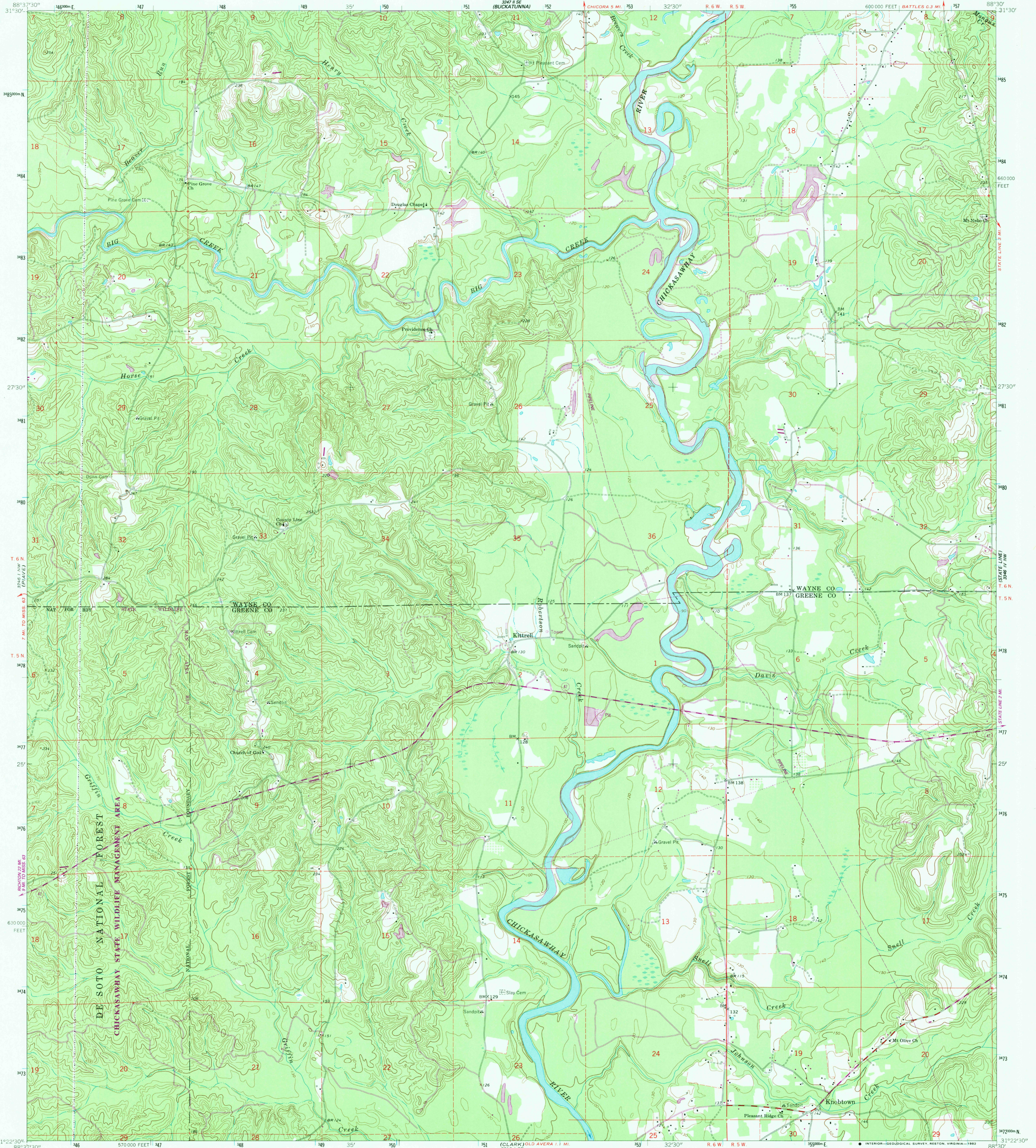
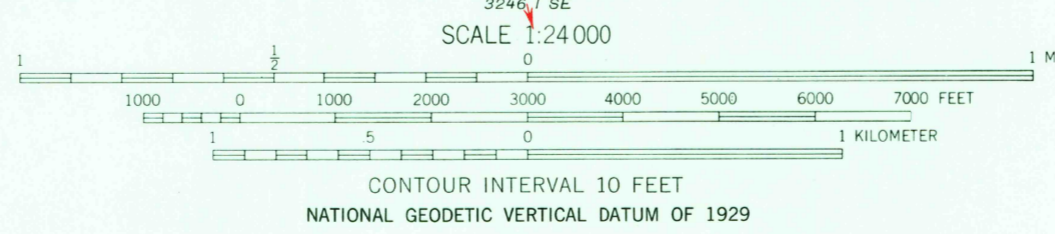
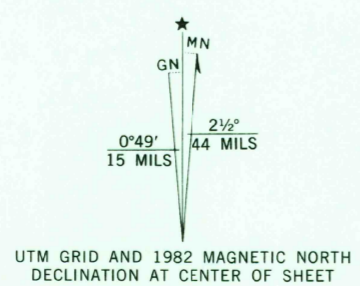


UNITED STATES  
DEPARTMENT OF THE INTERIOR  
GEOLOGICAL SURVEY

Knobtown Quadrangle  
Mississippi  
7.5 Minute Series (Topographic)



Mapped, edited, and published by the Geological Survey  
Control by USGS, USC&GS, and USCE  
Topography by photogrammetric methods from aerial  
photographs taken 1960. Field checked 1964  
Polyconic projection. 1927 North American datum  
10,000-foot grid based on Mississippi coordinate system, east zone  
1000-meter Universal Transverse Mercator grid ticks,  
zone 16, shown in blue  
To place on the predicted North American Datum 1983  
move the projection lines 15 meters south and  
3 meters east as shown by dashed corner ticks  
There may be private inholdings within the boundaries of  
the National or State reservations shown on this map  
Revisions shown in purple compiled from aerial photographs taken 1980  
and other sources. This information not field checked. Map edited 1982



ROAD CLASSIFICATION

Primary highway, hard surface	Light-duty road, hard or improved surface
Secondary highway, hard surface	Unimproved road
Interstate Route	U. S. Route
	State Route

THIS MAP COMPLIES WITH NATIONAL MAP ACCURACY STANDARDS  
FOR SALE BY U. S. GEOLOGICAL SURVEY, RESTON, VIRGINIA 22092  
A FOLDER DESCRIBING TOPOGRAPHIC MAPS AND SYMBOLS IS AVAILABLE ON REQUEST



Knobtown, Miss.  
N3122.5-W8830/7.5  
1964  
PHOTOREVISED 1982  
DMA 3246 I NE-SERIES V843

RETURN TO:  
USGS NHD HISTORICAL MAP ARCHIVES

MAY 6 1983  
1916