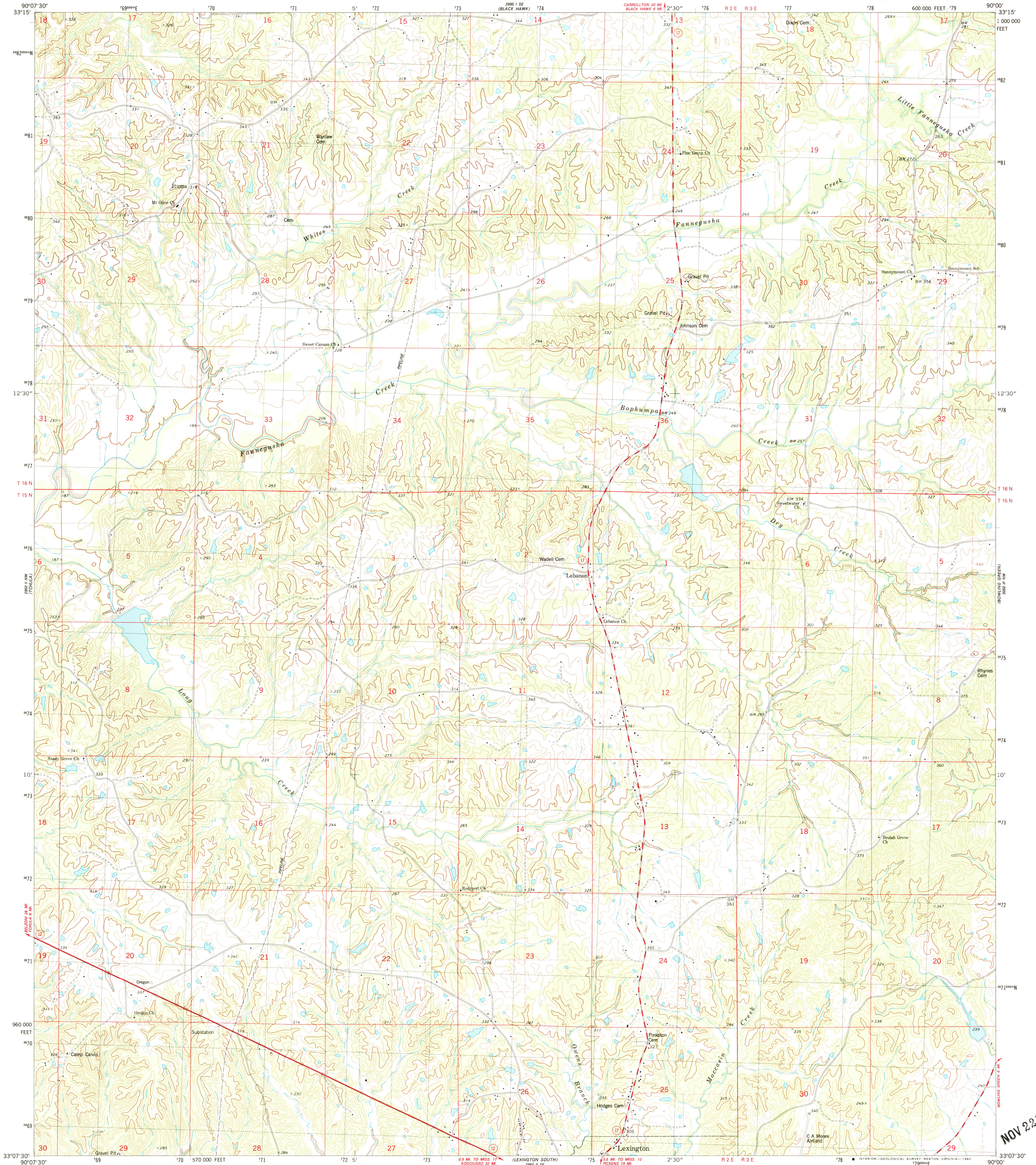
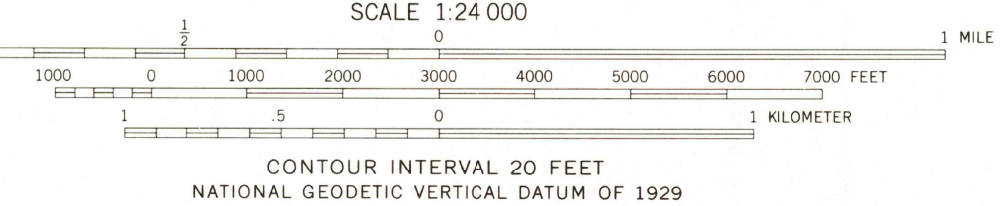
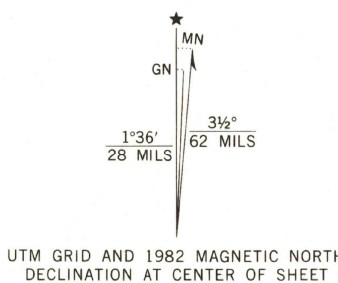


UNITED STATES
DEPARTMENT OF THE INTERIOR
GEOLOGICAL SURVEY

LEXINGTON NORTH QUADRANGLE
MISSISSIPPI-HOLMES CO.
7.5 MINUTE SERIES (TOPOGRAPHIC)
NE 1/4 LEXINGTON 15' QUADRANGLE



Mapped, edited, and published by the Geological Survey
Control by USGS and NOS/NOAA
Topography by photogrammetric methods from aerial photographs taken 1976. Field checked 1977. Map edited 1982
Projection and 10,000-foot grid ticks: Mississippi coordinate system, west zone (transverse Mercator)
1000-meter Universal Transverse Mercator grid, zone 15
1927 North American Datum
To place on the predicted North American Datum 1983 move the projection lines 11 meters south and 8 meters east as shown by dashed corner ticks
Fine red dashed lines indicate selected fence and field lines where generally visible on aerial photographs. This information is unchecked



THIS MAP COMPLIES WITH NATIONAL MAP ACCURACY STANDARDS
FOR SALE BY U.S. GEOLOGICAL SURVEY, RESTON, VIRGINIA 22092
A FOLDER DESCRIBING TOPOGRAPHIC MAPS AND SYMBOLS IS AVAILABLE ON REQUEST



ROAD CLASSIFICATION
Primary highway, hard surface ————— Improved surface
Secondary highway, hard surface ————— Unimproved road
Interstate Route ———— U. S. Route ———— State Route

LEXINGTON NORTH, MISS.
NE 1/4 LEXINGTON 15' QUADRANGLE
N3307.5-W9000/7.5

1982

DMA 2950 II NE-SERIES V843

NOV 22 1982
OVERS. WELLS
200 ft. SW