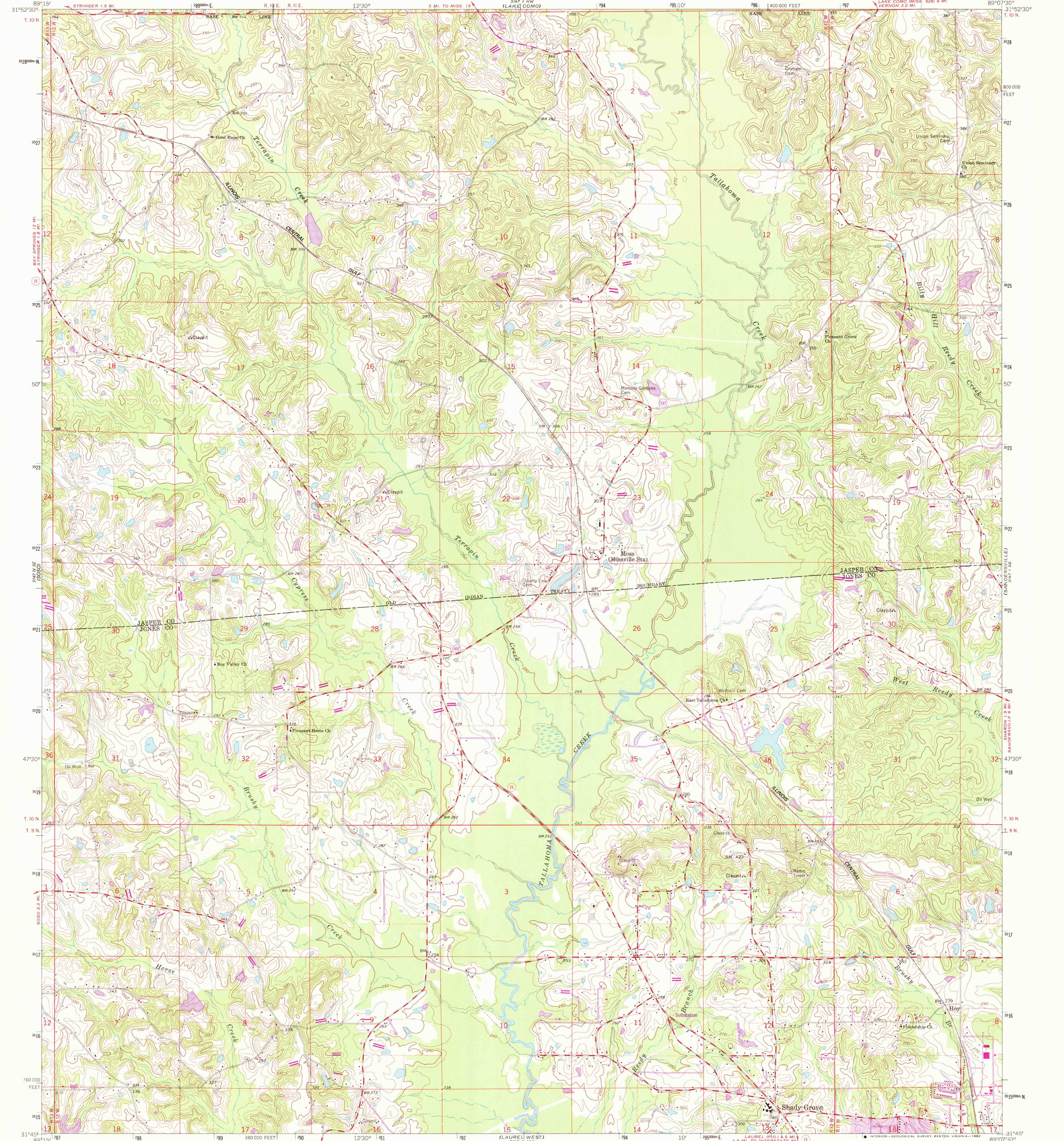


(Hazard)  
5/27/1982

UNITED STATES  
DEPARTMENT OF THE INTERIOR  
GEOLOGICAL SURVEY

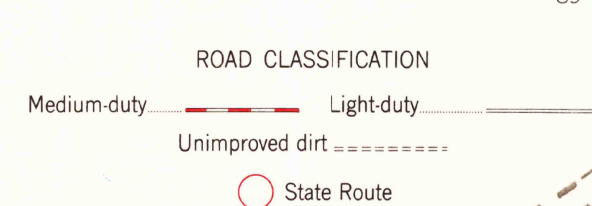
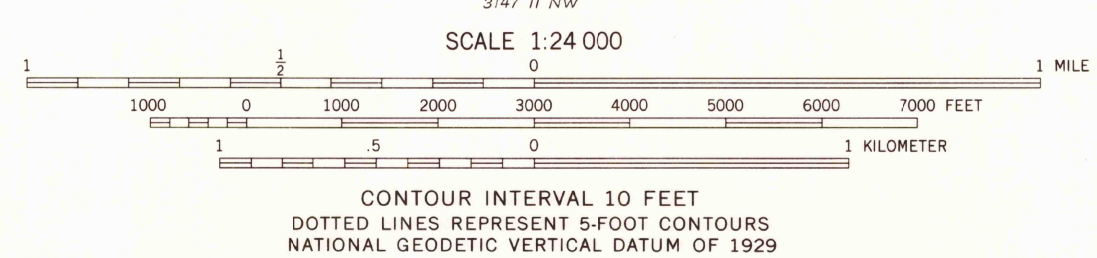
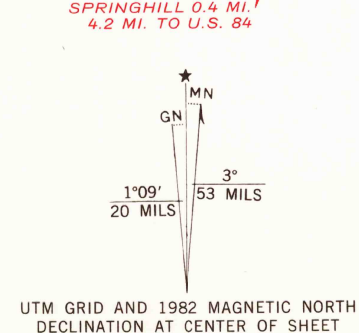
MOSS QUADRANGLE  
MISSISSIPPI  
7.5 MINUTE SERIES (TOPOGRAPHIC)

(Hazard)  
5/27/1982



(Hazard)  
5/27/1982

Mapped, edited, and published by the Geological Survey  
Control by USGS and USC&GS  
Topography by photogrammetric methods from aerial  
photographs taken 1960. Field checked 1964  
Polyconic projection, 1927 North American datum  
10,000-foot grid based on Mississippi coordinate system, east zone  
1000-meter Universal Transverse Mercator grid ticks,  
zone 16, shown in blue  
Fine red dashed lines indicate selected fence and field lines where  
generally visible on aerial photographs. This information is unchecked  
To place on the predicted North American Datum 1983  
move the projection lines 14 meters south and  
5 meters east as shown by dashed corner ticks  
Revisions shown in purple compiled from aerial photographs taken 1980  
and other sources. This information not field checked. Map edited 1982  
Purple tint indicates urban area



MOSS, MISS.  
N3145—W8907.5/7.5

1964  
PHOTOREVISED 1982  
DMA 3147 1 SW—SERIES V843

RETURN TO:  
USGS AND HISTORICAL MAP ARCHIVES

MAR 19 1983

2252