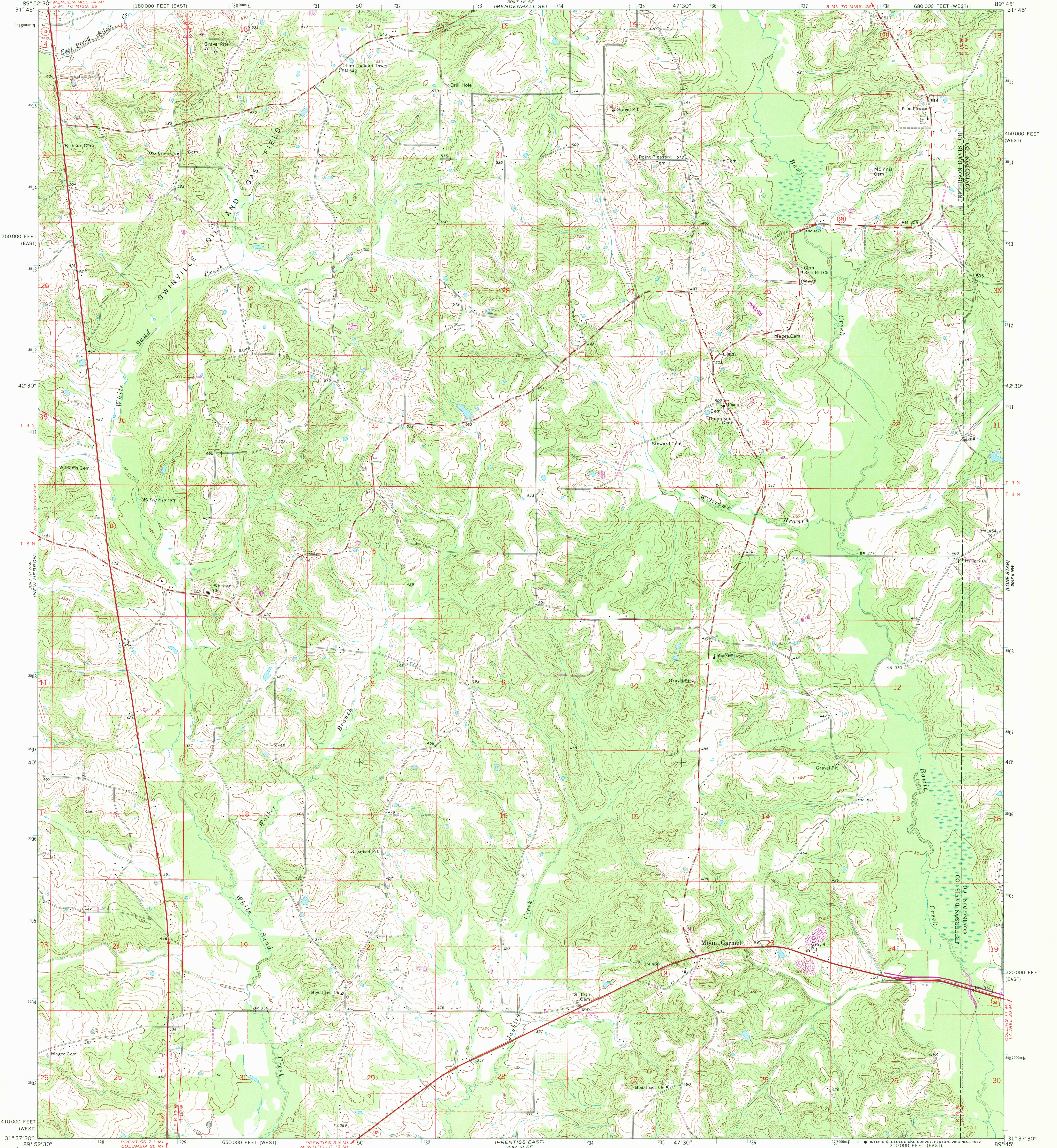


UNITED STATES  
DEPARTMENT OF THE INTERIOR  
GEOLOGICAL SURVEY

MOUNT CARMEL QUADRANGLE  
MISSISSIPPI  
7.5 MINUTE SERIES (TOPOGRAPHIC)

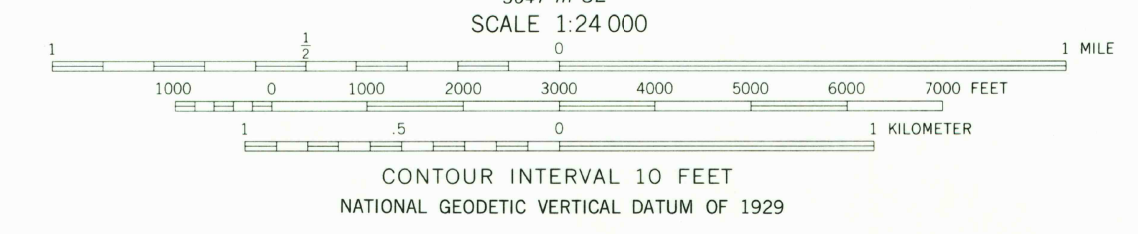
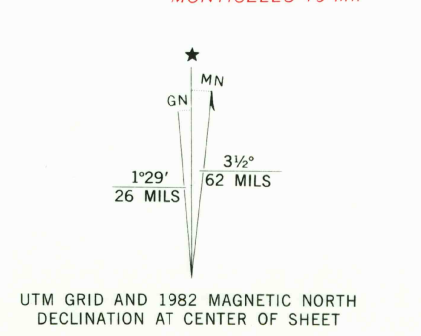


Mapped, edited, and published by the Geological Survey

Control by USGS and USC&GS  
Topography by photogrammetric methods from aerial photographs taken 1968-69. Field checked 1970  
Polyconic projection. 1927 North American datum  
10,000-foot grids based on Mississippi coordinate system, west and east zones  
1000-meter Universal Transverse Mercator grid ticks, zone 16, shown in blue  
Fine red dashed lines indicate selected fence and field lines where generally visible on aerial photographs. This information is un-checked

To place on the predicted North American Datum 1983 move the projection lines 15 meters south and 7 meters east as shown by dashed corner ticks

Revisions shown in purple compiled from aerial photographs taken 1980 and other sources. This information not field checked. Map edited 1982



THIS MAP COMPLIES WITH NATIONAL MAP ACCURACY STANDARDS FOR SALE BY U.S. GEOLOGICAL SURVEY, RESTON, VIRGINIA 22092  
A FOLDER DESCRIBING TOPOGRAPHIC MAPS AND SYMBOLS IS AVAILABLE ON REQUEST



ROAD CLASSIFICATION

Primary highway, all weather, hard surface	Light-duty road, all weather, improved surface
Secondary highway, all weather, hard surface	Unimproved road, fair or dry weather

U. S. Route (red circle with number)  
State Route (black circle with number)

RETURN TO:  
USGS AND HISTORICAL MAP ARCHIVES

MOUNT CARMEL, MISS.  
N3137.5-W8945.7.5

1970  
PHOTOREVISED 1982  
DMA 3047 III NE-SERIES V843

MAP 1  
PLATE 1000  
3047 III NE  
SCALE 1:24,000