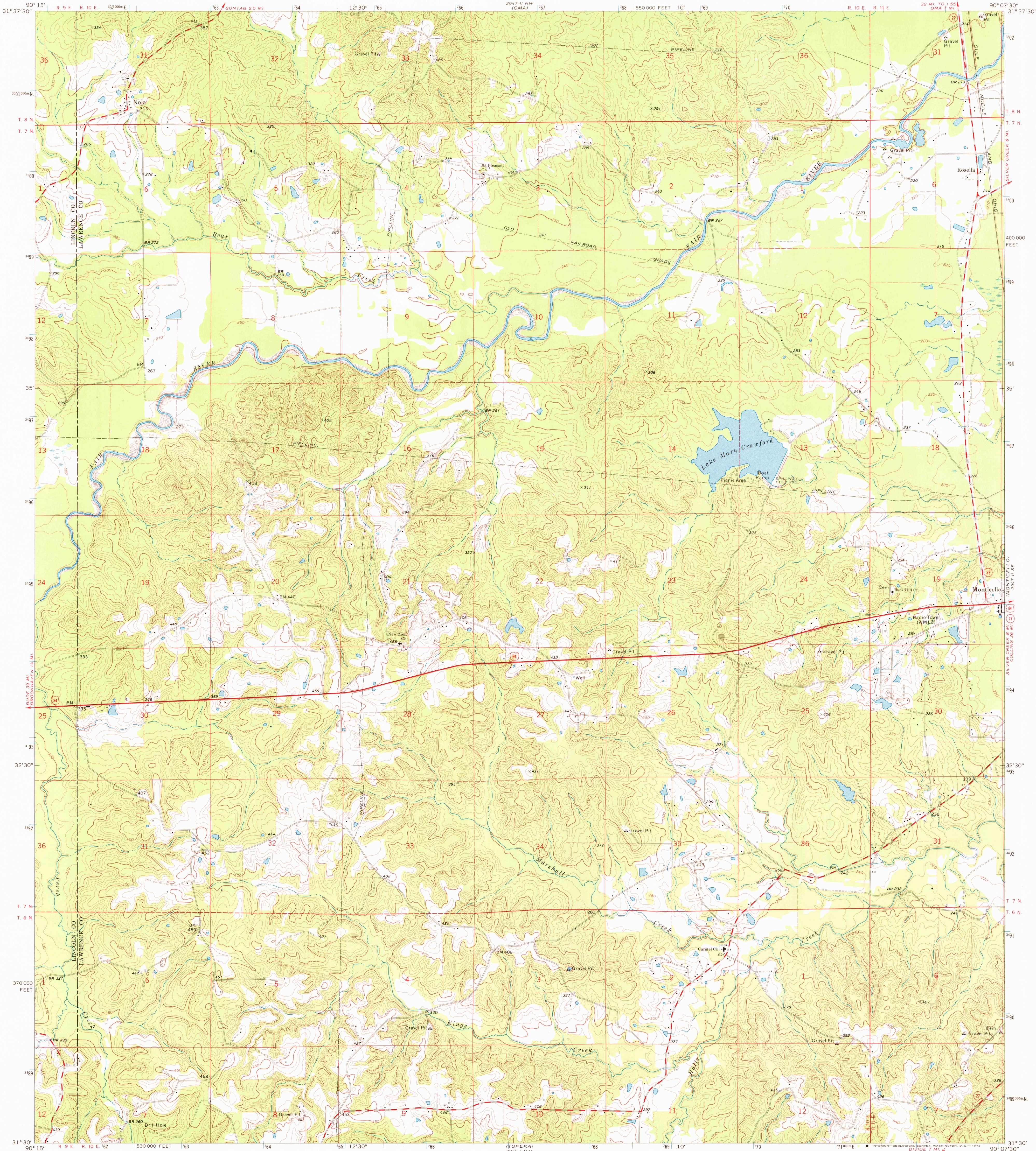


UNITED STATES  
DEPARTMENT OF THE INTERIOR  
GEOLOGICAL SURVEY

NOLA QUADRANGLE  
MISSISSIPPI  
7.5 MINUTE SERIES (TOPOGRAPHIC)



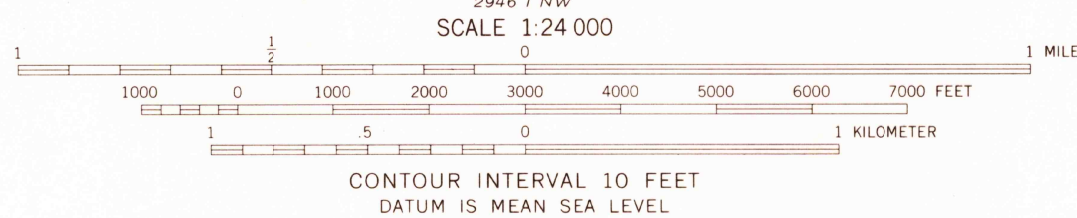
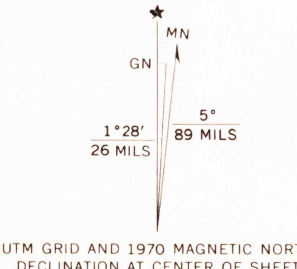
Mapped, edited, and published by the Geological Survey

Control by USGS and USC&GS

Topography by photogrammetric methods from aerial  
photographs taken 1968-69. Field checked 1970

Polyconic projection. 1927 North American datum  
10,000-foot grid based on Mississippi coordinate system, west zone  
1000-meter Universal Transverse Mercator grid ticks,  
zone 15, shown in blue

Fine red dashed lines indicate selected fence and field lines where  
generally visible on aerial photographs. This information is unchecked



Primary highway, all weather, Light-duty road, all weather,  
hard surface improved surface  
Secondary highway, all weather, Unimproved road, fair or dry  
hard surface weather  
U.S. Route State Route

NOLA, MISS.  
N3130-W9007.5/7.5

1970

JUL 3 1972

AMS 2947 II SW - SERIES V843  
HISTORICAL FILE  
TOPOGRAPHIC DIVISION