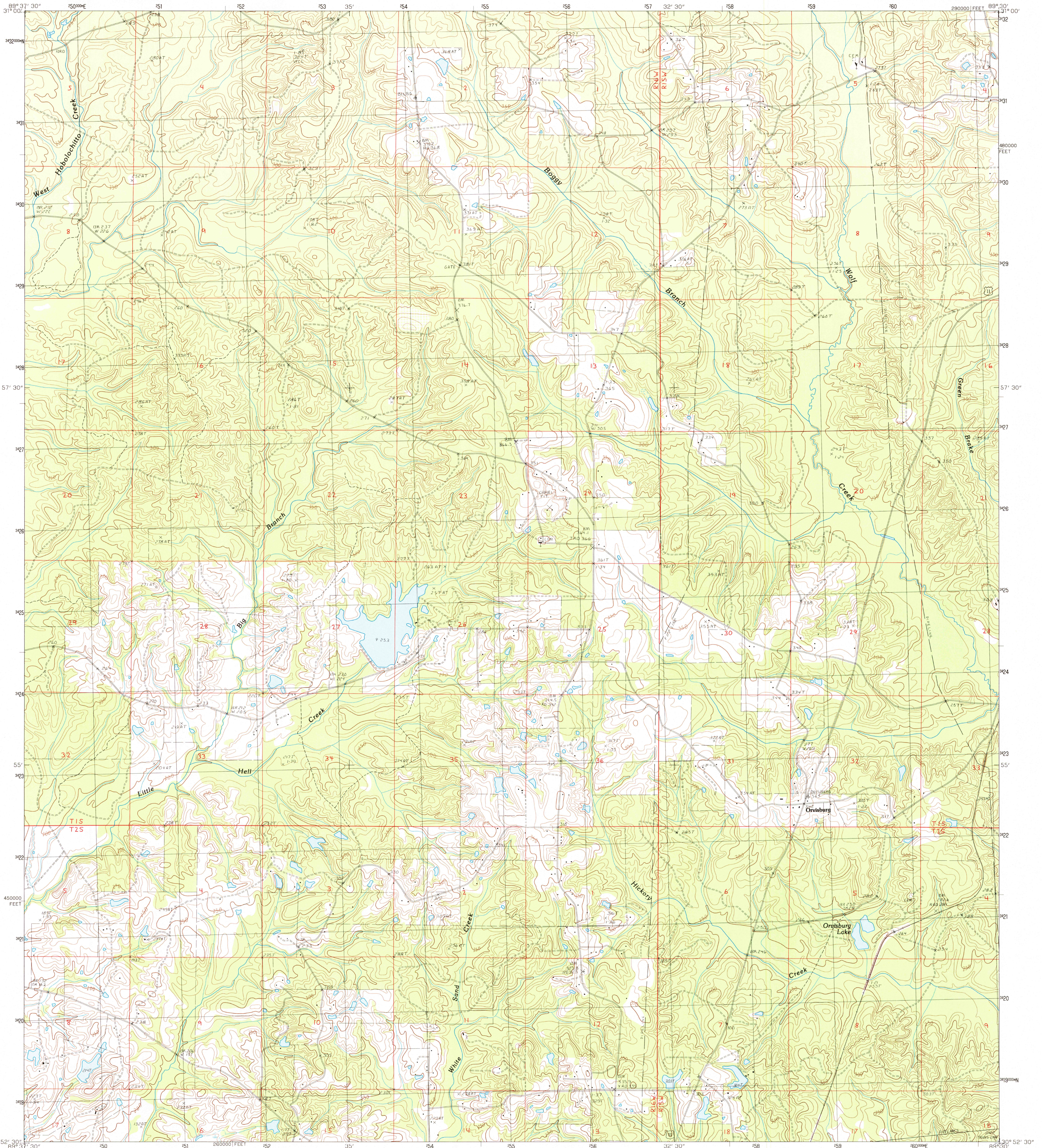


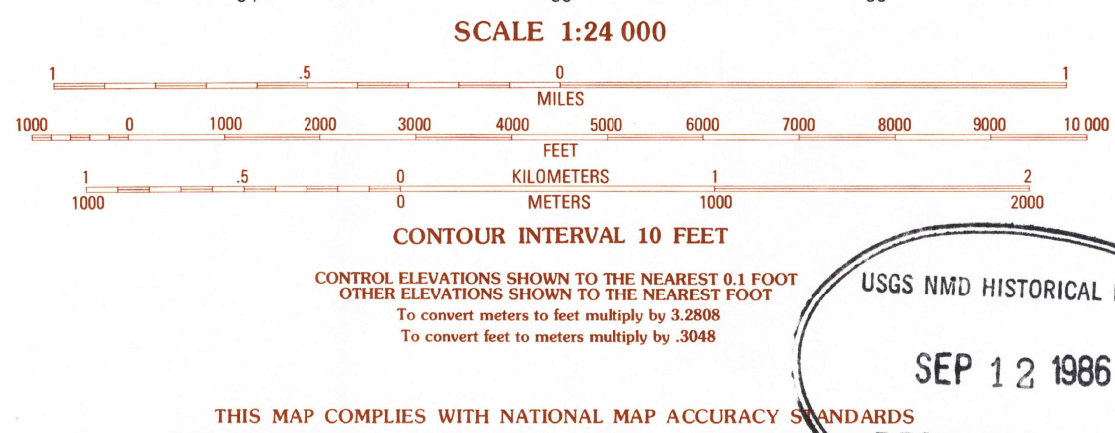
UNITED STATES  
DEPARTMENT OF THE INTERIOR  
GEOLOGICAL SURVEY

ORVISBURG QUADRANGLE  
MISSISSIPPI-PEARL RIVER CO.  
7.5 MINUTE SERIES (TOPOGRAPHIC)



PRODUCED BY THE UNITED STATES GEOLOGICAL SURVEY CONTROL BY USGS AND NOS/NOAA COMPILED FROM AERIAL PHOTOGRAPHS TAKEN 1982 FIELD CHECKED 1985. MAP EDITED 1986 PROJECTION TRANSVERSE MERCATOR GRID: 1000-METER UNIVERSAL TRANSVERSE MERCATOR 10,000-FOOT STATE GRID TICKS MISSISSIPPI EAST ZONE UTM GRID DECLINATION 111° WEST 1986 MAGNETIC NORTH DECLINATION 3°00' EAST VERTICAL DATUM NATIONAL GEODETIC VERTICAL DATUM OF 1929 HORIZONTAL DATUM 1927 NORTH AMERICAN DATUM To place on the predicted North American Datum of 1983, move the projection lines as shown by dashed corner ticks (17 meters south and 6 meters east) There may be private inholdings within the boundaries of any Federal and State reservations shown on this map No distinction made between houses, barns, and other buildings

**PROVISIONAL MAP**  
Produced from original manuscript drawings. Information shown as of date of photography.



ROAD LEGEND

Improved Road  
Unimproved Road  
Trail

Interstate Route U.S. Route State Route

QUADRANGLE LOCATION

1	2	3	1 Baxterville SW
4	5	2 Baxterville	3 Lumberton
6	7	4 Fords Creek	5 Hilldale
	8	6 White Sand	8 Poplarville
			8 Big Swamp

ADJOINING 7.5 QUADRANGLE NAMES

ORVISBURG, MISSISSIPPI  
PROVISIONAL EDITION 1986  
30089-HS-TF-024