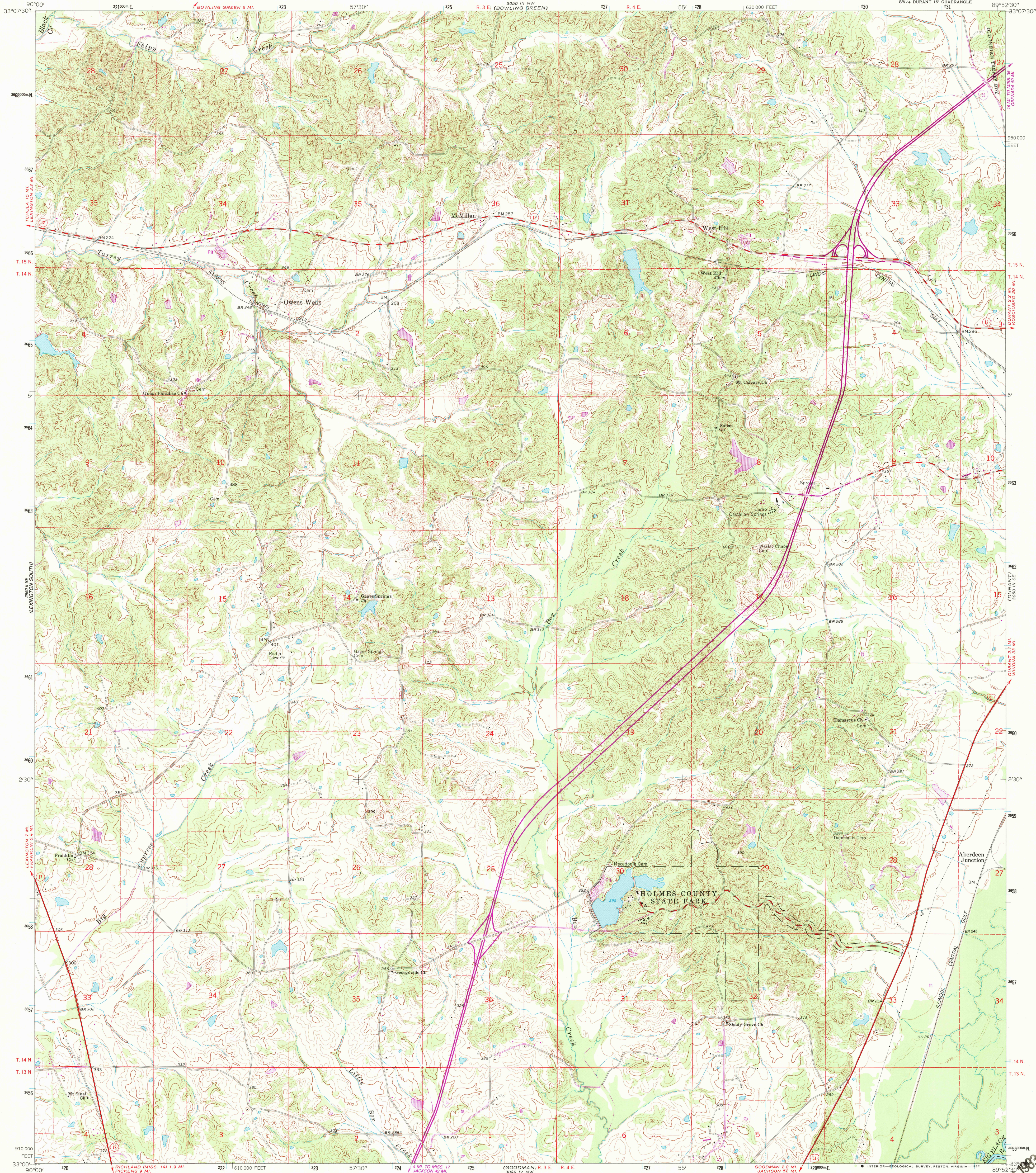


UNITED STATES
DEPARTMENT OF THE INTERIOR
GEOLOGICAL SURVEY

OWENS WELLS QUADRANGLE
MISSISSIPPI—HOLMES CO.
7.5 MINUTE SERIES (TOPOGRAPHIC)



Mapped, edited, and published by the Geological Survey
Control by USGS and USC&GS.

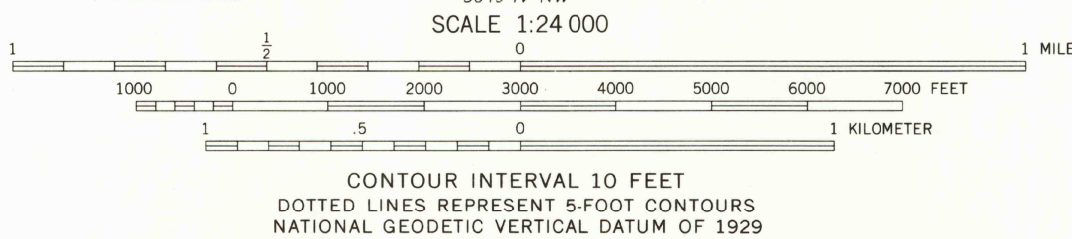
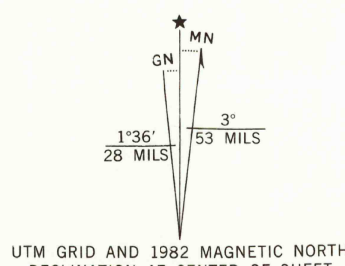
Topography by photogrammetric methods from aerial
photographs taken 1960 and planetable surveys 1964

Polyconic projection. 1927 North American datum
10,000-foot grid based on Mississippi coordinate system, west zone
1000-meter Universal Transverse Mercator grid ticks,
zone 16, shown in blue

To place on the predicted North American Datum 1983
move the projection lines 12 meters south and
7 meters east as shown by dashed corner ticks

There may be private inholdings within the boundaries of
the National or State reservations shown on this map

Revisions shown in purple compiled from aerial photographs taken 1981
and other sources. This information not field checked. Map edited 1982



ROAD CLASSIFICATION	
Primary highway, hard surface	Light-duty road, hard or improved surface
Secondary highway, hard surface	Unimproved road
Interstate Route	U. S. Route
	State Route

OWENS WELLS, MISS.
N3300—W8952.5/7.5
SW/4 DURANT 15' QUADRANGLE
1964
PHOTOREVISED 1982
DMA 3050 III SW—SERIES V843

RETURN TO:
USGS AND HISTORICAL MAP ARCHIVES