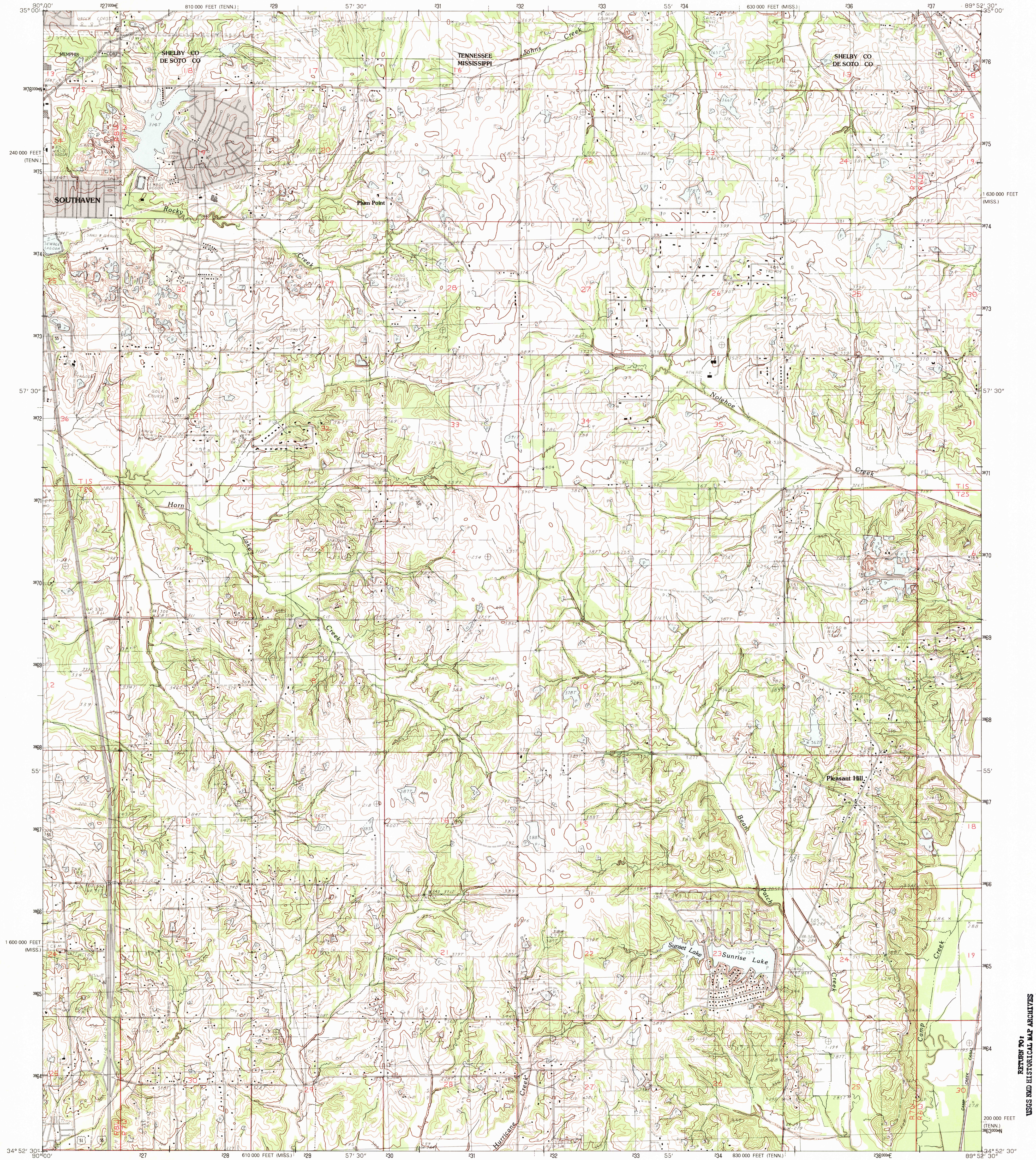


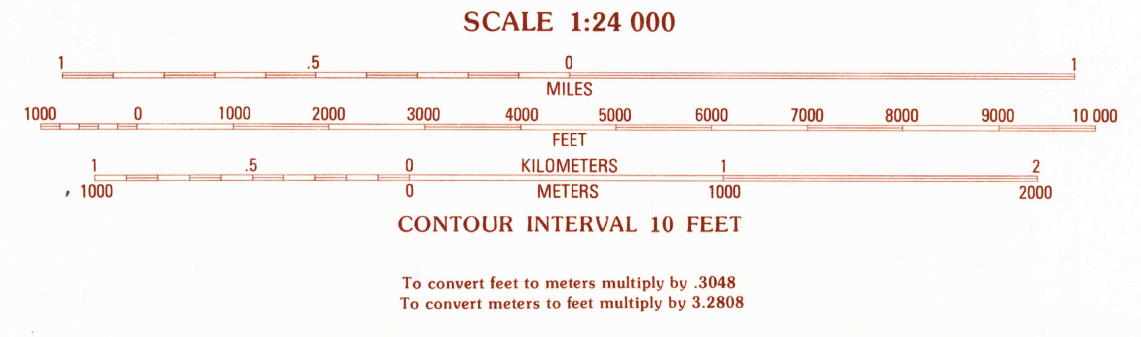
UNITED STATES
DEPARTMENT OF THE INTERIOR
GEOLOGICAL SURVEY

PLEASANT HILL QUADRANGLE
MISSISSIPPI-TENNESSEE
7.5 MINUTE SERIES (TOPOGRAPHIC)



PRODUCED BY THE UNITED STATES GEOLOGICAL SURVEY
CONTROL BY: 1. 1985 AND NOS/NOA
COMPILED FROM AERIAL PHOTOGRAPHS TAKEN: 1975
FIELD CHECKED: 1977. MAP EDITED: 1982
PROJECTION: TRANSVERSE MERCATOR
GRID: 1000-METER UNIVERSAL TRANSVERSE MERCATOR
10,000-FOOT STATE GRID TICS: MISSISSIPPI, WEST ZONE
TENNESSEE ZONE
UTM GRID DECLINATION: 1741 WEST
1982 MAGNETIC NORTH DECLINATION: 3° EAST
VERTICAL DATUM: NATIONAL GEODETIC VERTICAL DATUM OF 1929
HORIZONTAL DATUM: 1927 NORTH AMERICAN DATUM
To place on the predicted North American Datum of 1983,
move the projection lines as shown by dashed corner ticks
(8 meters south and 8 meters east)
Gray tint indicates area in which selected buildings are shown

PROVISIONAL MAP
Produced from original
manuscript drawings. Informa-
tion shown as of date of
field check.



THIS MAP COMPLIES WITH NATIONAL MAP ACCURACY STANDARDS
FOR SALE BY U. S. GEOLOGICAL SURVEY, RESTON, VIRGINIA 22092
AND TENNESSEE DIVISION OF GEOLOGY, NASHVILLE, TENNESSEE 37219

QUADRANGLE LOCATION

| | | | |
|---|---|---|---------------------|
| 1 | 2 | 3 | 1 Southwest Memphis |
| 2 | 3 | 4 | 2 Southeast Memphis |
| 3 | 4 | 5 | 3 Germantown |
| 4 | 5 | 6 | 4 Horn Lake |
| 5 | 6 | 7 | 5 Olive Branch |
| 6 | 7 | 8 | 6 Fries Corners |
| 7 | 8 | | 7 Hernando |
| 8 | | | 8 Louisville |

ADJOINING 7.5' QUADRANGLE NAMES

ROAD LEGEND
Improved Road
Unimproved Road
Trail
Interstate Route U. S. Route State Route
PLEASANT HILL, MISS.-TENN.
PROVISIONAL EDITION 1982
34089-H8-TF-024

APR 8 1983
2200

RETURN TO:
USGS NHD HISTORICAL MAP ARCHIVES