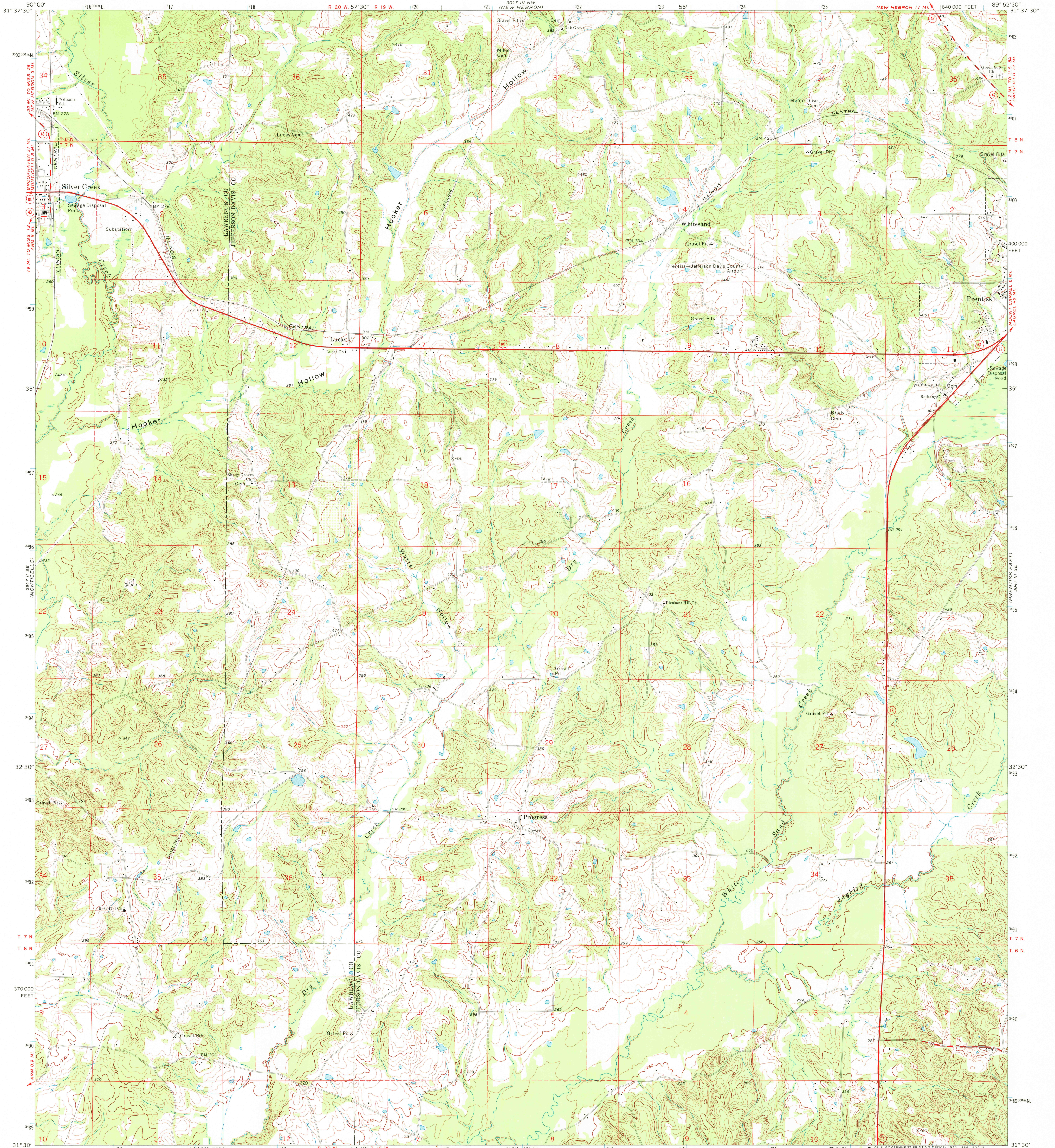
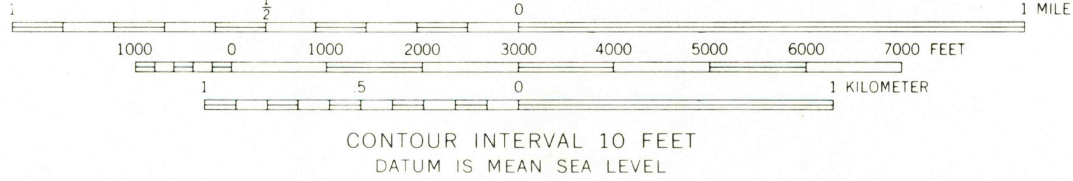
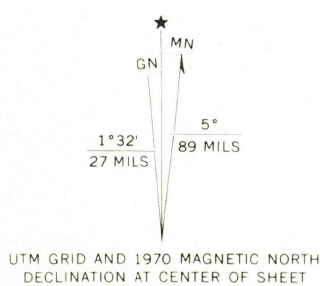


UNITED STATES
DEPARTMENT OF THE INTERIOR
GEOLOGICAL SURVEY

PRENTISS WEST QUADRANGLE
MISSISSIPPI
7.5 MINUTE SERIES (TOPOGRAPHIC)



Mapped, edited, and published by the Geological Survey
Control by USGS and US&GS
Topography by photogrammetric methods from aerial
photographs taken 1968-69-70. Field checked 1970
Polyconic projection. 1927 North American datum
10,000-foot grid based on Mississippi coordinate system, west zone
1000-meter Universal Transverse Mercator grid ticks,
zone 16, shown in blue
Fine red dashed lines indicate selected fence and field lines where
generally visible on aerial photographs. This information is unchecked



ROAD CLASSIFICATION
Primary highway, all weather, hard surface
Secondary highway, all weather, hard surface
Light-duty road, all weather, improved surface
Unimproved road, fair or dry weather
U. S. Route
State Route

PRENTISS WEST, MISS.
N3130-W8952.5/7.5

1970

AMS 3047 III SW-SERIES V843

USGS
HISTORICAL FILE
TOPOGRAPHIC DIVISION

FEB 2 1973