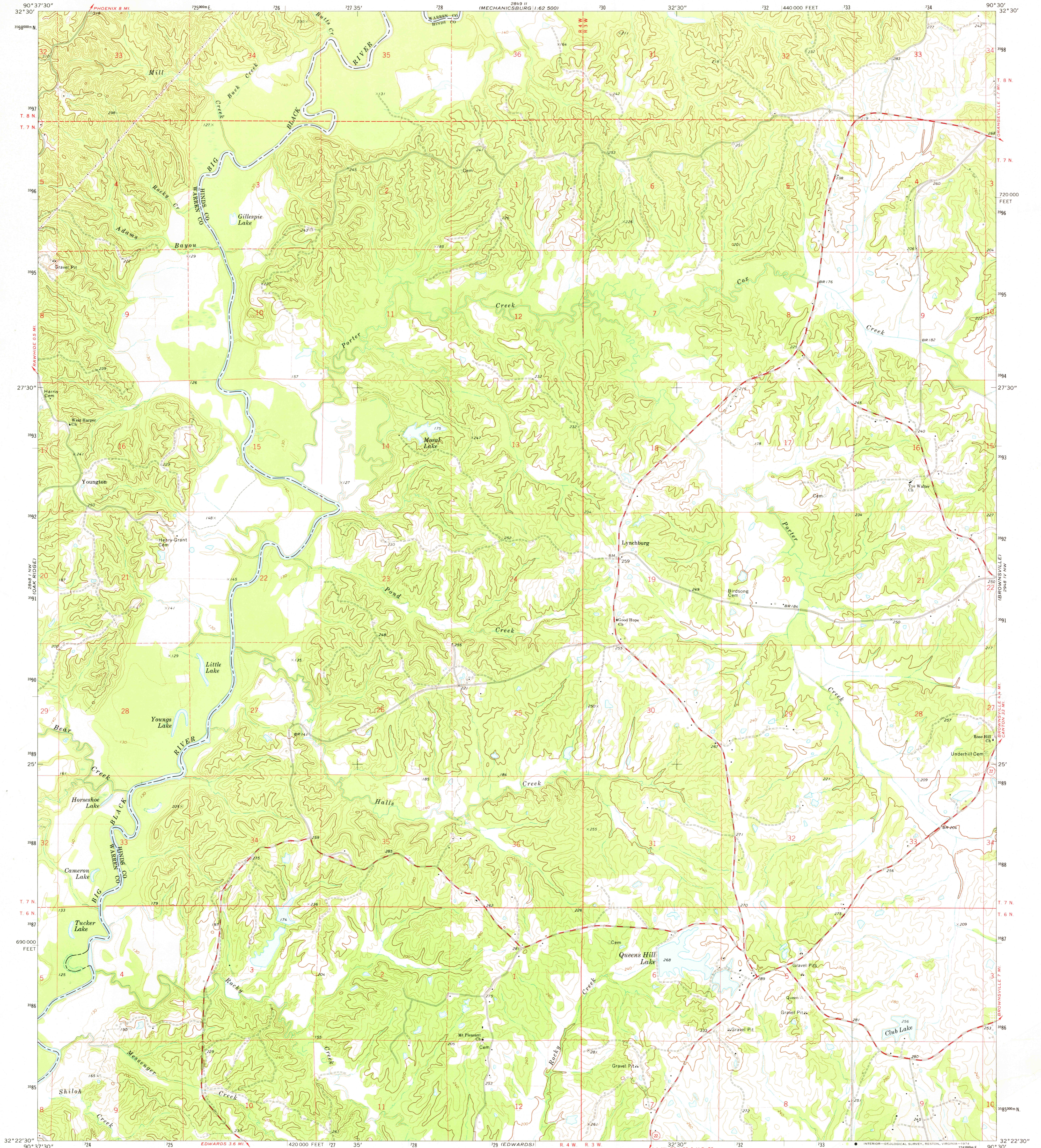
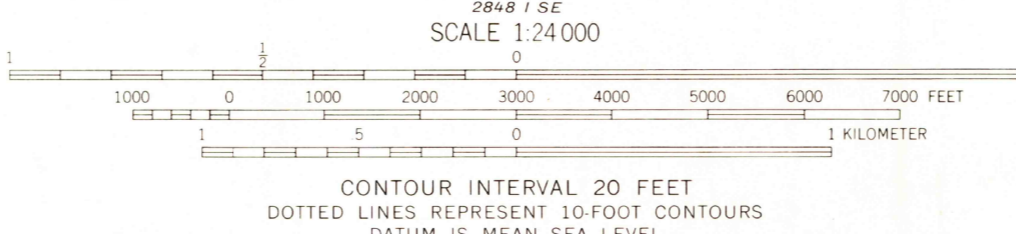
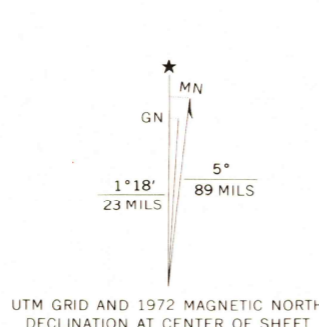


UNITED STATES
DEPARTMENT OF THE INTERIOR
GEOLOGICAL SURVEY

QUEENS HILL LAKE QUADRANGLE
MISSISSIPPI
7.5 MINUTE SERIES (TOPOGRAPHIC)
NE/4 EDWARDS 15' QUADRANGLE



Mapped, edited, and published by the Geological Survey
Control by USGS, USCGS, and USCE
Topography by photogrammetric methods from aerial
photographs taken 1971. Field checked 1972
Projection and 10,000-foot grid ticks: Mississippi coordinate
system, west zone (transverse Mercator)
1000-meter Universal Transverse Mercator grid ticks,
zone 15, shown in blue. 1927 North American datum
Fine red dashed lines indicate selected fence and field lines where
generally visible on aerial photographs. This information is unchecked



ROAD CLASSIFICATION
Primary highway, hard surface
Secondary highway, hard surface
Unimproved road
Interstate Route
U.S. Route
State Route

QUEENS HILL LAKE, MISS. OCT 07 1974
NE/4 EDWARDS 15' QUADRANGLE
N3222.5-W9030/7.5

USGS
Historical File
Topographic Division

1972
AMS 2848 1 NE-SERIES V843

THIS MAP COMPLIES WITH NATIONAL MAP ACCURACY STANDARDS
FOR SALE BY U.S. GEOLOGICAL SURVEY, RESTON, VIRGINIA 22092
A FOLDER DESCRIBING TOPOGRAPHIC MAPS AND SYMBOLS IS AVAILABLE ON REQUEST