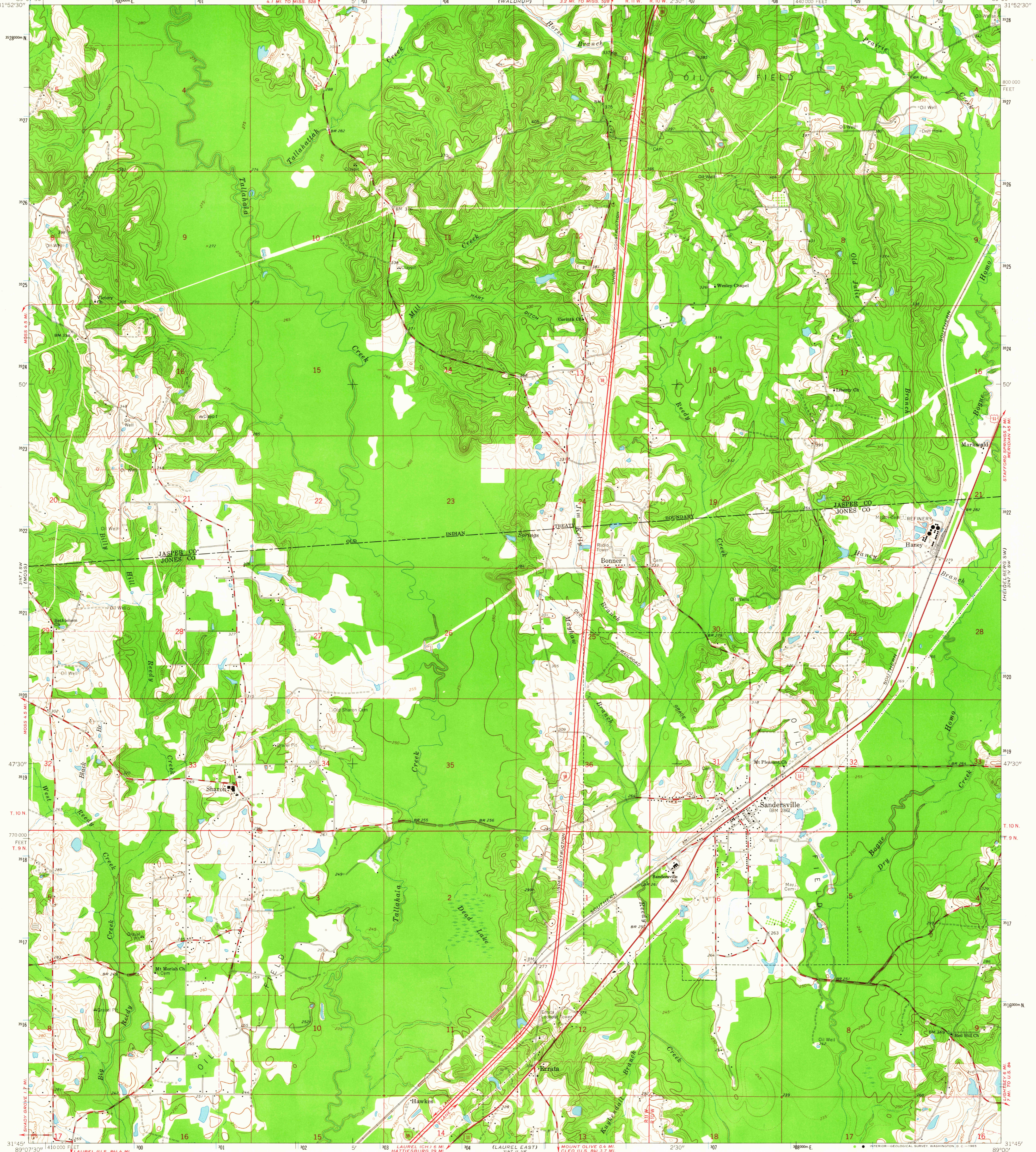


(LAUREL WEST)  
31°52'30" N  
89°07'30" W

UNITED STATES  
DEPARTMENT OF THE INTERIOR  
GEOLOGICAL SURVEY

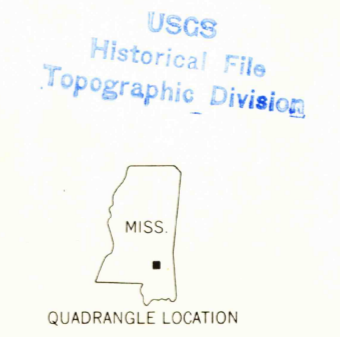
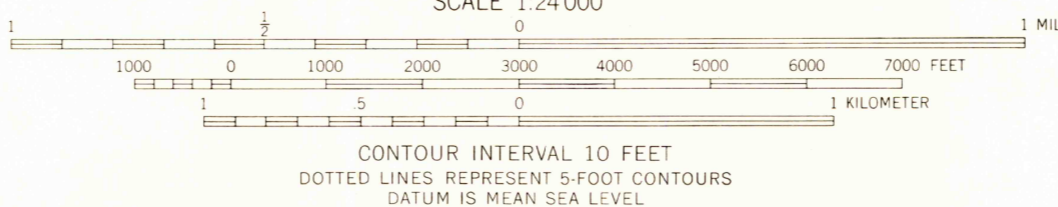
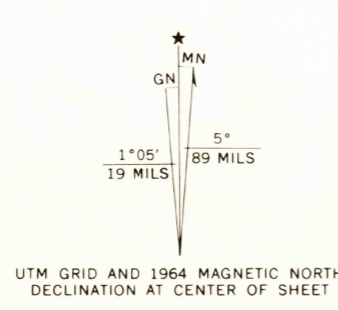
SANDERSVILLE QUADRANGLE  
MISSISSIPPI  
7.5 MINUTE SERIES (TOPOGRAPHIC)

(LAUREL EAST)  
31°52'30" N  
89°00' W



(LAUREL WEST)  
31°52'30" N  
89°07'30" W

Maped, edited, and published by the Geological Survey  
Control by USGS and USC&GS  
Topography by photogrammetric methods from aerial  
photographs taken 1960. Field checked 1964  
Polyconic projection. 1927 North American datum  
10,000-foot grid based on Mississippi coordinate system, east zone  
1000-meter Universal Transverse Mercator grid ticks,  
zone 16, shown in blue  
Fine red dashed lines indicate selected fence and field lines where  
generally visible on aerial photographs. This information is unchecked



| ROAD CLASSIFICATION |                 |
|---------------------|-----------------|
| Heavy-duty          | Light-duty      |
| Medium-duty         | Unimproved dirt |
| Interstate Route    | U.S. Route      |

SANDERSVILLE, MISS.  
N3145-W8900/7.5

1964  
AMS 3147 I SE-SERIES V843

THIS MAP COMPLIES WITH NATIONAL MAP ACCURACY STANDARDS  
FOR SALE BY U. S. GEOLOGICAL SURVEY, WASHINGTON 25, D. C.  
A FOLDER DESCRIBING TOPOGRAPHIC MAPS AND SYMBOLS IS AVAILABLE ON REQUEST

APR 26 1965  
2005