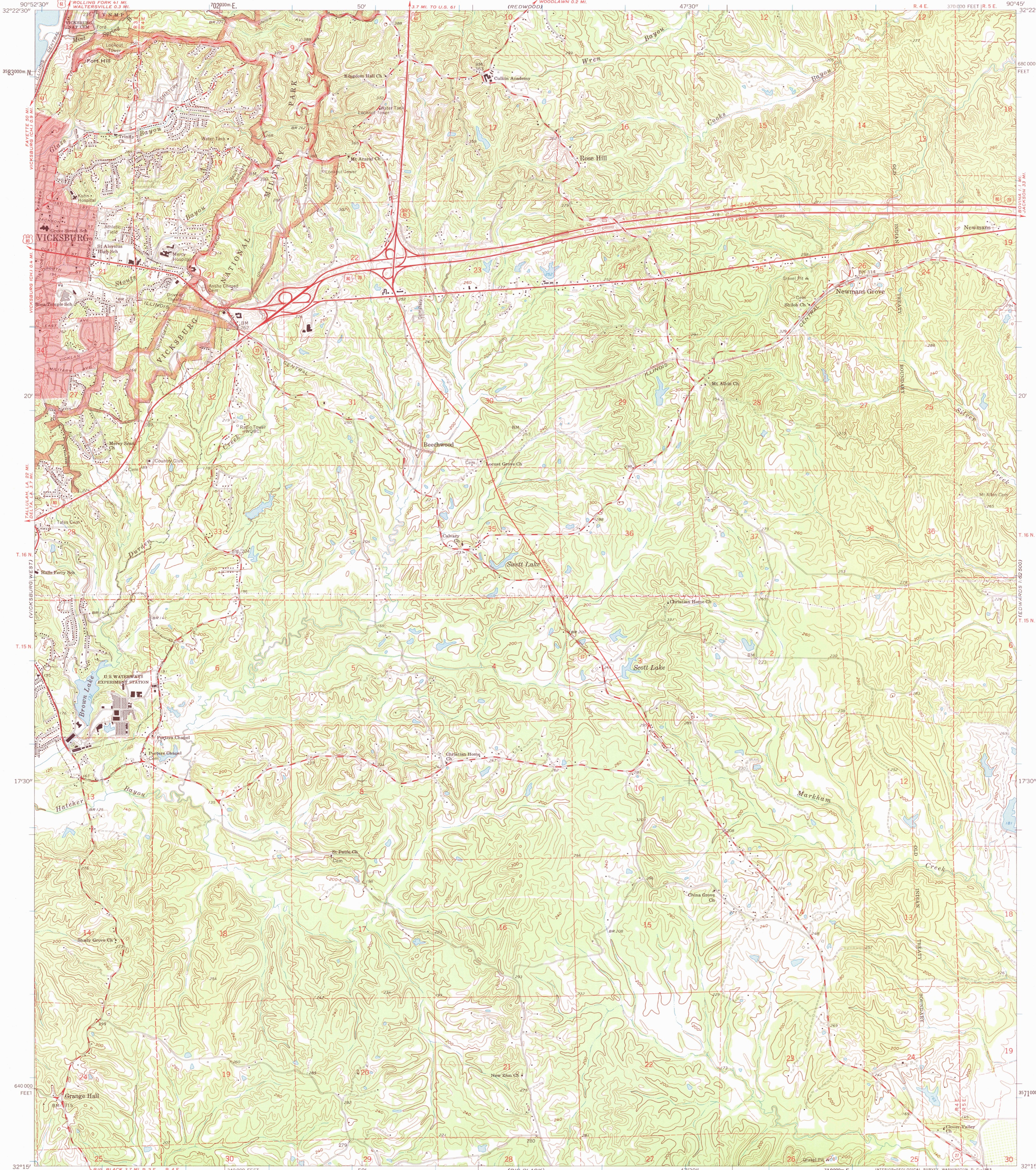


UNITED STATES
DEPARTMENT OF THE INTERIOR
GEOLOGICAL SURVEY

VICKSBURG EAST QUADRANGLE
MISSISSIPPI—WARREN CO.
7.5 MINUTE SERIES (TOPOGRAPHIC)
SE 1/4 VICKSBURG 15' QUADRANGLE



Mapped, edited, and published by the Geological Survey
Control by USGS, USC&GS, and USCE
Topography by photogrammetric methods from aerial
photographs taken 1961-62, and in part by the City of Vicksburg
Field checked 1962
Polyconic projection. 1927 North American datum
10,000-foot grid based on Mississippi coordinate system, west zone
1000-meter Universal Transverse Mercator grid ticks,
zone 15, shown in blue
Red tint indicates area in which only landmark buildings are shown
Fine red dashed lines indicate selected fence and field lines where
generally visible on aerial photographs. This information is unchecked

TRUE NORTH
MAGNETIC NORTH
APPROXIMATE MEAN
DECLINATION, 1962

SCALE 1:24,000
CONTOUR INTERVAL 20 FEET
DATUM IS MEAN SEA LEVEL

APR 30 1997
REC'D FILE COPY

MISS.
QUADRANGLE LOCATION

ROAD CLASSIFICATION
Heavy-duty ——— Light-duty ———
Medium-duty ——— Unimproved dirt ———
Interstate Route U.S. Route State Route

VICKSBURG EAST, MISS.
SE 1/4 VICKSBURG 15' QUADRANGLE
N 3215—W 9045/7.5

1962

ISBN 0-607-29261-1
9 780607 292619