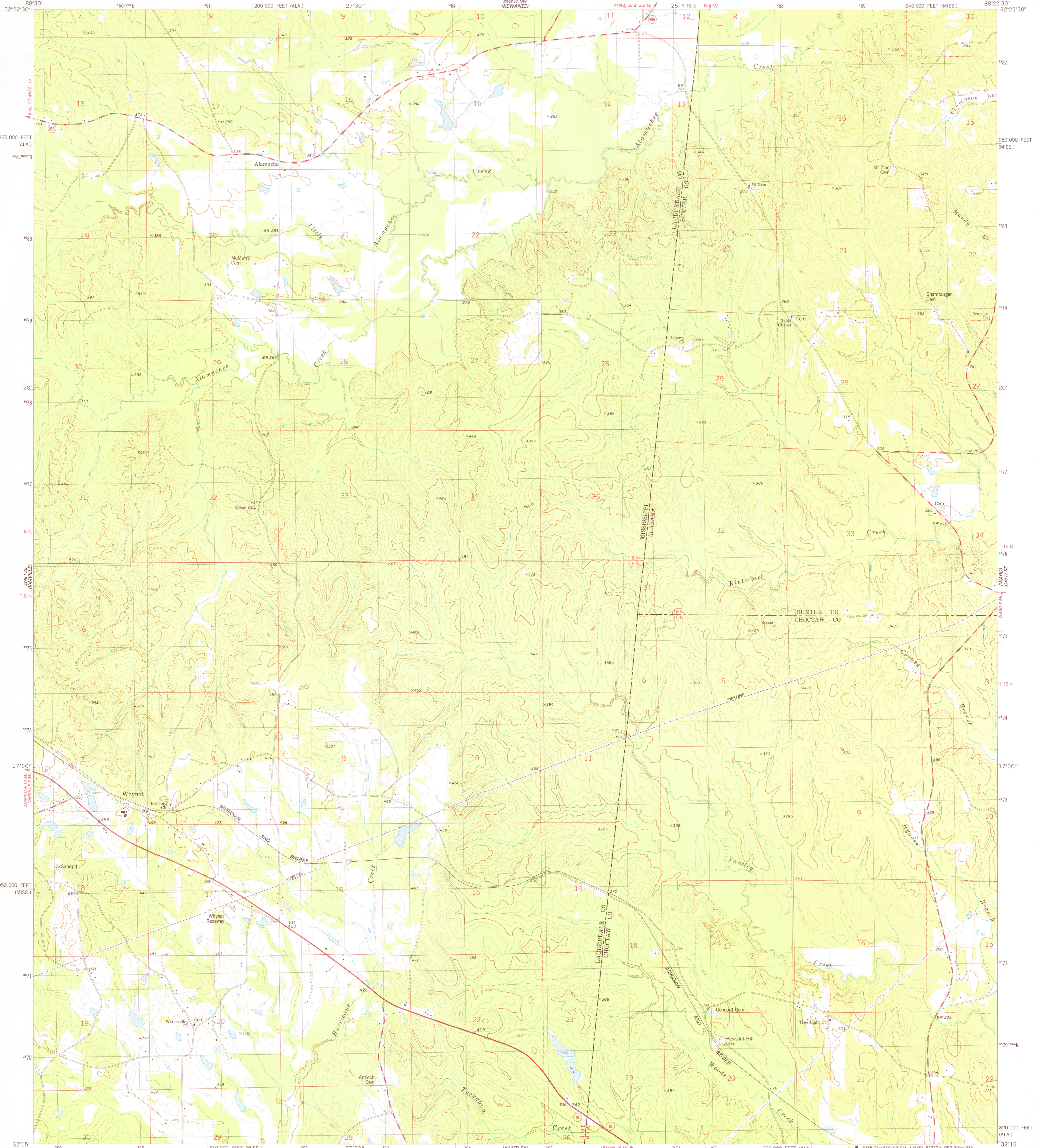


32° 22' 30" N  
88° 30' W

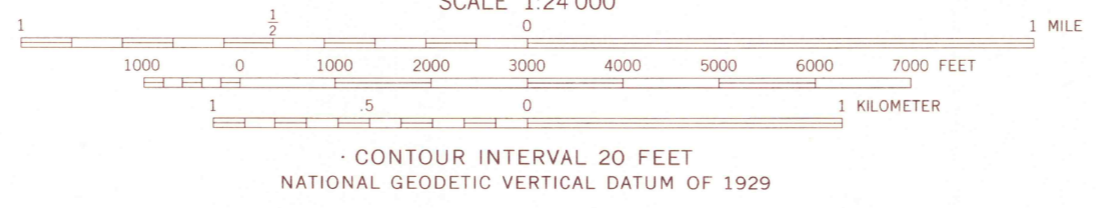
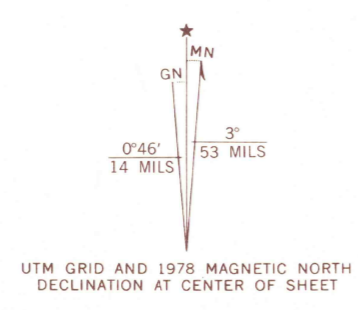
UNITED STATES  
DEPARTMENT OF THE INTERIOR  
GEOLOGICAL SURVEY

WHYNOT QUADRANGLE  
MISSISSIPPI-ALABAMA  
7.5 MINUTE SERIES (TOPOGRAPHIC)

32° 22' 30" N  
88° 30' W



Mapped, edited, and published by the Geological Survey  
Control by USGS and NOS/NOAA  
Topography by photogrammetric methods from aerial photographs taken 1973. Field checked 1974. Map edited 1978  
Projection: Mississippi coordinate system, east zone (transverse Mercator)  
10,000-foot grid ticks based on Mississippi coordinate system, east zone, and Alabama coordinate system, west zone  
1000-meter Universal Transverse Mercator grid, zone 16  
1927 North American datum  
Fine red dashed lines indicate selected fence and field lines where generally visible on aerial photographs. This information is unchecked



ROAD CLASSIFICATION

Primary highway, hard surface	Light-duty road, hard or improved surface
Secondary highway, hard surface	Unimproved road
Interstate Route	U. S. Route
	State Route

THIS MAP COMPLIES WITH NATIONAL MAP ACCURACY STANDARDS FOR SALE BY U. S. GEOLOGICAL SURVEY, RESTON, VIRGINIA 22092 A FOLDER DESCRIBING TOPOGRAPHIC MAPS AND SYMBOLS IS AVAILABLE ON REQUEST

USGS  
Historical File  
Topographic Division  
WHYNOT, MISS.—ALA.  
N3215 — W822.5/7.5  
1978  
AMS 3348 IV SW—SERIES V843

DEC 21 1978  
2000