

Prepared by the Army Map Service (AJEF), Corps of Engineers, U. S. Army, Washington, D. C. Compiled in 1954 by photogrammetric methods. Horizontal and vertical control by USL&GS, USGS, and CE. Aerial photography 1952. Photography field annotated 1953.

100,000-foot grids based on Mississippi coordinate system, east and west zones and Alabama coordinate system, west zone

10,000 meter Universal Transverse Mercator grid ticks, zone 16, shown in blue

**LEGEND**

**ROAD DATA 1953**

Figures in red denote approximate distances in miles between stars

**ROADS**

- Hard surface, heavy duty
- Two lanes wide; Federal route marker
- Hard surface, medium duty
- More than two lanes wide
- Two lanes wide; State route marker
- Improved light duty
- Unimproved dirt
- Trail

**POPULATED PLACES**

- Over 500,000
- 100,000 to 500,000
- 25,000 to 100,000
- 5,000 to 25,000
- 1,000 to 5,000
- Less than 1,000

**RAILROADS**

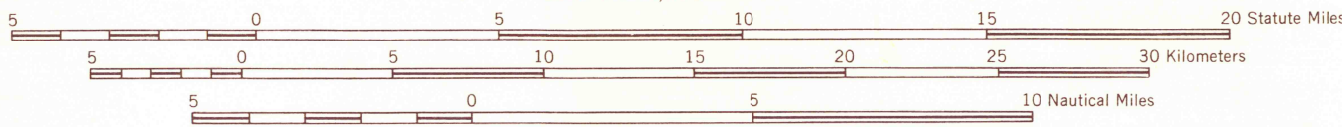
- Standard gauge
- Narrow gauge
- Interurban
- State
- County
- Park or reservation

**BOUNDARIES**

- Landplane airport
- Landing area
- Seaplane airport
- Seaplane anchorage
- Woods-brushwood

**LANDMARKS: School; Church; Other**

- Horizontal control point
- Spot elevation in feet
- Marsh or swamp
- Intermittent or dry stream
- Power line



CONTOUR INTERVAL 50 FEET

TRANSVERSE MERCATOR PROJECTION

1955 MAGNETIC DECLINATION FOR THIS SHEET VARIES FROM 5°10' EASTERLY FOR THE CENTER OF THE WEST LONG TO 4°00' EASTERLY FOR THE CENTER OF THE EAST EDGE. MEAN ANNUAL CHANGE IS 0°10' WESTERLY.

FOR SALE BY U. S. GEOLOGICAL SURVEY, WASHINGTON 25, D. C.

LOCATION DIAGRAM FOR NI 16-7

NI 15-2 REBELLEVILLE ARKANSAS	NI 15-3 HELEN ARKANSAS	NI 16-1 MEMPHIS TENNESSEE	NI 16-2 TUPLO MISSISSIPPI	NI 16-3 COLUMBIA MISSISSIPPI	NI 16-4 GADSDEN ALABAMA	NI 16-5 BIRMINGHAM ALABAMA	NI 16-6 TOMBIGBE MISSISSIPPI	NI 16-7 WEST POINT MISSISSIPPI	NI 16-8 LOUISIANA	NI 16-9 MISSISSIPPI	NI 16-10 MISSISSIPPI	NI 16-11 MISSISSIPPI	NI 16-12 MISSISSIPPI	NI 16-13 MISSISSIPPI	NI 16-14 MISSISSIPPI	NI 16-15 MISSISSIPPI	NI 16-16 MISSISSIPPI	NI 16-17 MISSISSIPPI	NI 16-18 MISSISSIPPI	NI 16-19 MISSISSIPPI	NI 16-20 MISSISSIPPI	NI 16-21 MISSISSIPPI	NI 16-22 MISSISSIPPI	NI 16-23 MISSISSIPPI	NI 16-24 MISSISSIPPI	NI 16-25 MISSISSIPPI	NI 16-26 MISSISSIPPI	NI 16-27 MISSISSIPPI	NI 16-28 MISSISSIPPI	NI 16-29 MISSISSIPPI	NI 16-30 MISSISSIPPI
-------------------------------------	------------------------------	---------------------------------	---------------------------------	------------------------------------	-------------------------------	----------------------------------	------------------------------------	--------------------------------------	----------------------	------------------------	-------------------------	-------------------------	-------------------------	-------------------------	-------------------------	-------------------------	-------------------------	-------------------------	-------------------------	-------------------------	-------------------------	-------------------------	-------------------------	-------------------------	-------------------------	-------------------------	-------------------------	-------------------------	-------------------------	-------------------------	-------------------------

USGS  
Historical File  
Topographic Division

INTERIOR—GEOLOGICAL SURVEY, WASHINGTON, D. C.—1963—NS  
MR 8435

TOWNSHIP OR RANGE LINE

LAND GRANT BOUNDARY

SECTIONIZED TOWNSHIP

6	5	4	3	2	1
7	8	9	10	11	12
13	14	15	16	17	18
19	20	21	22	23	24
25	26	27	28	29	30
31	32	33	34	35	36

USGS  
Topographic Division

WEST POINT, MISS. ALA.

Aug - 6 1953

3650