

TOPOGRAPHY

STATE OF MISSISSIPPI

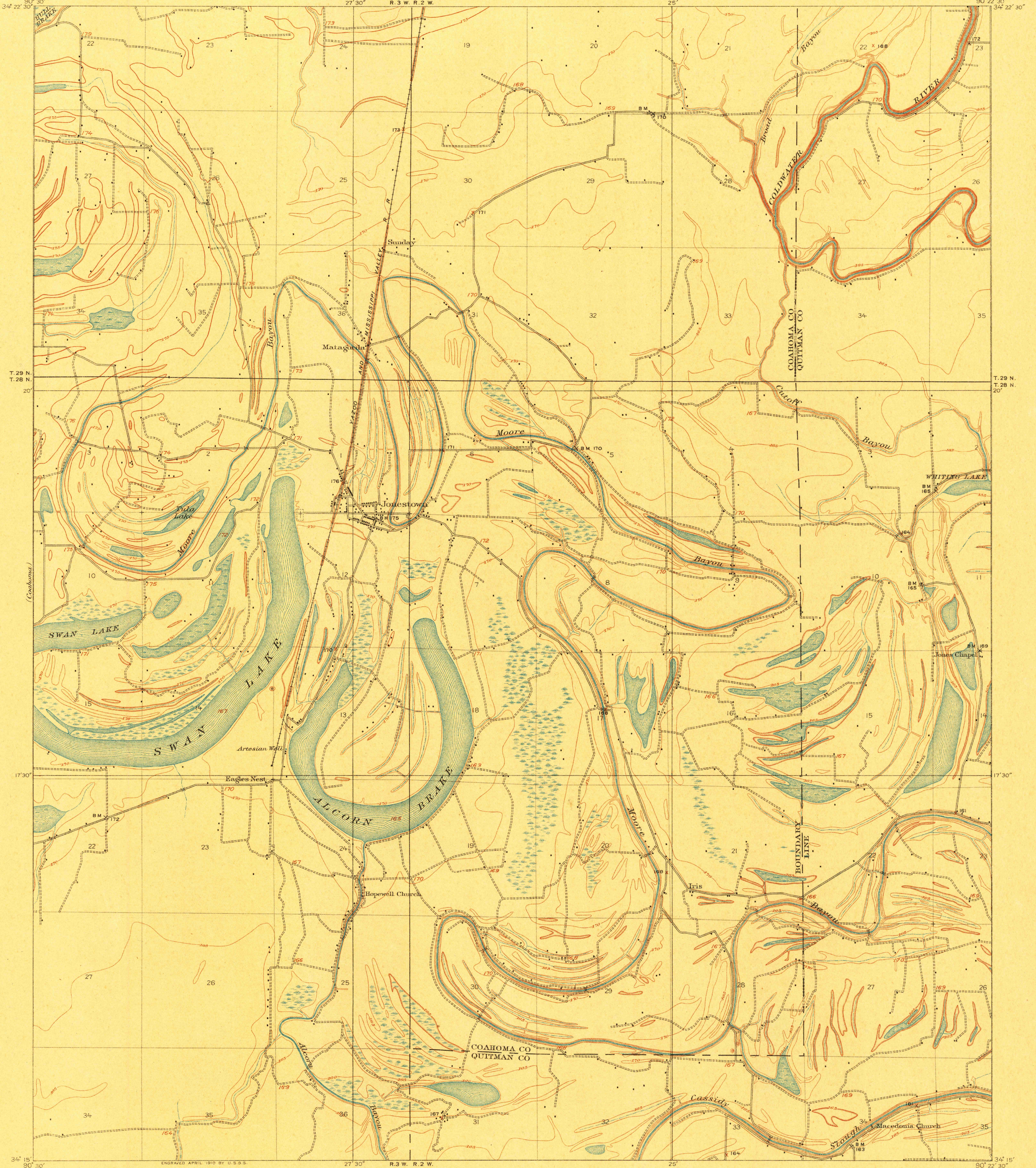
E. F. NOEL, GOVERNOR

H. W. CRENSHAW, PRESIDENT T. G. DABNEY, CHIEF ENGINEER

TALLAHATCHEE DRAINAGE COMMISSION

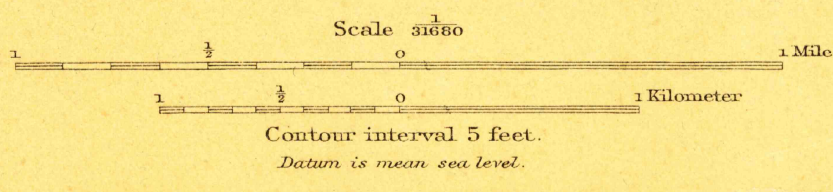
U.S. GEOLOGICAL SURVEY
GEORGE OTIS SMITH, DIRECTOR

MISSISSIPPI
JONESTOWN QUADRANGLE



ENGRAVED APRIL 1910 BY U.S.G.S.
R. B. Marshall, Chief Geographer.
Frank Sutton, Geographer in charge.
Topography by S. P. Floore, L. L. Lee, J. R. McMillen,
and R. J. Schleich.
Control by C. A. Clunet, W. H. Gray, and N. S. Rorison.
Surveyed in 1908.

Schleich	T
Lee	
McMillen	



TRUE NORTH
MAGNETIC NORTH
APPROXIMATE MEAN
DECLINATION 1908.

Edition of Aug. 1910.

JONESTOWN MISS.