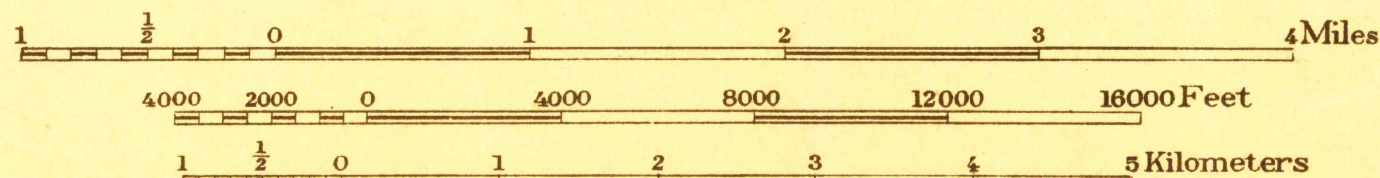


Advance sheet.  
Subject to correction.

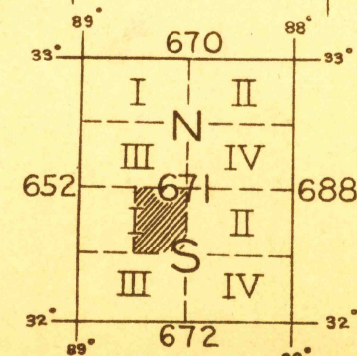


C. H. Birdseye, Chief Topographic Engineer  
Frank Sutton, Division Topographic Engineer  
Hersey Munroe, Topographic Engineer in charge  
Topography by B. A. Jenkins, E. V. Parkinson and W. S. Beames.  
Control by H. S. Senseney and E. E. Harris.  
Surveyed in 1920-1921.  
SURVEYED IN COOPERATION WITH THE STATE OF MISSISSIPPI

Jenkins
Beames



Contour interval 20 feet.  
Datum is mean sea level.



**HISTORICAL FILES**  
(DO NOT REMOVE)

MERIDIAN  
**FILE COPY**

RETURN TO CENTRAL FILE

APPROXIMATE MEAN  
DECLINATION 1921.