

DEPARTMENT OF THE INTERIOR
ALBERT B. FALL, SECRETARY
U. S. GEOLOGICAL SURVEY
GEORGE OTIS SMITH, DIRECTOR

669-S-1-E/2 TOPOGRAPHY

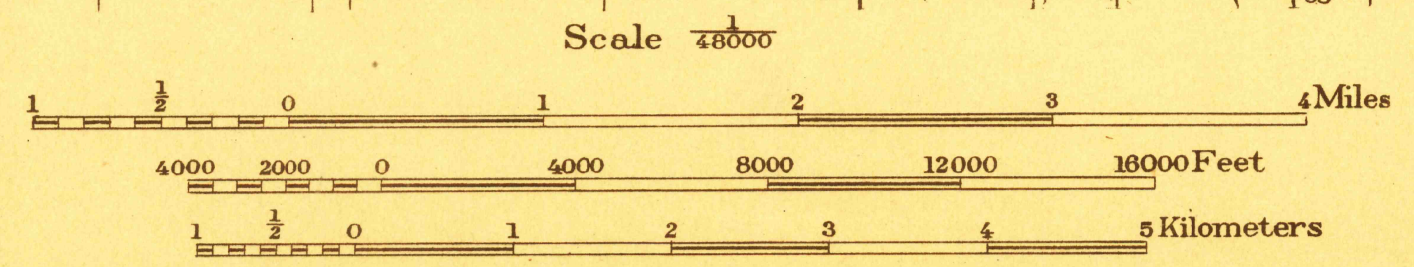
STATE OF MISSISSIPPI
GEOLOGICAL SURVEY
E. N. LOWE, DIRECTOR

Advance sheet.
Subject to correction.

MISSISSIPPI
TUPELO QUADRANGLE

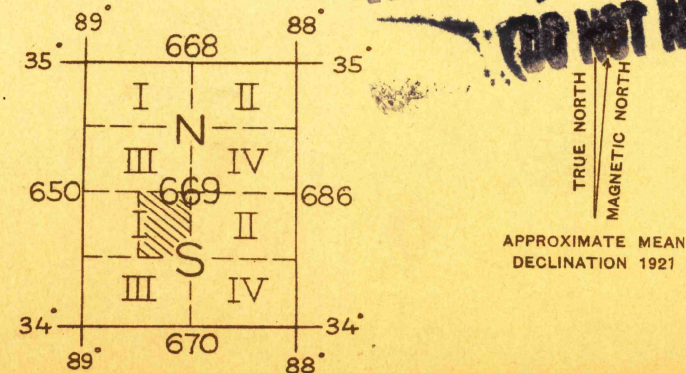


C. H. Birdseye, Chief Topographic Engineer.
Frank Sutton, Division Topographic Engineer.
Hersey Munroe, Topographic Engineer in charge.
Topography by E.V. Perkinson and J.C. Hilliard.
Control by U.S. Coast and Geodetic Survey,
H.S. Senseney, and F.J. McMaugh.
Surveyed in 1920-1921.



Contour interval 20 feet.
Datum is mean sea level.

HISTORICAL FILES
DO NOT REMOVE
FILE COPY
RETURN TO CENTRAL FILE



TUPELO
Edition of 1921

SURVEYED IN COOPERATION WITH THE STATE OF MISSISSIPPI