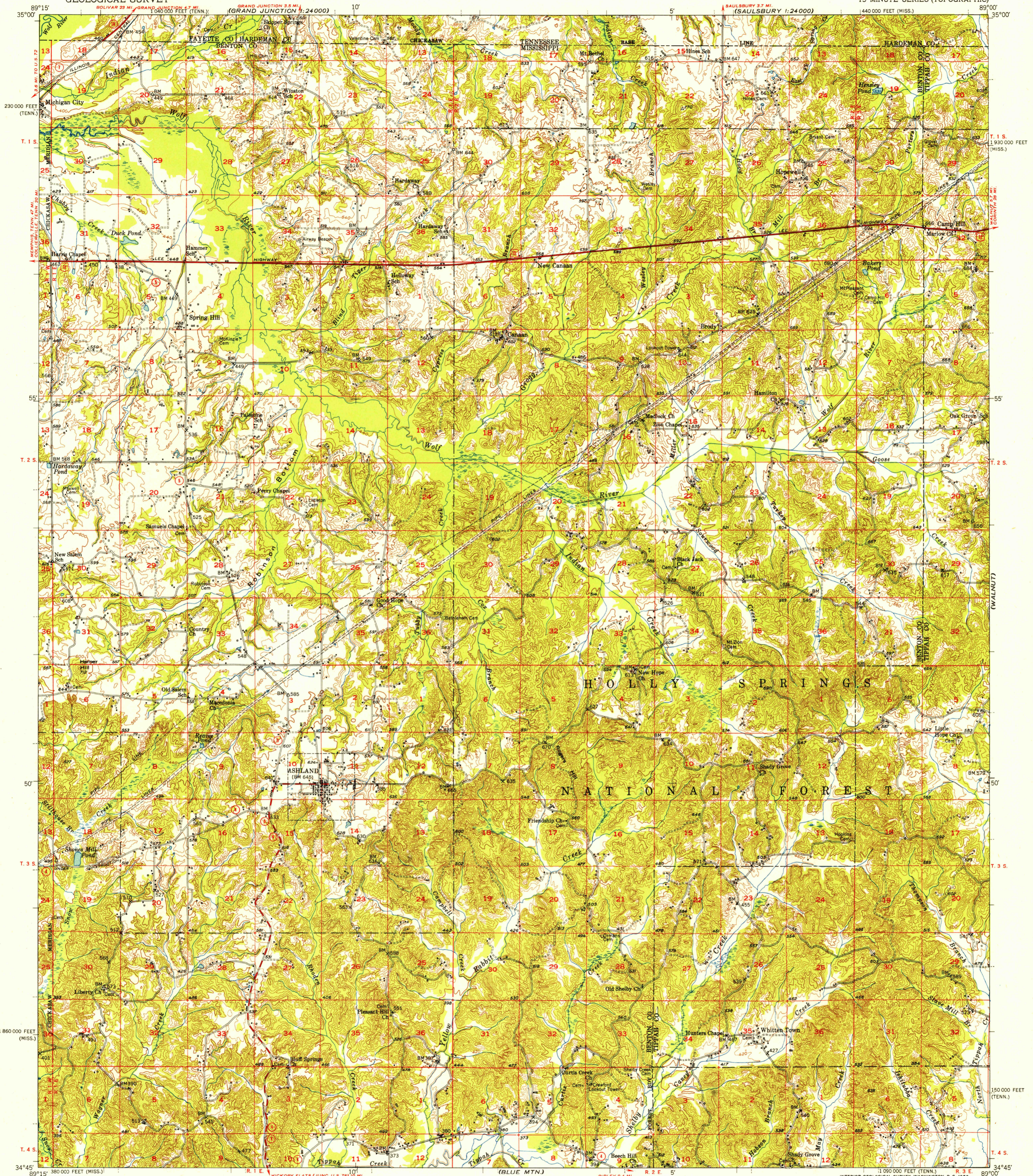


UNITED STATES  
DEPARTMENT OF THE INTERIOR  
GEOLOGICAL SURVEY

U.S.G.S.  
FILE COPY

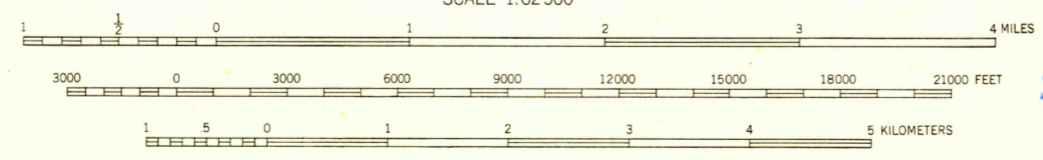
ASHLAND QUADRANGLE  
MISSISSIPPI-TENNESSEE  
15 MINUTE SERIES (TOPOGRAPHIC)

(MIDDLETON)  
1:24000



Mapped, edited, and published by the Geological Survey  
Control by USGS, USC&GS, and USCE  
Topography from aerial photographs by Kesh plotter  
Aerial photographs taken 1947. Field check 1950  
Polyconic projection. 1927 North American datum  
10,000-foot grids based on Mississippi coordinate system,  
east zone, and Tennessee coordinate system

TRUE NORTH  
MAGNETIC NORTH  
APPROXIMATE MEAN  
DECLINATION, 1950



CONTOUR INTERVAL 20 FEET  
DATUM IS MEAN SEA LEVEL

THIS MAP COMPLIES WITH NATIONAL MAP ACCURACY STANDARDS  
FOR SALE BY U. S. GEOLOGICAL SURVEY, WASHINGTON 25, D. C.  
AND TENNESSEE DIVISION OF GEOLOGY, NASHVILLE, TENN.  
A FOLDER DESCRIBING TOPOGRAPHIC MAPS AND SYMBOLS IS AVAILABLE ON REQUEST

USGS  
Historical File  
Topographic Division

U.S.G.S.  
FILE COPY

ROAD CLASSIFICATION  
Heavy-duty 4 LANE 6 LANE Light-duty  
Medium-duty 4 LANE 6 LANE Unimproved dirt  
U. S. Route State Route

ASHLAND, MISS.-TENN.  
N3445-W8900/15

1950

AUG 26 1952

2120