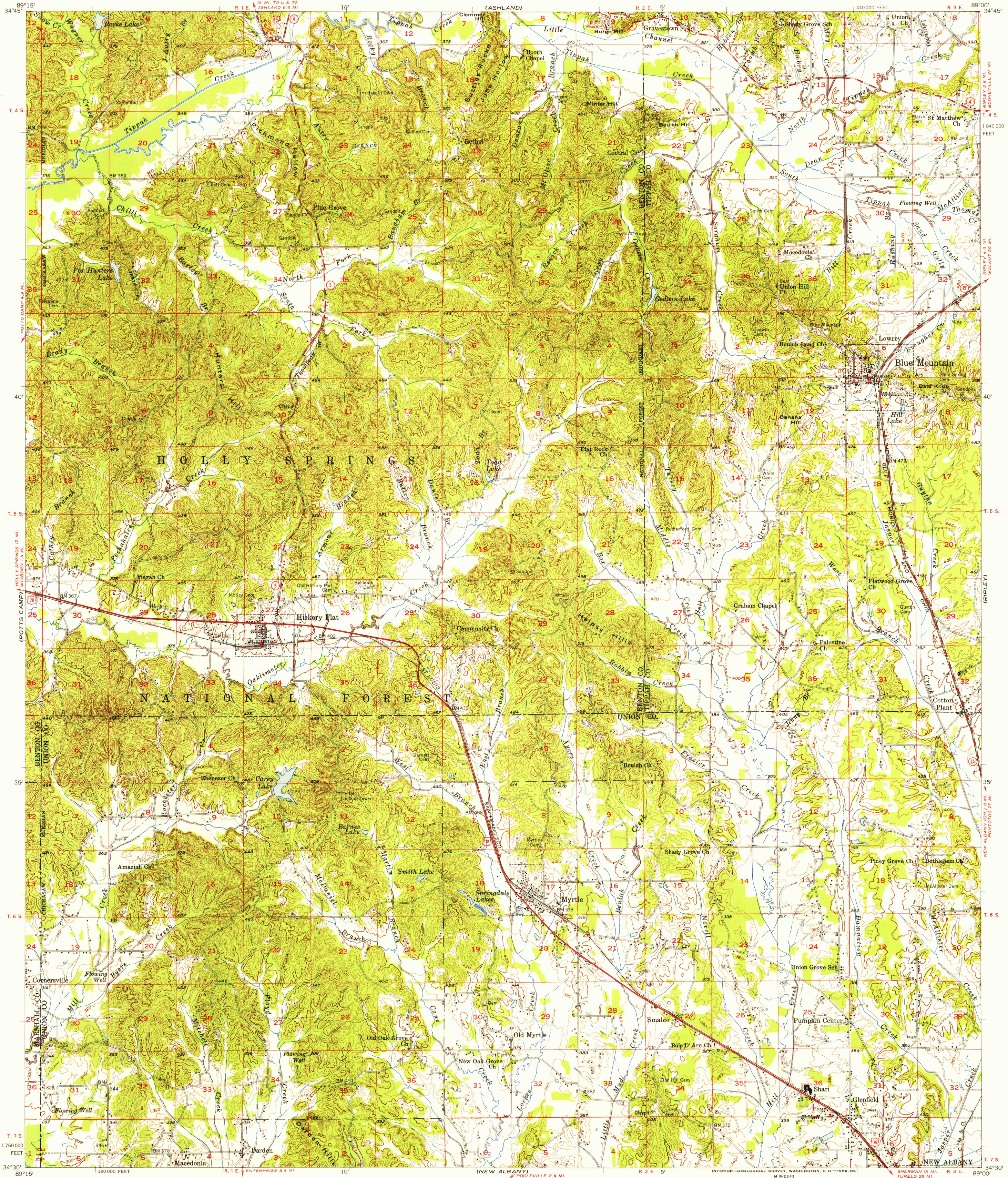


(HOLLY SPRINGS)

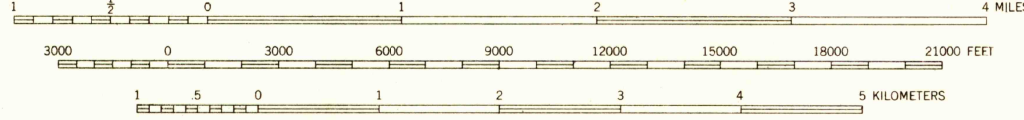
(WALNUT)



Mapped, edited, and published by the Geological Survey

Control by USGS and USC&GS
Topography from aerial photographs by photogrammetric methods
Aerial photographs taken 1947. Field check 1954-1955
Polyconic projection. 1927 North American datum
10,000-foot grid based on Mississippi coordinate system,
east zone

TRUE NORTH
MAGNETIC NORTH
APPROXIMATE MEAN
DECLINATION, 1955



SCALE 1:62500

CONTOUR INTERVAL 20 FEET
DATUM IS MEAN SEA LEVEL

USGS
Historical File
Topographic Division

ROAD CLASSIFICATION
Heavy-duty ——— Light-duty ———
Medium-duty ——— Unimproved dirt ———
U. S. Route ○ State Route ○



QUADRANGLE LOCATION

BLUE MOUNTAIN, MISS.
N 3430—W 8900/15

1955

JUN 11 1956

2588