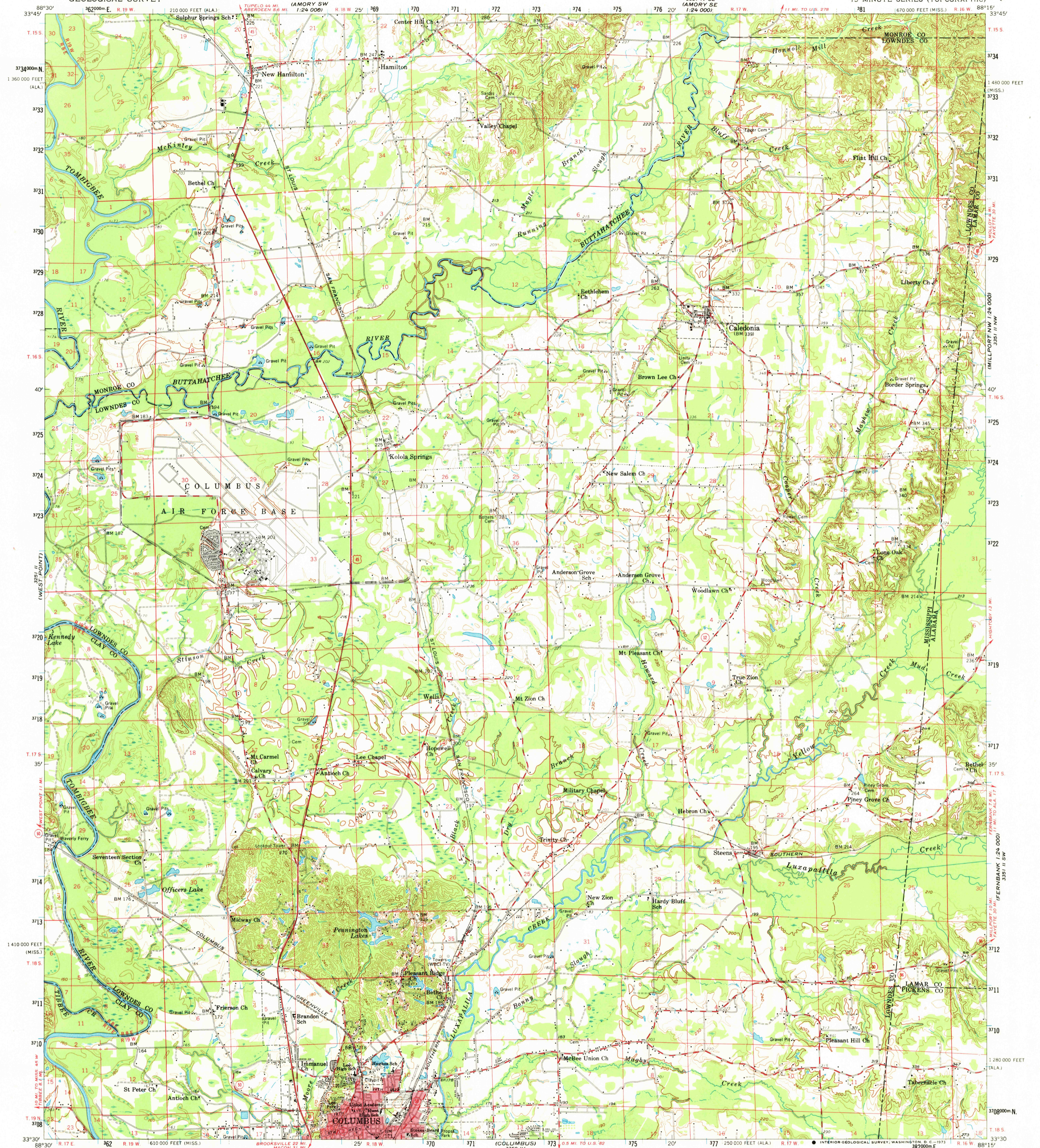


33° 15' N
88° 15' W
1:24,000

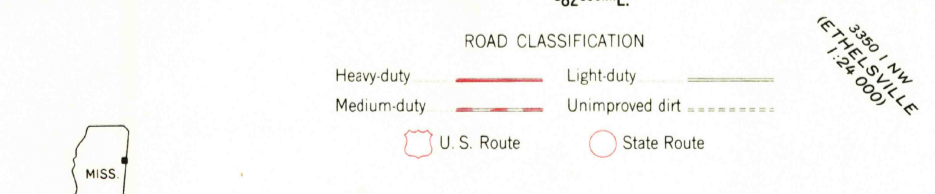
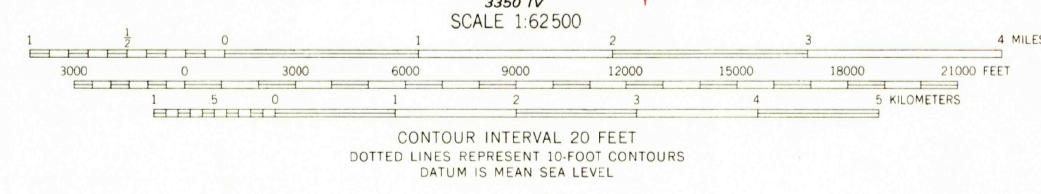
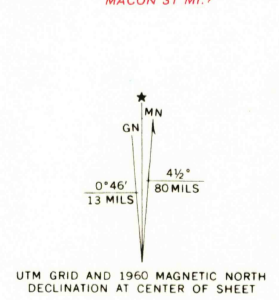
UNITED STATES
DEPARTMENT OF THE INTERIOR
GEOLOGICAL SURVEY

CALEDONIA QUADRANGLE
MISSISSIPPI-ALABAMA
15 MINUTE SERIES (TOPOGRAPHIC)

33° 15' N
88° 15' W
1:24,000



Mapped, edited, and published by the Geological Survey
Control by USGS, USC&GS, and USCE
Topography from aerial photographs by photogrammetric methods
Aerial photographs taken 1955. Field check 1960
Polyconic projection. 1927 North American datum
10,000-foot grids based on Mississippi coordinate system, east zone,
and Alabama coordinate system, west zone
1000-meter Universal Transverse Mercator grid ticks,
zone 16, shown in blue
Red tint indicates areas in which only
landmark buildings are shown



THIS MAP COMPLIES WITH NATIONAL MAP ACCURACY STANDARDS
FOR SALE BY U.S. GEOLOGICAL SURVEY, WASHINGTON, D. C. 20242
A FOLDER DESCRIBING TOPOGRAPHIC MAPS AND SYMBOLS IS AVAILABLE ON REQUEST

CALEDONIA, MISS.-ALA.
N 3330-W 8815/15
1960
AMS 3351 III-SERIES V743

MAY 16 1973
2490