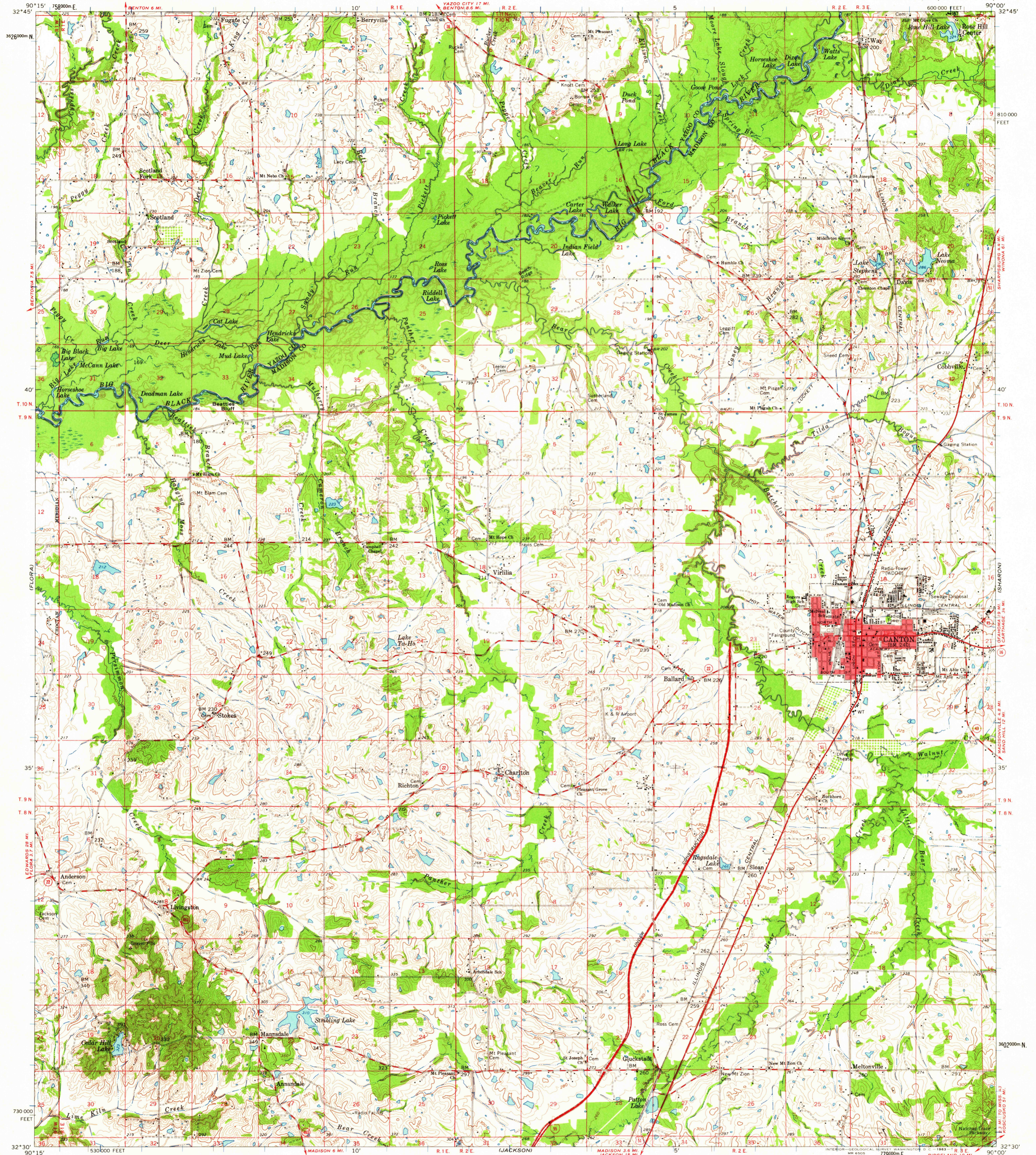


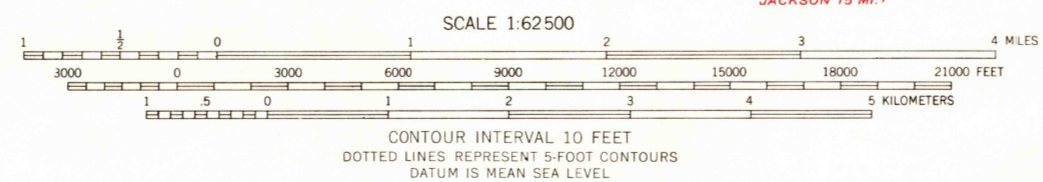
UNITED STATES
DEPARTMENT OF THE INTERIOR
GEOLOGICAL SURVEY

CANTON QUADRANGLE
MISSISSIPPI
15 MINUTE SERIES (TOPOGRAPHIC)



Mapped, edited, and published by the Geological Survey
Control by USGS and USC&GS
Topography by photogrammetric methods from aerial
photographs taken 1958. Field checked 1961
Polyconic projection. 1927 North American datum
10,000-foot grid based on Mississippi coordinate system, west zone
1000-meter Universal Transverse Mercator grid ticks,
zone 15, shown in blue
Red tint indicates areas in which only landmark buildings are shown
Blue hatching indicates area to be submerged by
Pearl River Valley Reservoir at elevation 296

TRUE NORTH
MAGNETIC NORTH
APPROXIMATE MEAN
DECLINATION, 1961



USGS
Historical File
Topographic Division

ROAD CLASSIFICATION
Heavy-duty ——— Light duty ———
Medium-duty ——— Unimproved dirt ———
○ Interstate Route □ U.S. Route ○ State Route

THIS MAP COMPLIES WITH NATIONAL MAP ACCURACY STANDARDS
FOR SALE BY U. S. GEOLOGICAL SURVEY, WASHINGTON 25, D. C.
A FOLDER DESCRIBING TOPOGRAPHIC MAPS AND SYMBOLS IS AVAILABLE ON REQUEST

U.S.G.S.
FILE COPY
TOPOGRAPHIC DIVISION

CANTON, MISS.
N3230—W9000/15
1961

JUL 11 1963
2200