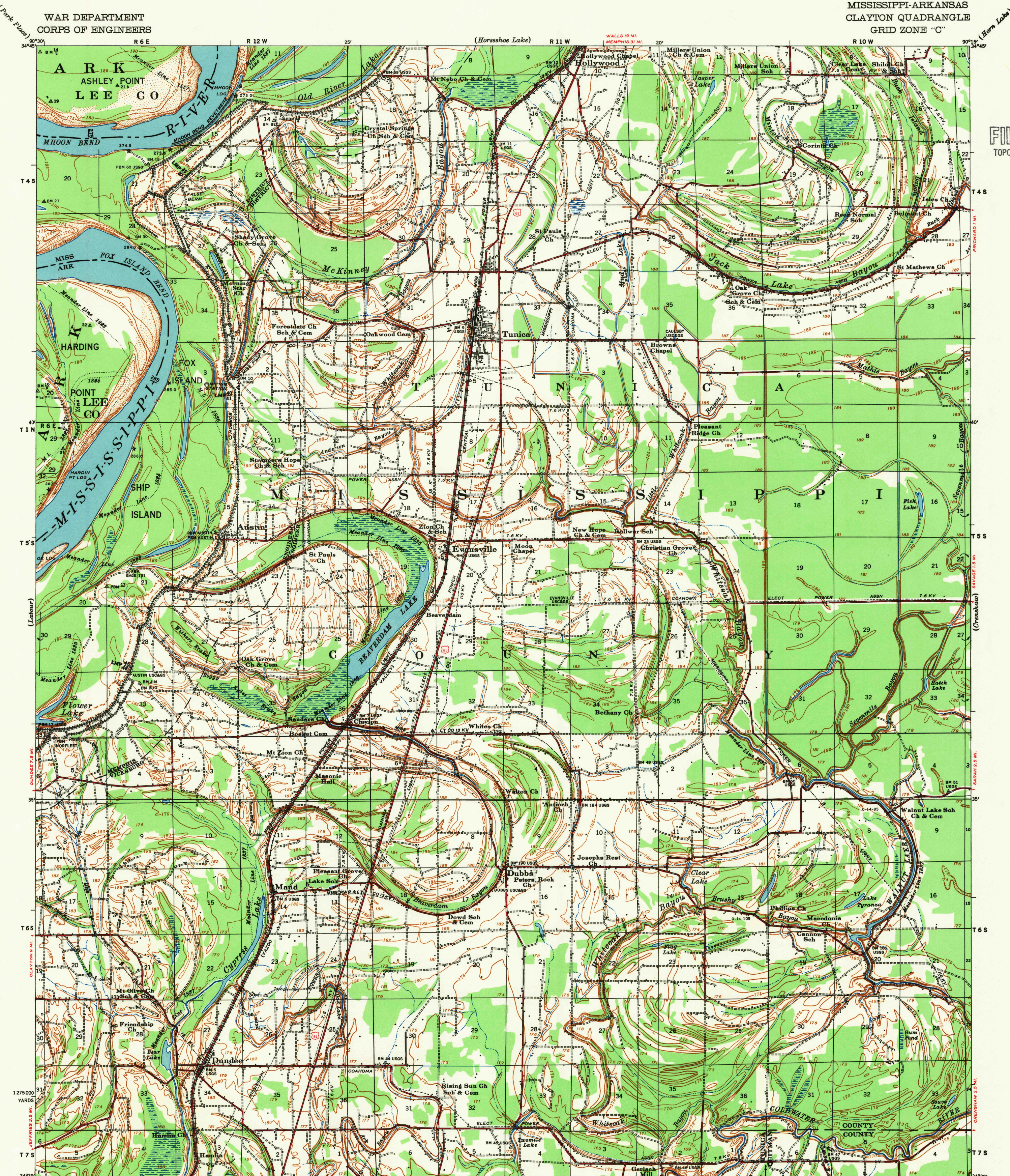


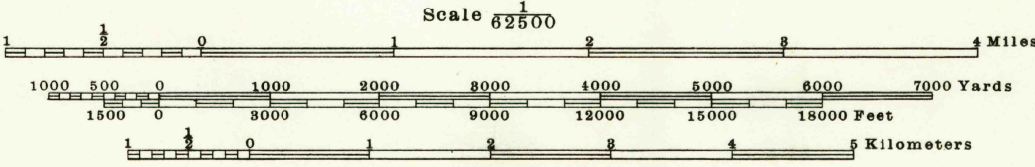
WAR DEPARTMENT
CORPS OF ENGINEERS

MISSISSIPPI-ARKANSAS
CLAYTON QUADRANGLE
GRID ZONE "C"

U.S.G.S.
FILE COPY
TOPOGRAPHIC DIVISION



Prepared under the direction of the President, Mississippi River Commission.
Horizontal control by Mississippi River Commission, Corps of Engineers,
U. S. Army, Memphis District and U. S. C. & G. S.
Vertical control by Mississippi River Commission, Corps of Engineers,
U. S. Army, Memphis District and U. S. C. & G. S.
Descriptions, elevations and geodetic positions of bench marks may be
obtained from Memphis Engineer District, Memphis, Tennessee.
Topography by Corps of Engineers, U. S. Army, Memphis District, 1929-1939
and U. S. C. & G. S., 1908.
Revised by Mississippi River Commission, 1932, 1935 and 1939.
Political boundaries are shown according to best available information
and are subject to change except where established by court decision.
Work under Flood Control Act shown as of December 1939.
Polyconic Projection, North American Datum.



Contour interval 5 feet
Datum is mean gulf level at Biloxi, Mississippi. Elevations differ from mean sea level elevations as determined
by the U. S. Coast and Geodetic Survey by small fractions of a foot. Persons interested may secure elevations of bench
marks as determined by the latest U. S. C. & G. S. adjustment, by applying to the U. S. Coast and Geodetic Survey.
FIVE THOUSAND YARD GRID COMPUTED FROM "GRID SYSTEM FOR PROGRESSIVE MAPS
IN THE U. S. C. & G. S. SPECIAL PUBLICATION NO. 59

Additional copies may be procured from
The President, Mississippi River Commission,
Vicksburg, Miss. 20 cents per copy

PRINTED BY ARMY MAP SERVICE, CORPS OF ENGINEERS, 9-54, 100890

LEGEND		
Levee	Retards and dikes	Revetment
River Gage	Levee mile post	Levee station
	Towhead	LMP
		TH

Distances below Cairo gage are shown at 5 mile intervals.
APPROXIMATE MEAN
DECLINATION 1935
ANNUAL MAGNETIC CHANGE 2'
INCREASE

USCS
Historical File
Topographic Division

CLAYTON, MISS.-ARK.
EDITION OF 1939
N3430-W9015/15
Printed for G.S. by A.M.S.
OCT 20 1954

U.S.G.S.
FILE COPY
TOPOGRAPHIC DIVISION