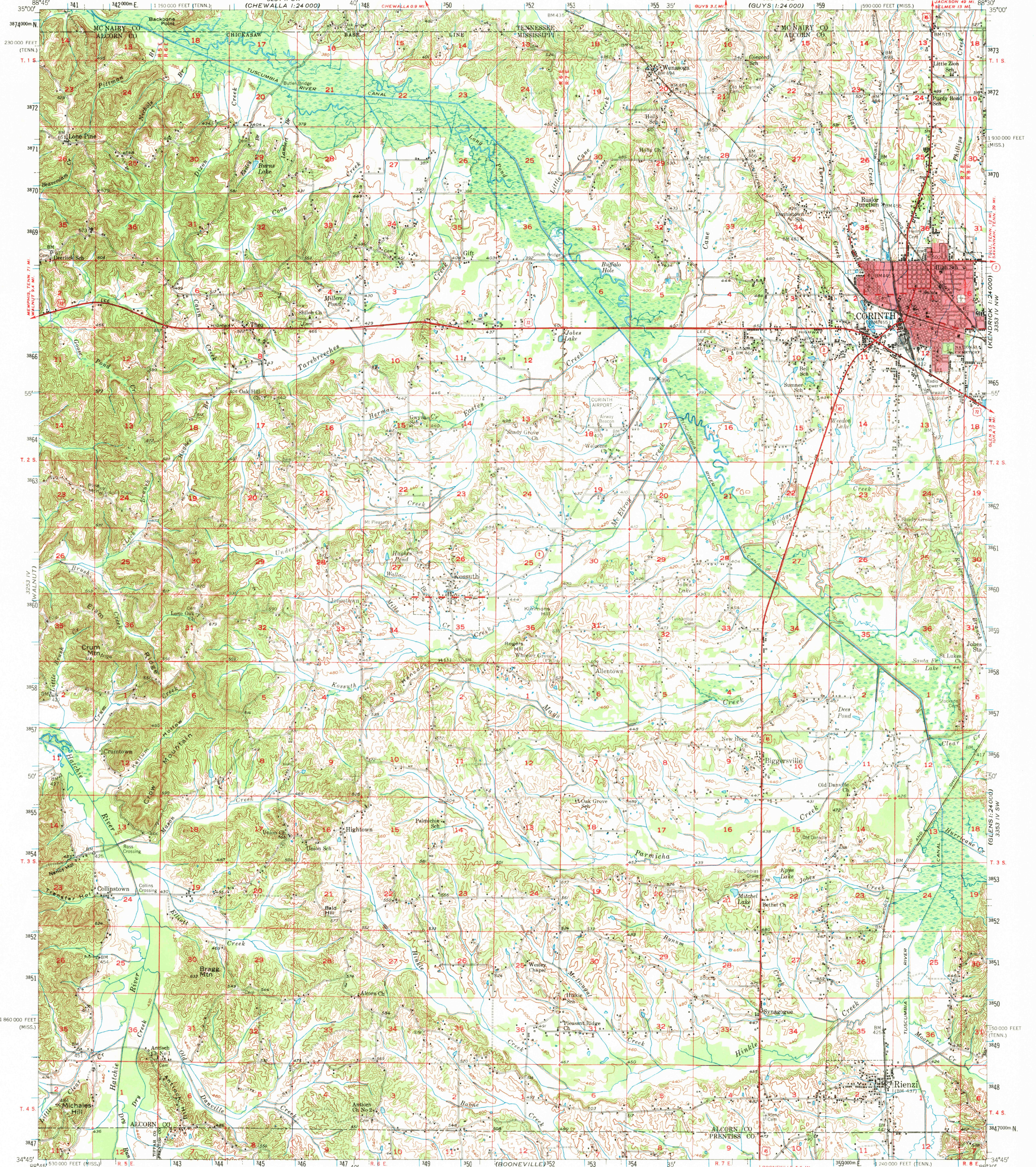


UNITED STATES  
DEPARTMENT OF THE INTERIOR  
GEOLOGICAL SURVEY

CORINTH QUADRANGLE  
MISSISSIPPI-TENNESSEE  
15 MINUTE SERIES (TOPOGRAPHIC)



3254 II SE (CHEWALLA 1:24 000)

Control by USGS, USC&GS, and TVA

Topography from aerial photographs by Kelsh plotter

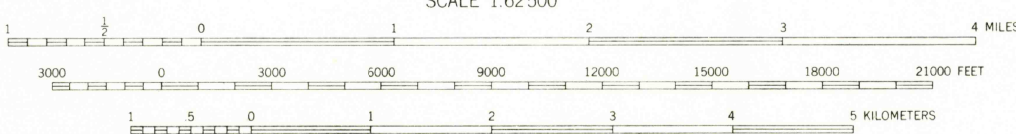
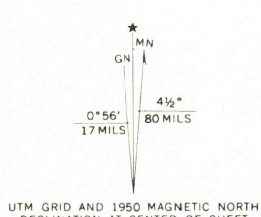
Aerial photographs taken 1947. Field check 1950

Polycyclic projection. 1927 North American datum

10,000-foot grids based on Mississippi coordinate system, east zone, and Tennessee coordinate system

Red tint indicates area in which only landmark buildings are shown

1000-meter Universal Transverse Mercator grid ticks, zone 16, shown in blue



CONTOUR INTERVAL 20 FEET  
DOTTED LINES REPRESENT HALF-INTERVAL CONTOURS  
DATUM IS MEAN SEA LEVEL

THIS MAP COMPLIES WITH NATIONAL MAP ACCURACY STANDARDS  
FOR SALE BY U. S. GEOLOGICAL SURVEY, WASHINGTON, D. C. 20242,  
AND TENNESSEE DIVISION OF GEOLOGY, NASHVILLE, TENNESSEE 37219  
A FOLDER DESCRIBING TOPOGRAPHIC MAPS AND SYMBOLS IS AVAILABLE ON REQUEST

USGS  
Historical File  
Topographic Division

U.S.G.S.  
FILE COPY  
TOPOGRAPHIC DIVISION

ROAD CLASSIFICATION  
Heavy-duty ——— LANE 16 LANE Light-duty ———  
Medium-duty ——— LANE 16 LANE Unimproved dirt ———  
U. S. Route ——— State Route ———

CORINTH, MISS.-TENN.

N3445-W8830/15

1950

AMS 3253 I-SERIES V743

1635  
OCT 1 1969

3253 IV (WALNUT)

3253 III (RIPLEY)

3253 II (BOONEVILLE)

3253 I (ALCOHOL)

3253 IV SW (GLENS)

3253 IV SE (TUPELO)

3253 III SW (ALBUQUERQUE)

3253 III SE (ALBUQUERQUE)

3253 II SW (ALBUQUERQUE)

3253 II SE (ALBUQUERQUE)