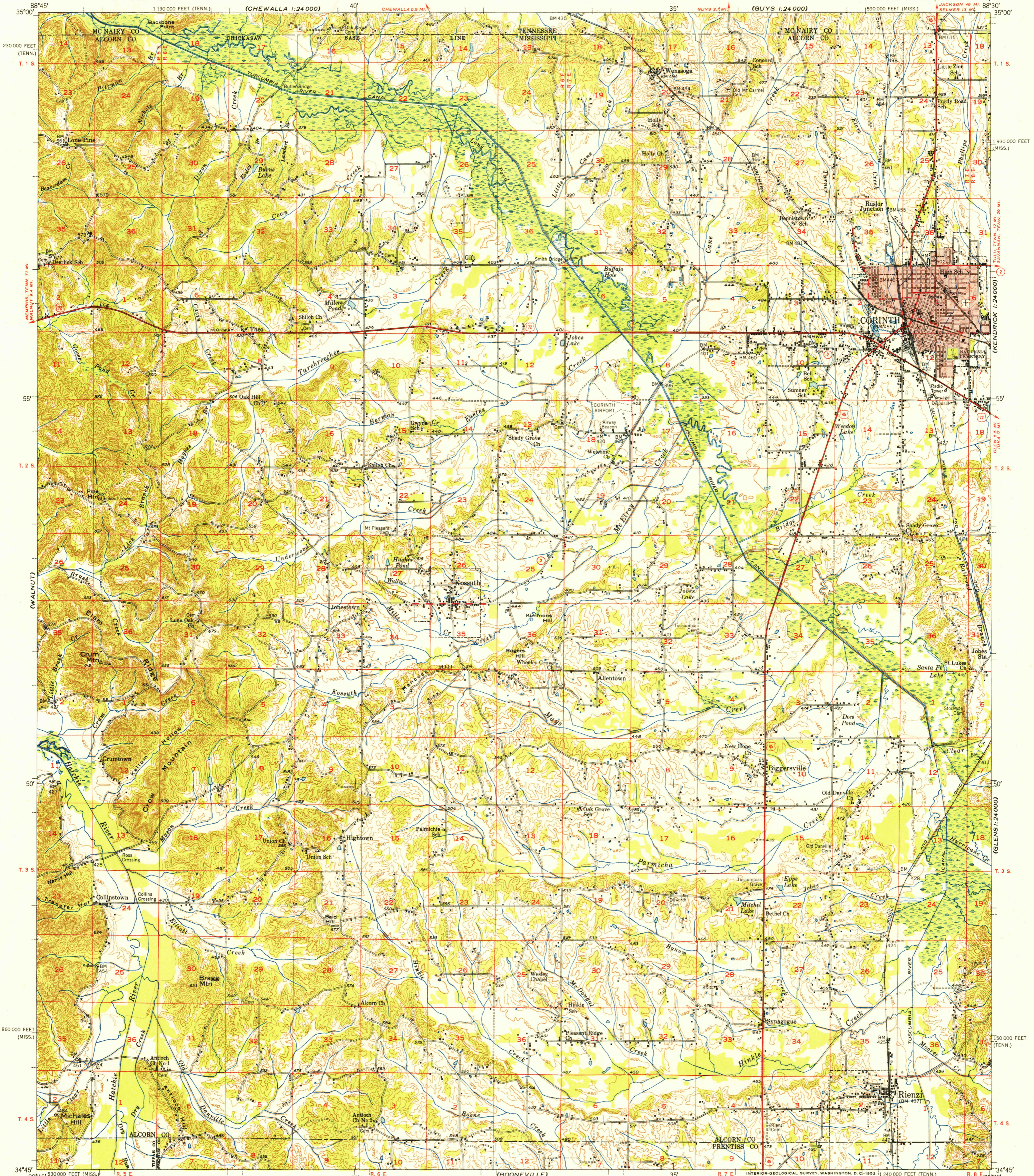


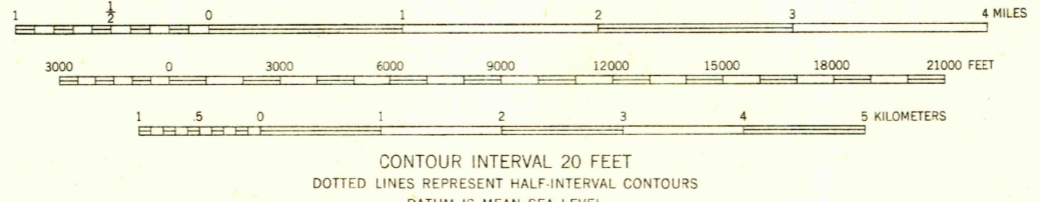
UNITED STATES
DEPARTMENT OF THE INTERIOR
GEOLOGICAL SURVEY

CORINTH QUADRANGLE
MISSISSIPPI-TENNESSEE
15 MINUTE SERIES (TOPOGRAPHIC)



Mapped, edited, and published by the Geological Survey
Control by USGS, USC&GS, and TVA
Topography from aerial photographs by Kelsch plotters
Aerial photographs taken 1947. Field check 1950
Polyconic projection. 1927 North American datum
10,000-foot grids based on Mississippi coordinate system,
east zone, and Tennessee coordinate system
Red tint indicates area in which only
landmark buildings are shown

TRUE NORTH
MAGNETIC NORTH
APPROXIMATE MEAN
DECLINATION, 1950



CONTOUR INTERVAL 20 FEET
DOTTED LINES REPRESENT HALF-INTERVAL CONTOURS
DATUM IS MEAN SEA LEVEL

USGS
Historical File
Topographic Division

ROAD CLASSIFICATION
Heavy-duty ———— LANE & LANE Light duty ————
Medium-duty ———— LANE & LANE Unimproved dirt - - - - -
U. S. Route (U) State Route (S)

U. S. G. S.
FILE COPY
Inspection and Rating

CORINTH, MISS.-TENN.
N3445-W8830/15
1950

THIS MAP COMPLIES WITH NATIONAL MAP ACCURACY STANDARDS
FOR SALE BY U. S. GEOLOGICAL SURVEY, WASHINGTON 25, D. C.
AND TENNESSEE DIVISION OF GEOLOGY, NASHVILLE, TENN.
A FOLDER DESCRIBING TOPOGRAPHIC MAPS AND SYMBOLS IS AVAILABLE ON REQUEST

JUN 11 1952 2130