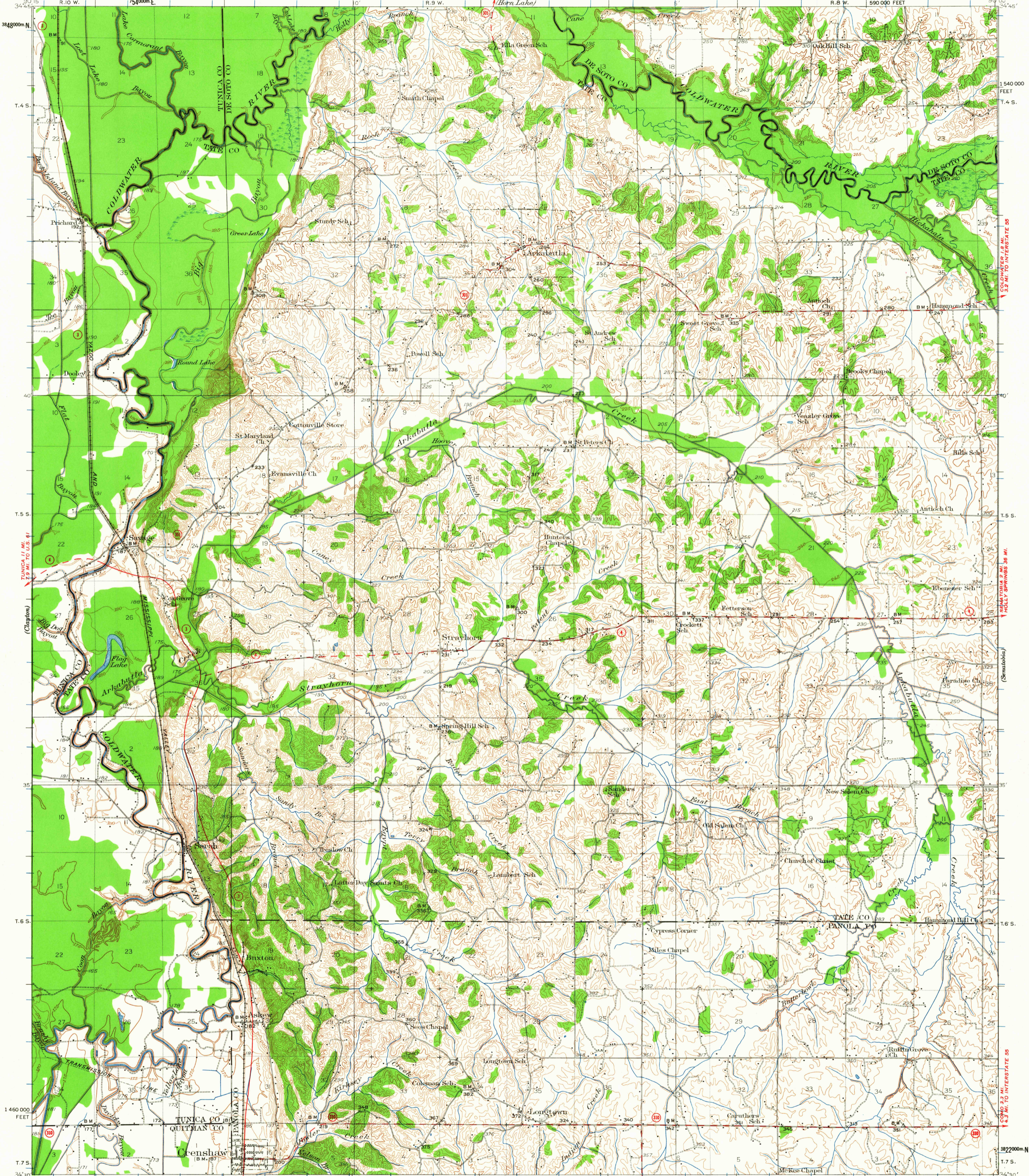


UNITED STATES
DEPARTMENT OF THE INTERIOR
GEOLOGICAL SURVEY

UNITED STATES
DEPARTMENT OF THE ARMY
CORPS OF ENGINEERS

MISSISSIPPI
CRENSHAW QUADRANGLE



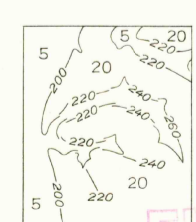
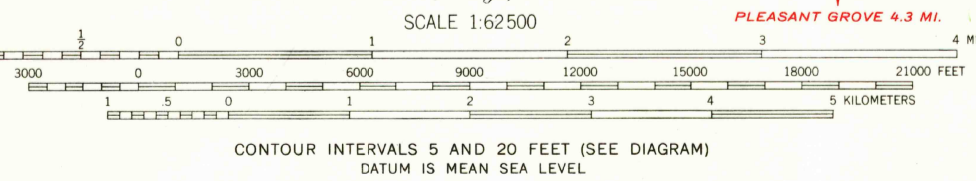
Topography by J.I. Gayetty, Olinus Smith, H.B. Smith, H.S. Miler, S.L. Parker, C.S. Wells, A.G. England, J.G. Groninger, J.A. Law, G.A. Mock, and Elmer Elshire. Culture and drainage in part compiled from aerial photographs taken by Air Corps, U.S. Army. Control by U.S. Geological Survey and Corps of Engineers, U.S. Army. Surveyed in 1931-1932.

ROAD CLASSIFICATION
1964

Heavy-duty	Light-duty
Medium-duty	Unimproved dirt

State Route

APPROXIMATE MEAN DECLINATION 1932



Projection: Polyconic projection. 1927 North American datum. 10000-foot grid based on Mississippi (West) rectangular coordinate system. 1000-meter Universal Transverse Mercator grid ticks, zone 15, shown in blue.

USGS
USCS
Historical File
Topographic Division

CRENSHAW, MISS.
N3430-W9000/15

1932

FOR SALE BY U. S. GEOLOGICAL SURVEY, WASHINGTON 25, D. C.
A FOLDER DESCRIBING TOPOGRAPHIC MAPS AND SYMBOLS IS AVAILABLE ON REQUEST

1235