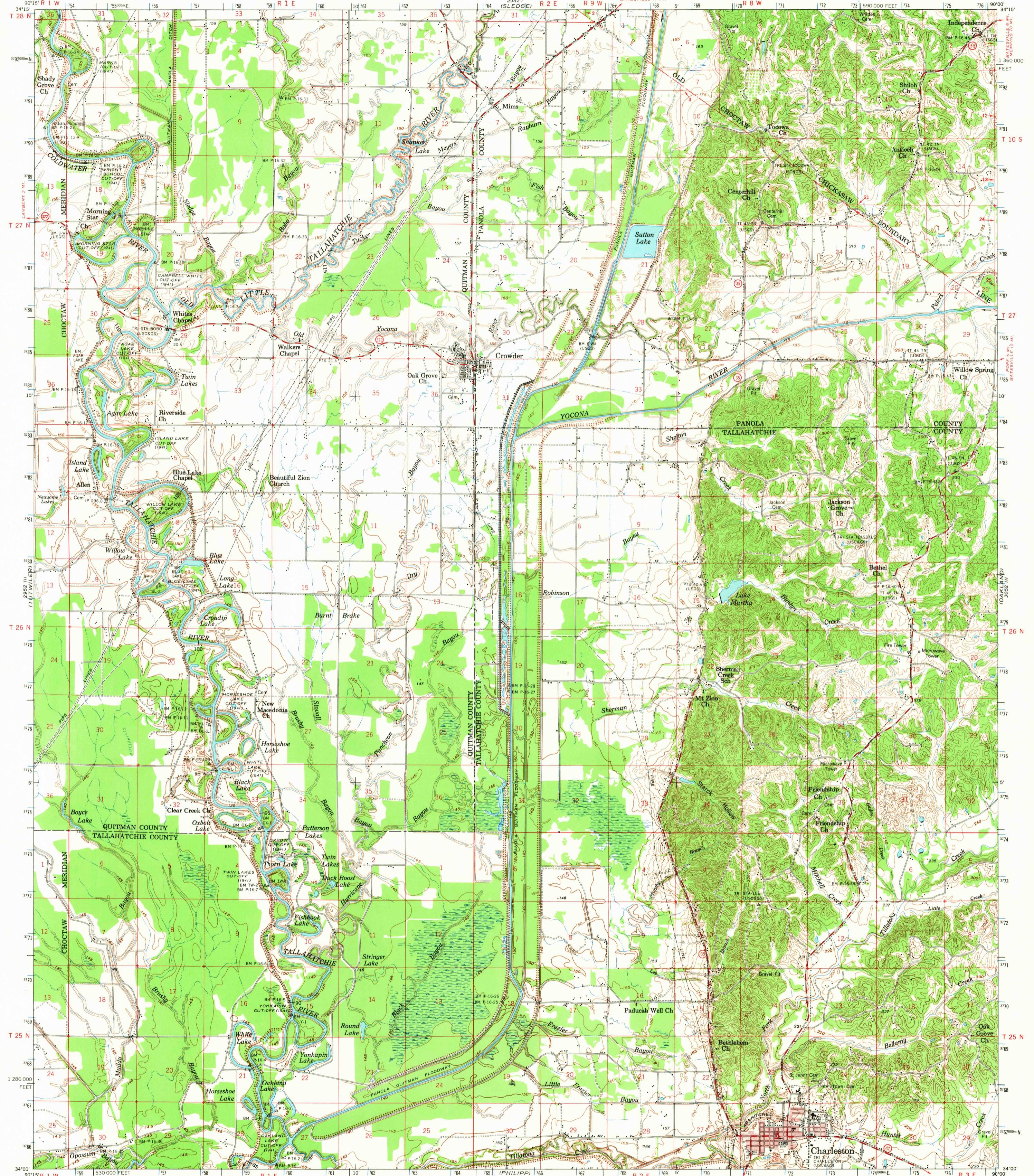


2952 IV (MARKS)

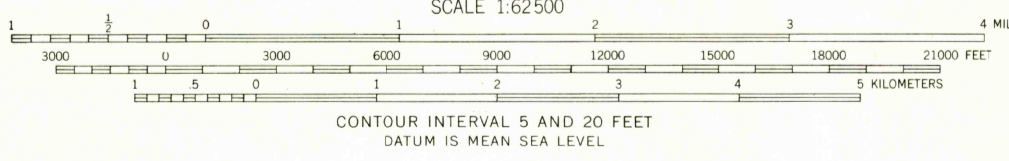
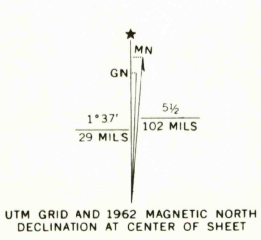
UNITED STATES  
DEPARTMENT OF THE INTERIOR  
GEOLOGICAL SURVEY

CROWDER QUADRANGLE  
MISSISSIPPI  
15 MINUTE SERIES (TOPOGRAPHIC)

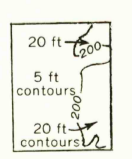
2952 IV (MARKS)



Mapped and edited by the Mississippi River Commission  
Published by the Geological Survey  
Control by USGS, USCGS, USCE, and MRC  
Topography by photogrammetric methods from  
aerial photographs taken 1961. Field checked 1962  
Polyconic projection. 1927 North American datum  
10,000-foot grid based on Mississippi coordinate  
system, west zone  
1000-meter Universal Transverse Mercator grid ticks,  
zone 15, shown in blue  
Red tint indicates areas in which only landmark  
buildings are shown



Historical File  
Topographic Division  
ROAD CLASSIFICATION  
Medium-duty Improved dirt  
Light-duty  
U.S.G.S. State Route



FILE COPY  
TOPOGRAPHIC DIVISION  
CROWDER, MISS.  
N3400-W9000/15  
1962

SEP 2 1965

FOR SALE BY U. S. GEOLOGICAL SURVEY, WASHINGTON, D. C. 20242  
AND MISSISSIPPI RIVER COMMISSION, VICKSBURG, MISSISSIPPI  
A FOLDER DESCRIBING TOPOGRAPHIC MAPS AND SYMBOLS IS AVAILABLE ON REQUEST

AMS 2952 II-SERIES V743