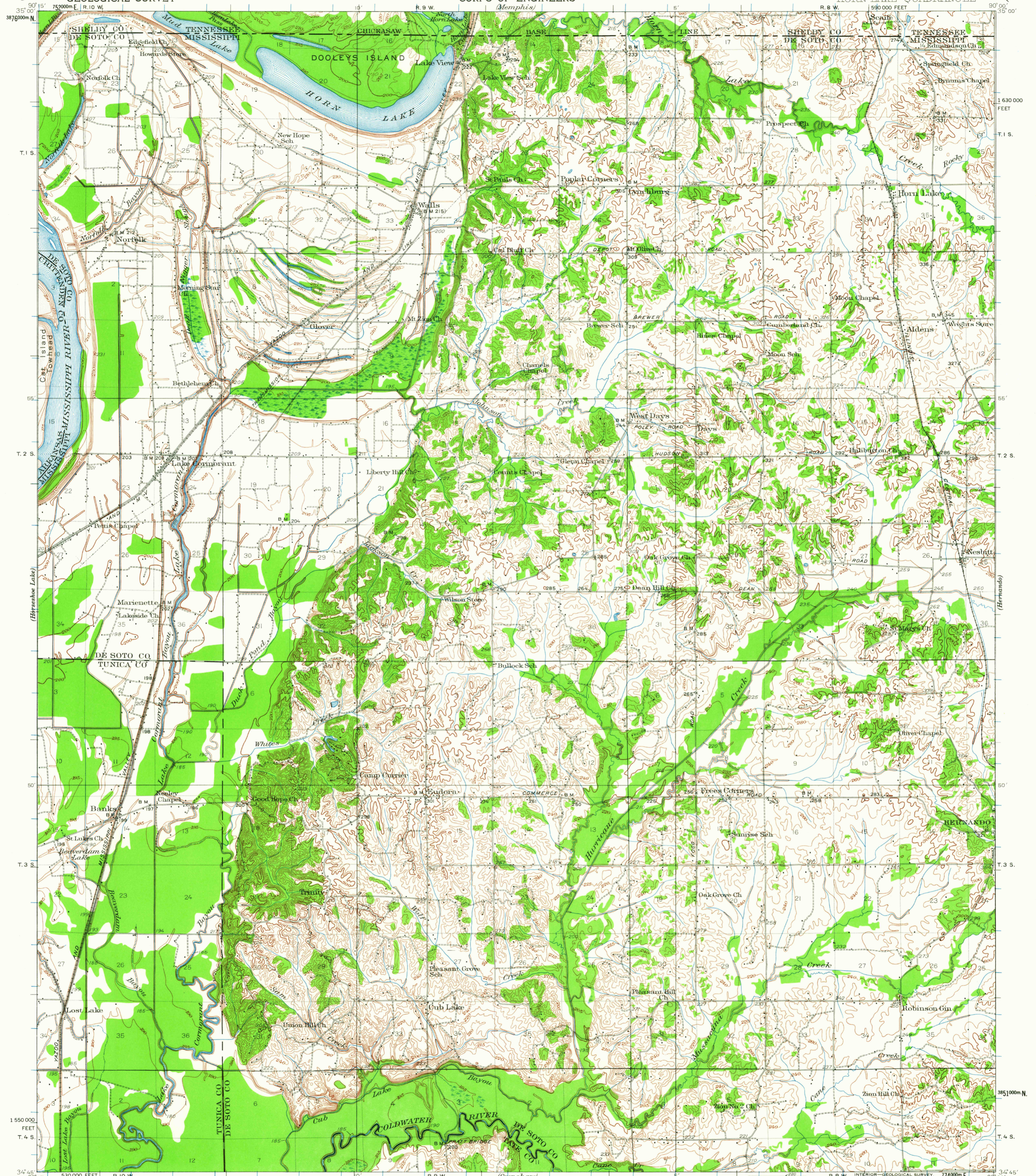


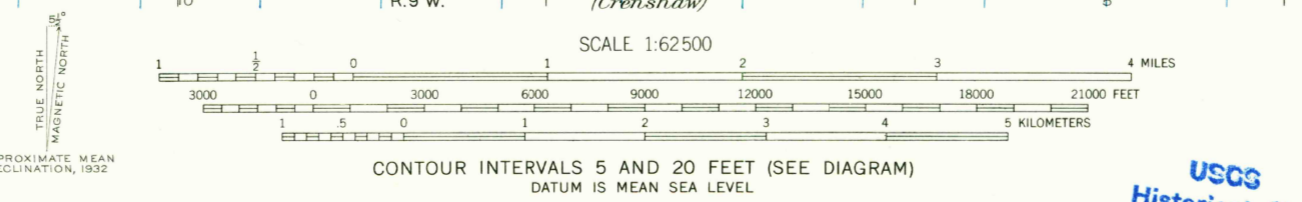
UNITED STATES
DEPARTMENT OF THE INTERIOR
GEOLOGICAL SURVEY

UNITED STATES
DEPARTMENT OF THE ARMY
CORPS OF ENGINEERS

MISSISSIPPI-TENNESSEE-ARKANSAS
HORN LAKE QUADRANGLE



Topography by R. L. Harrison, Olinus Smith, R. H. Reineck, J. H. Wilke, J. O. Kilmartin, W. H. S. Morey, C. S. Wells, J. B. Leachman, and Bayard Knock. Culture and drainage in part compiled from aerial photographs taken by Air Corps, U.S. Army Control by U.S. Geological Survey and U.S. Coast and Geodetic Survey Surveyed in 1908 and 1931-1932.



INTERIOR-GEOLOGICAL SURVEY, WASHINGTON, D. C.—1964
Polyconic projection. 1927 North American datum
10,000-foot grid based on Mississippi (West)
rectangular coordinate system
1000-meter Universal Transverse Mercator grid ticks,
zone 15, shown in blue

HORN LAKE, MISS.—TENN.—ARK.
N3445—W9000/15

AUG 18 1964

FOR SALE BY U. S. GEOLOGICAL SURVEY, WASHINGTON 25, D. C.
A FOLDER DESCRIBING TOPOGRAPHIC MAPS AND SYMBOLS IS AVAILABLE ON REQUEST

USGS
Historical File
Topographic Division

1135