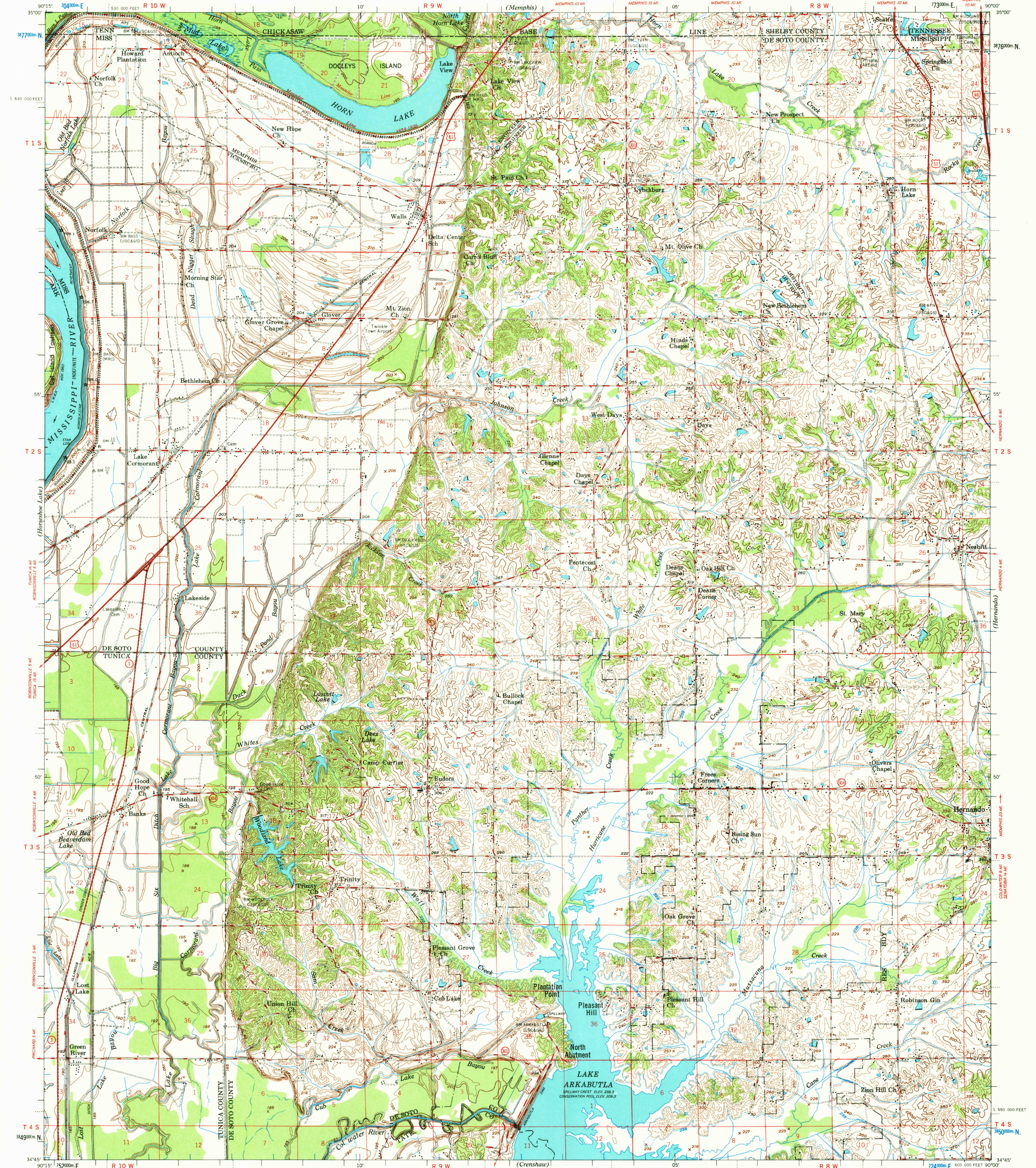


(Edmondson)

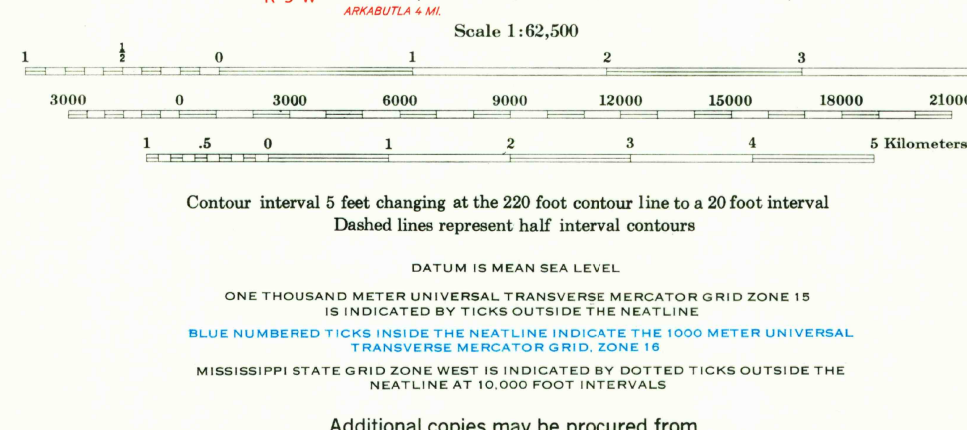
U. S. ARMY
CORPS OF ENGINEERS

HORN LAKE QUADRANGLE
MISSISSIPPI-TENNESSEE-ARKANSAS

(Barfield)



Prepared under the direction of the President, Mississippi River Commission by the U. S. Army Engineer District, Memphis, Corps of Engineers.
 Edited and published by Mississippi River Commission, Corps of Engineers, U. S. Army, Vicksburg, Mississippi.
 Control by the U. S. Army Engineer District, Memphis, Corps of Engineers, U. S. Coast & Geodetic Survey and U. S. Geological Survey.
 Polyconic Projection, 1927 North American Datum
 Descriptions, elevations and geodetic positions of permanent survey marks may be obtained from the U. S. Army Engineer District, Memphis, Corps of Engineers, Memphis, Tennessee.
 Topography from aerial photographs by Balplex plotter and by plane table surveys 1931-39, 1950.
 Aerial photographs taken 1958. Field checked 1960.
 Political boundaries are shown according to best available information.
 Work under Flood Control Act shown as of June 1959.
 This map complies with National Map accuracy standards.



GRID DECLINATION FOR CENTER OF SHEET FOR THE UNIVERSAL TRANSVERSE MERCATOR GRID ZONE 18 7° 08' 32" WEST

APPROXIMATE MEAN DECLINATION 1960 FOR CENTER OF SHEET ANNUAL MAGNETIC CHANGE 3" WESTERLY

LEGEND

Levee	Levee Mile Post	LMP
Secondary Levee	Levee Station	LS
Retard and Dikes	Towhead	TH
Revetment		

ROAD DATA 1960

In developed areas, only through roads are classified

Hard surface, heavy duty	4 LANE 16' 14.00'
Hard surface, medium duty	2 LANE 12' 14.00'
Loose surface, graded and drained, or narrow hard surface road	---
Improved dirt road or street	---
Unimproved dirt road; trail	---
Interstate Route	Ⓜ
U. S. Route	Ⓜ
State Route	Ⓜ

Additional copies may be procured from
 U. S. Army Engineer District, Vicksburg, Corps of Engineers
 Vicksburg, Miss. 75 cents per copy
 or
 U. S. Army Engineer District, Memphis, Corps of Engineers
 Memphis, Tennessee

PRINTED BY ARMY—M. R. C. VICKSBURG, MISS. 10-61 1099

HORN LAKE, MISS.-TENN.-ARK.
 REPRINTED 1978
 EDITION OF 1961
 N3445-99000/15

RETURN TO:
USGS NMD HISTORICAL MAP ARCHIVES

(Clawson)

(Sennott)