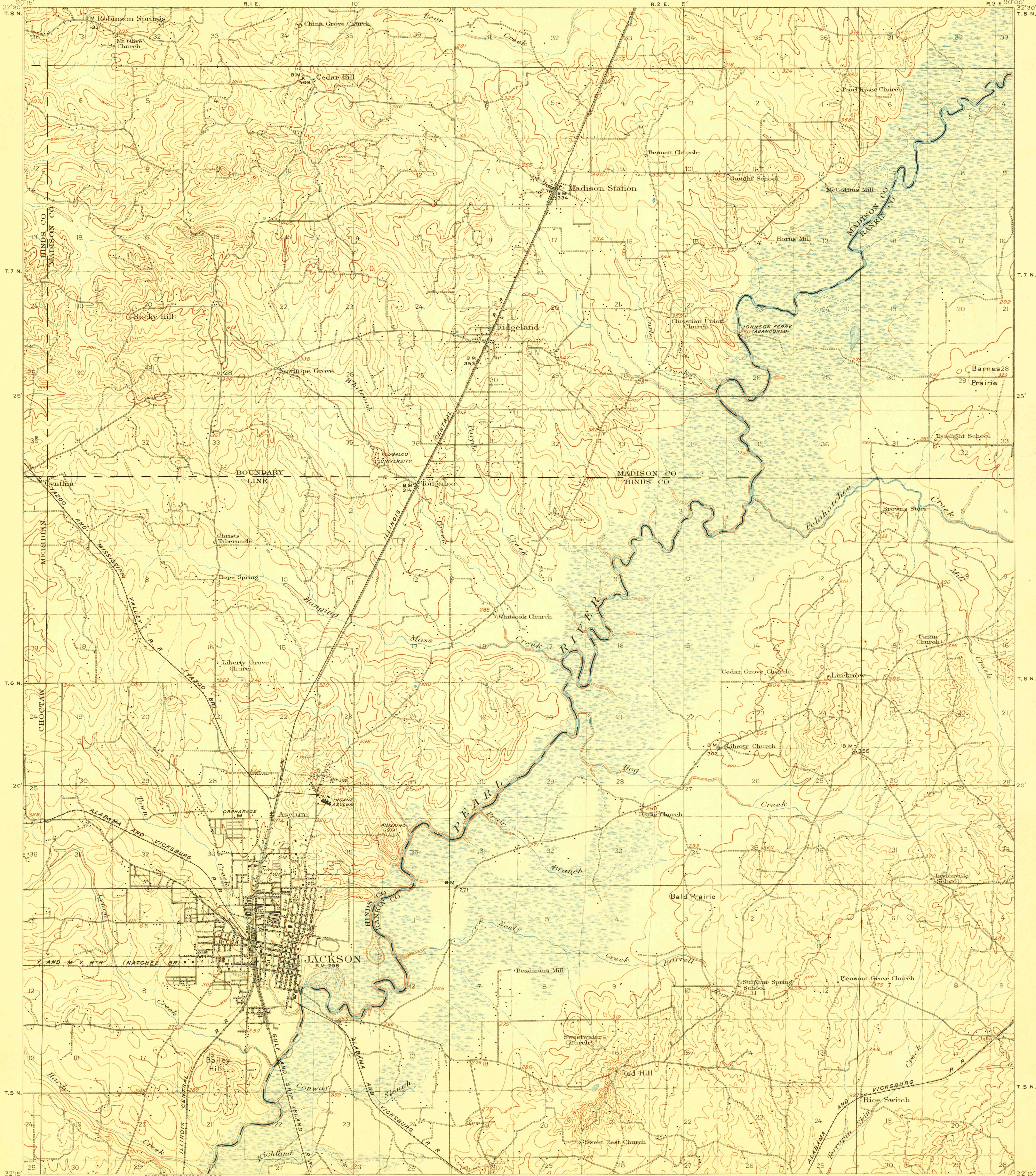


TOPOGRAPHY

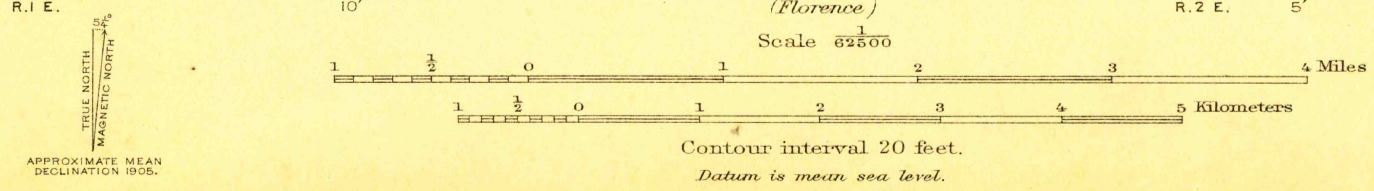
STATE OF MISSISSIPPI
MISSISSIPPI EXPERIMENT STATION

MISSISSIPPI
JACKSON QUADRANGLE

U.S. GEOLOGICAL SURVEY
GEORGE OTIS SMITH, DIRECTOR



Engraved June 1908 by U.S.G.S.
J. H. Renshawe and H. M. Wilson, Geographers.
H. B. Blair, in charge of section.
Topography by Merrill Hackett, T. Foster Slaughter,
and J. G. Staack.
Control by J. R. Ellis and C. B. Kendall.
Surveyed in 1901-1903 and 1905.



U.S.G.S. Historical File Topographic Division
Ed. Div. Topographic Map Historical File Topographic Division

Scale 62500
Miles 0 1 2 3 4
Kilometers 0 1 2 3 4 5

Contour interval 20 feet.
Datum is mean sea level.

U.S.G.S. Edition of Aug. 1908.
OCT 31 1908 3597
JACKSON MISS.